



The Houston Regional HIV/AIDS Resource Group, Inc.

Eastern Texas HIV Administrative Service Area
Ryan White Part B, C, D, State Services, HOPWA

Houston Ryan White Planning Council

How to Best Meet The Need Process 2020

What does that mean?

DSHS/TRG Jargon

- AA Administrative Agency
- DSHS Department of State Health Services
- HASA HIV Administrative Service Area
- HRSA Health Services and Resources Administration
- HSDA Health Service Delivery Area
- INP Internal Needs Panel
- P&A Priorities and Allocations
- RW Ryan White
- RWPC Ryan White Planning Council
- SOC Standards of Care
- TRG The Resource Group, Inc.
- PLWH People Living with HIV

TRG



- The Resource Group, Inc. is the largest and only community based HIV/AIDS agency in the State of Texas founded as a 501(c)(3) non-profit agency in 1993 to serve as the community based administrative agency for collaborative HIV/AIDS services funding in Northeast, East and Southeast Texas.
- We have grown from an initial funding of \$2,500,000 to our current funding level of over \$10,000,000. We currently fund over 15 agencies in Northeast, East and Southeast Texas to provide over 80 different services through 5 state and federal grants.
- The Resource Group serves as the administrative agency for the Ryan White Part B grant, the Department of State and Health Services (DSHS) State Services grant and the HOPWA grant in a 51 county region. We also administer the Ryan White Part D grants for Houston & Galveston and the Ryan White Part C grant for 27 rural counties of Eastern Texas.

Ryan White Act

- First enacted by Congress in 1990, The Ryan White CARE Act was reauthorized in 1996 and again in 2000. In 2006, Ryan White Treatment Modernization Act. The last reauthorization was in 2009 as the Ryan White Treatment Extensions Act. Learn more: <https://hab.hrsa.gov/about-ryan-white-hiv-aids-program/about-ryan-white-hiv-aids-program>
- National HIV/AIDS Strategy
 - The National HIV/AIDS Strategy is a five-year plan that details principles, priorities, and actions to guide the national response to the HIV epidemic. First released on July 13, 2010, the Strategy identified a set of priorities and strategic action steps tied to measurable outcomes for moving the nation forward in addressing the domestic HIV epidemic. In July 2015, the [National HIV/AIDS Strategy for the United States: Updated to 2020](#) (NHAS 2020) (PDF - 2.2 MB) was updated. NHAS 2020 reflects the work accomplished and the new scientific developments since 2010 and charts a course for collective action across the federal government and all sectors of society to move us close to the Strategy's vision.



Ryan White Act: Purpose

- To help communities and States increase availability of primary health care and support services that enhance access to care for persons living with HIV (PLWH) who fall through the public safety net.
- Reduce use of more costly inpatient care.
- Increase access to care for underserved populations.
- Improve quality of life for those affected by the epidemic.
- The Ryan White Act works towards these goals by funding local and State programs that provide primary medical care and support services; healthcare provider training; and technical assistance to help funded programs address implementation and emerging HIV care issues.

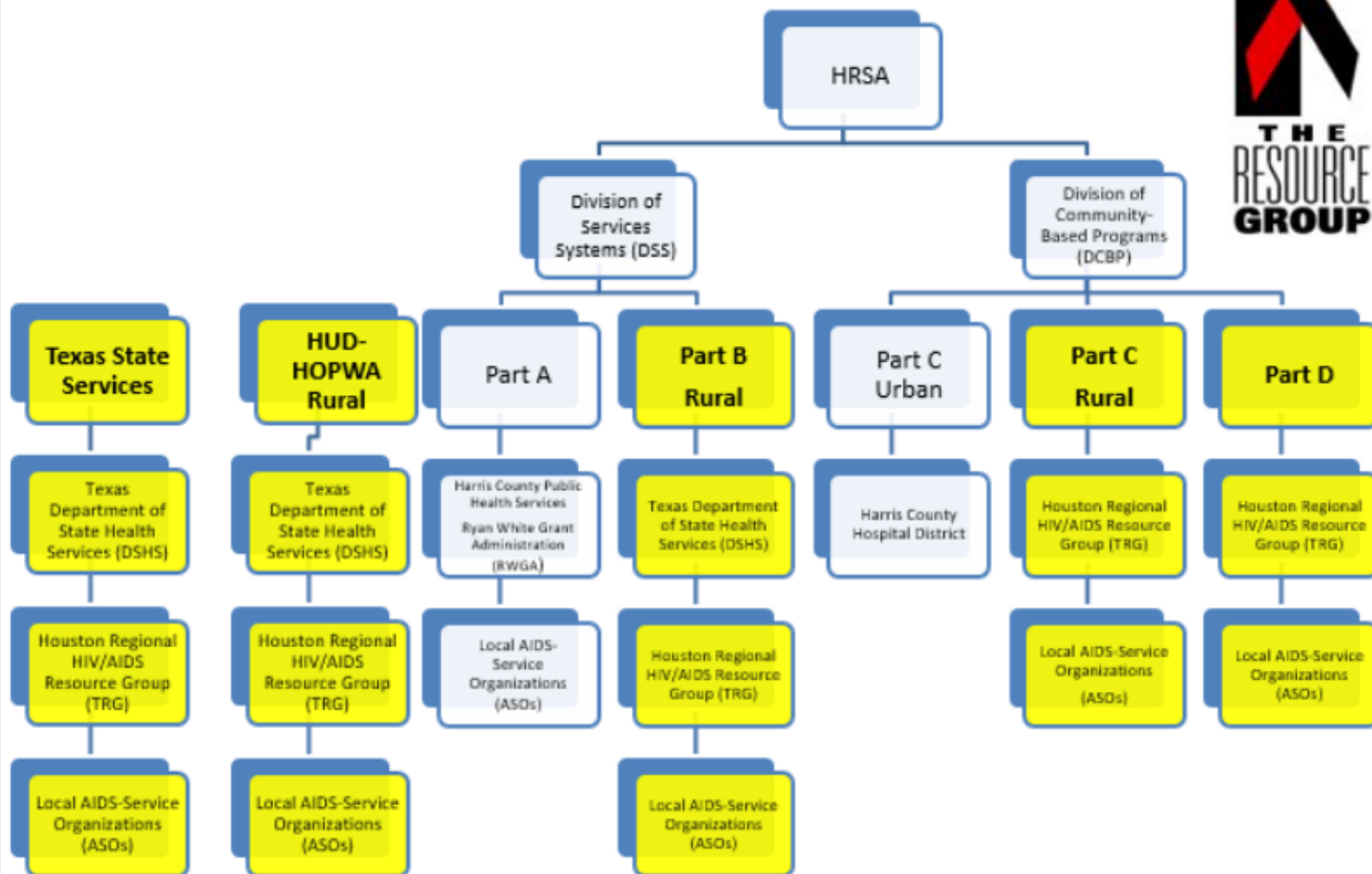
Structure of HIV Care Funding

U.S. Department of
Health & Human
Services (DHHS)



Health Resources & Services
Administration (HRSA)
HIV/AIDS Bureau (HAB)

Structure of HIV Care Services



Funding Service Categories

1. Outpatient Ambulatory Health Services
2. Local AIDS Pharmaceutical Assistance
3. Early Intervention Services
4. Health Insurance Premiums and Cost-Sharing Assistance
5. Home and Community-Based Health Services
6. Home Health Care
7. Hospice Services
8. Medical Case Management
9. Medical Nutritional Therapy
10. Mental Health Services
11. Oral Health Care
12. Substance Abuse Services Outpatient

1. Non-Medical Case Management
2. Child Care Services
3. Emergency Financial Assistance (EFA)
4. Food Bank Services
5. Health Education/Risk Reduction
6. Housing Services
7. Legal Services
8. Linguistics Services
9. Medical Transportation Services
10. Outreach Services
11. Psychological Support Services
12. Referral for Health Care and Supportive Services
13. Rehabilitation Services
14. Respite Care
15. Substance Abuse Services (Residential)
16. Other Professional Services
17. Treatment Adherence Counseling (Non-Medical)

■ Core Medical Services

■ Supportive Services

Ryan White Part B

&

DSHS State Services

Funding Overview

Part B:

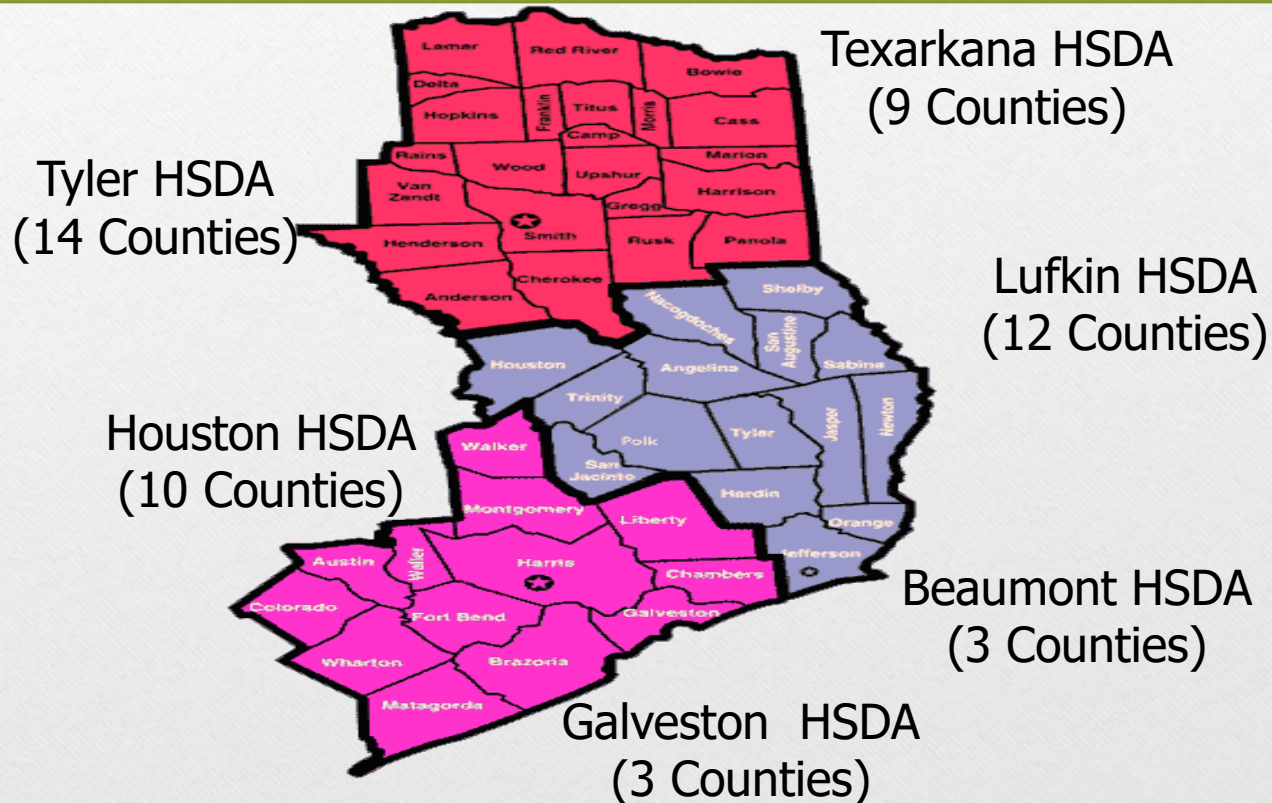
Grants to States and Territories

- Grants to all 50 States, District of Columbia, Puerto Rico, Guam, the U.S. Virgin Islands and 5 U.S. Pacific Territories or Associated Jurisdictions.
- Grants Include: Base Grant, AIDS Drug Assistance Program (ADAP), ADAP supplemental grants and grants to Emerging Communities (those reporting between 500-999 cumulative reported AIDS cases over the most 5 years....i.e. RURAL AREAS!

What the heck is State Services?

- DSHS State Services funding is Texas' allocations of funding for HIV Services.
- Though not directly bound by the rules of the Ryan White HIV/AIDS Treatment Extension Act, DSHS keeps State Services consistent with Ryan White whenever possible.
- State Services are Supportive HIV Services
- State Services-Rebate is funding generated from 340B rebate the State of Texas.

DSHS HIV Service Delivery Area for Eastern Texas 51-County Service Area



Houston HIV Service Delivery Area

- The Houston HSDA is a 10-county service area including the counties of the Houston EMA.
- DSHS allocates funds by HSDA.



Houston HSDA Funded Services

- RWB

- Home & Community Based Health Services
- Oral Health Care-Prosthodontics
- Oral Health-General
- Health Insurance Assistance

- SS

- Hospice
- Early Intervention Services-Incarcerated
- Health Insurance Assistance
- Mental Health

- SS-R

- ADAP Enrollment Worker
- Health Insurance Assistance

- RWD

- Case Management-Transition
- Health Education Risk Reduction
- Medical (Health) Case Management
- Medical Transportation
- Non-Medical Case Management (Patient Navigation, Recruitment & Retention Specialist)
- Outpatient Ambulatory Health Services
- HOPWA
- Tenant Based Rental Assistance
- Housing Case Management

FUNDAMENTAL DIFFERENCE

Part A

- Guidance for Part A comes directly to the Recipient from the HRSA Division of Service Systems

Part B

- Guidance for Part B comes directly to DSHS from the HRSA Division of Service Systems
- Guidance for State Services comes to TRG from the DSHS.

THE END RESULT

- Part A and Part B rules, requirements, and guidance may not always match.
- The Recipient and AA staff guidance in the RWPC processes may vary accordingly.
- Whenever possible, uniformity is desired. But uniformity may not always be able to be achieved.

The Part B “Process”

- The Planning Council will use its processes to make “recommendations” to The Resource Group regarding service categories, standards of care, outcome measures and priorities and allocations.
- The Resource Group will forward those “recommendations” and any concerns to DSHS.
- DSHS has final approval.
- Note: This does not exclude The Resource Group from making programmatic alterations to maintain consistency with DSHS policies or guidance.

State Services Procurement Report

The Houston Regional HIV/AIDS Resource Group, Inc.
 FY 1819 DSHS State Services
 Procurement Report
 September 1, 2018- August 31, 2019



Chart reflects spending through August 2019

Spending Target: 100.0%

Revised 9/26/2019

Priority	Service Category	Original Allocation per RWPC	% of Grant Award	Amendments per RWPC	Contractual Amount	Amendment	Contractual Amount	Date of Original Procurement	Expended YTD	Percent YTD
5	Health Insurance Premiums and Cost Sharing	\$979,694	52%	\$142,285	\$1,121,979	\$100,000	\$1,221,979	9/1/2018	\$1,158,880	95%
6	Mental Health Services (1)	\$300,000	16%	\$0	\$300,000	-\$100,000	\$200,000	9/1/2018	\$162,969	81%
7	EIS - Incarcerated	\$166,211	9%	\$0	\$166,211	\$0	\$166,211	9/1/2018	\$165,924	100%
11	Hospice (2)	\$359,832	19%		\$359,832	\$0	\$359,832	9/1/2018	\$252,120	70%
15	Linguistic Services (3)	\$68,000	4%		\$68,000	\$0	\$68,000	9/1/2018	\$52,513	77%
	Increased award amount -Approved by RWPC for Health Insurance (a)	\$0	0%	-\$142,285						
Total Houston HSDA		1,873,737	100%	\$0	\$2,016,022	\$0	\$2,016,022		1,792,405	89%

- (1) Mental Health Services are under utilized. 2nd provider has been slow to increase service utilization.
- (2) Hospice care has had lower than expected client turn out and agency has other grant funding. Service category has been reduced for next grant cycle during P&A
- (3) Linguistic has slow billing but there has been lower than expected client utilization.
- (a) Reflect increase in State Services award and RWPC approval of increasing HIP category

* Final numbers will be presented after closeout period. TRG will move funds to other HSDAs to expend all grant funds to meet the required 95% spent threshold.

Ryan White B Procurement Report

The Houston Regional HIV/AIDS Resource Group, Inc.
 FY 1819 Ryan White Part B (FINAL)
 Procurement Report
 April 1, 2018 - March 31, 2019



Reflects spending through March 2019

Spending Target: 100 %

Revised 6/3/2019

Priority	Service Category	Original Allocation per RWPC	% of Grant Award	Amendments (a)	Contracted Amount	% of Grant Award	Date of Original Procurement	4th Quarter Amendments	Final Amount Expended	Percent YTD
6	Oral Health Care (1)	\$2,085,565	69%		\$2,085,565	62%	4/1/2018	(\$155,328)	\$1,930,237	93%
7	Health Insurance Premiums and Cost Sharing	\$726,885	24%	\$325,806	\$1,052,691	32%	4/1/2018	\$160,944	\$1,213,635	115%
9	Home and Community Based Health Services (2)	\$202,315	7%		\$202,315	6%	4/1/2018	(\$55,835)	\$146,480	72%
	Increased Award Amount (a)		0%	-\$325,806						
Total Houston HSDA		3,014,765	100%	\$0	\$3,340,571	100%		(\$50,219)	\$3,290,352	98%

NOTE TRG has a required spending goal of 95% of its total award. Thus, final quarter amendments are necessary to achieve such goal.

(1) OHS-Initially there was some staff turnover; service delays but ended strong

Note: TRG is currently reviewing reimbursement rates which will impact future spending

(2) HCBHS- Reduction in future award to reflect spending level

SS & RWB Service Utilization Report

2018 - 2019 DSHS State Services Service Utilization Report

9/1/2018 thru 8/31/2019 Houston HSDA

4th Quarter

Revised 9/30/2019

Funded Service	UDC		Gender				Race				Age Group							
	Goal	YTD	Male	Female	FTM	MTF	AA	White	Hisp	Other	0-12	13-19	20-24	25-34	35-44	45-49	50-64	65+
Early Intervention Services	871	712	84.97%	15.03%	0.00%	2.39%	68.96%	16.15%	13.76%	1.13%	0.00%	0.99%	6.04%	32.16%	24.44%	23.17%	12.22%	0.98%
Health Insurance Premiums	1,600	2,345	80.64%	18.77%	0.04%	0.55%	45.37%	25.58%	26.33%	2.72%	0.00%	0.24%	2.43%	17.69%	19.40%	27.67%	24.13%	8.44%
Hospice	38	33	87.87%	12.13%	0.00%	0.00%	45.45%	42.42%	12.13%	0.00%	0.00%	0.00%	3.03%	3.03%	21.22%	18.18%	39.39%	15.15%
Linguistic Services	150	53	48.11%	50.01%	0.00%	1.88%	56.60%	3.77%	7.55%	32.08%	0.00%	0.00%	5.68%	22.64%	24.53%	35.84%	7.54%	3.77%
Mental Health Services	325	215	85.12%	11.63%	0.00%	3.25%	36.28%	41.86%	19.53%	2.33%	0.00%	0.00%	0.00%	20.46%	21.39%	28.83%	24.18%	5.14%
Unduplicated Clients Served By State Services Funds:	NA	3,358	77.34%	21.51%	0.01%	1.14%	50.53%	25.96%	15.86%	7.65%	0.00%	0.25%	3.44%	19.20%	22.20%	26.74%	21.49%	6.70%

2018-2019 Ryan White Part B Service Utilization Report

4/1/2018 - 3/31/2019 Houston HSDA (4816)

4th Quarter - 4/1/2018 to 3/31/2019

Revised 5/8/2019

Funded Service	UDC		Gender				Race				Age Group							
	Goal	YTD	Male	Female	FTM	MTF	AA	White	Hisp	Other	0-12	13-19	20-24	25-34	35-44	45-49	50-64	65+
Health Insurance Premiums & Cost Sharing Assistance	1,250	5	100.00%	0.00%	0.00%	0.00%	60.00%	20.00%	20.00%	0.00%	0.00%	0.00%	20.00%	4.00%	16.00%	20.00%	20.00%	2.94%
Home & Community Based Health Services	30	34	70.59%	26.47%	0.00%	2.94%	58.82%	8.82%	32.35%	0.00%	0.00%	0.00%	5.69%	16.08%	26.47%	33.33%	12.55%	5.88%
Oral Health Care	3,100	856	72.62%	26.22%	0.00%	1.16%	50.23%	16.47%	31.50%	1.80%	0.00%	0.00%	2.02%	20.00%	15.66%	34.16%	21.00%	7.16%
Unduplicated Clients Served By RW Part B Funds:	NA	895	81.16%	17.47%	0.00%	1.37%	61.16%	16.96%	21.26%	0.62%	0.00%	0.00%	14.17%	13.08%	19.56%	29.49%	17.72%	5.98%

COMMENT:

The delay in Data Upload from CPCDMS into ARIES is the reason for the discrepancy in the HIP/HIA YTD Total.

Please see HINS Report for review on HIP/HIA totals.

HIA Service Utilization Report

Houston Ryan White Health Insurance Assistance Service Utilization Report

Period Reported:

09/01/2018-8/31/19

Revised: 9/24/2019



Request by Type	Assisted			NOT Assisted		
	Number of Requests (UOS)	Dollar Amount of Requests	Number of Clients (UDC)	Number of Requests (UOS)	Dollar Amount of Requests	Number of Clients (UDC)
Medical Co-Payment	1883	\$188,882.45	820			0
Medical Deductible	468	\$179,877.18	284			0
Medical Premium	7065	\$2,762,145.91	833			0
Pharmacy Co-Payment	9012	\$659,869.49	1600			0
APTC Tax Liability	1	\$500.00	1			0
Out of Network Out of Pocket	0	\$0.00	0			0
ACA Premium Subsidy Repayment	10	\$3,751.00	8	NA	NA	NA
Totals:	18439	\$3,787,524.03	3546	0	\$0.00	

Comments: This report represents services provided under all grants.

TRG's HRSA-Direct Projects

Rural Primary Care Network

1 CARES 4 Another Project

Positive VIBE Project

Part C: Early Intervention Services

- Part C-Early Intervention Services
 - Provides funds directly to public or private organizations for early intervention services and capacity development and planning.
- TRG designed Part C funding to address Rural Primary Care of East Texas Continuum of Care
- Additional Services:
 - Outpatient Ambulatory Medical Care
 - Medical Case Management
 - Case Management
 - ADAP
 - Oral Health Care
 - Nutritional Counseling and Supplements

Rural Primary Care Network

- Provides care services in four HSDAs – Tyler, Lufkin, Beaumont and Galveston HSDAs
- No service impact in Houston HSDA

RW Part C May 1-April 30

BHS-4815 (Beaumont HSDA)	OAHC-Specialty, MCM
BFHC-4814 (Lufkin HSDA)	OAHC, MNS/T
LCH-B-4815 (Beaumont HSDA)	MHS, MCM, NMCM
SHRT-4806 (Tyler HSDA)	OAHC-Tyler Clinic Only
UTMB-4825 (Galveston HSDA)	MCM, OAHC,

1
CARES
4
Another
&
Positive
VIBE
Project



Funded by Ryan White Part D



Provides a family-centered approach – encouraging all staff to incorporate the client’s support system in care.



The Project serves:
Women (25+)
Infants (0 – 23 months)
Children (2 – 12)
Youth (13 – 24)

The Positive VIBE Project Funding (Houston)

1. Medical Services Subtotal	\$310,129
a. Outpatient /Ambulatory Health Services	\$20,707
b. AIDS Pharmaceutical Assistance (local)	\$0
c. Oral Health Care	\$0
d. Home Health Care	\$0
e. Home and Community-based Health Services	\$0
f. Hospice Services	\$0
g. Mental Health Services	\$18,066
h. Medical Nutrition Therapy	\$0
i. Medical Case Management (including Treatment Adherence)	\$271,356
j. Substance Abuse Services - Outpatient	\$0
2. Support Services Sub-total	\$231,503
a. Case Management (non-Medical)	\$128,931
b. Child Care Services	\$0
c. Early Intervention Services	\$0
d. Emergency Financial Assistance	\$0
e. Food Bank/Home-Delivered Meals	\$0
f. Health Education/Risk Reduction	\$35,454
g. Legal Services	\$0
h. Linguistics Services	\$0
i. Medical Transportation Services*	\$16,000
j. Outreach Services	\$51,118
k. Permanency Planning	\$0
l. Psychosocial Support Services	\$0
m. Referral for Health Care/Supportive Services	\$0
n. Rehabilitation Services	\$0
o. Respite Care	\$0
p. Treatment Adherence Counseling	\$0
Total Service Allocations	\$541,632

*Agency Specific funding

Women, Infant, Children, Youth

- FY 19/20
Allocation for
RWD \$541,632

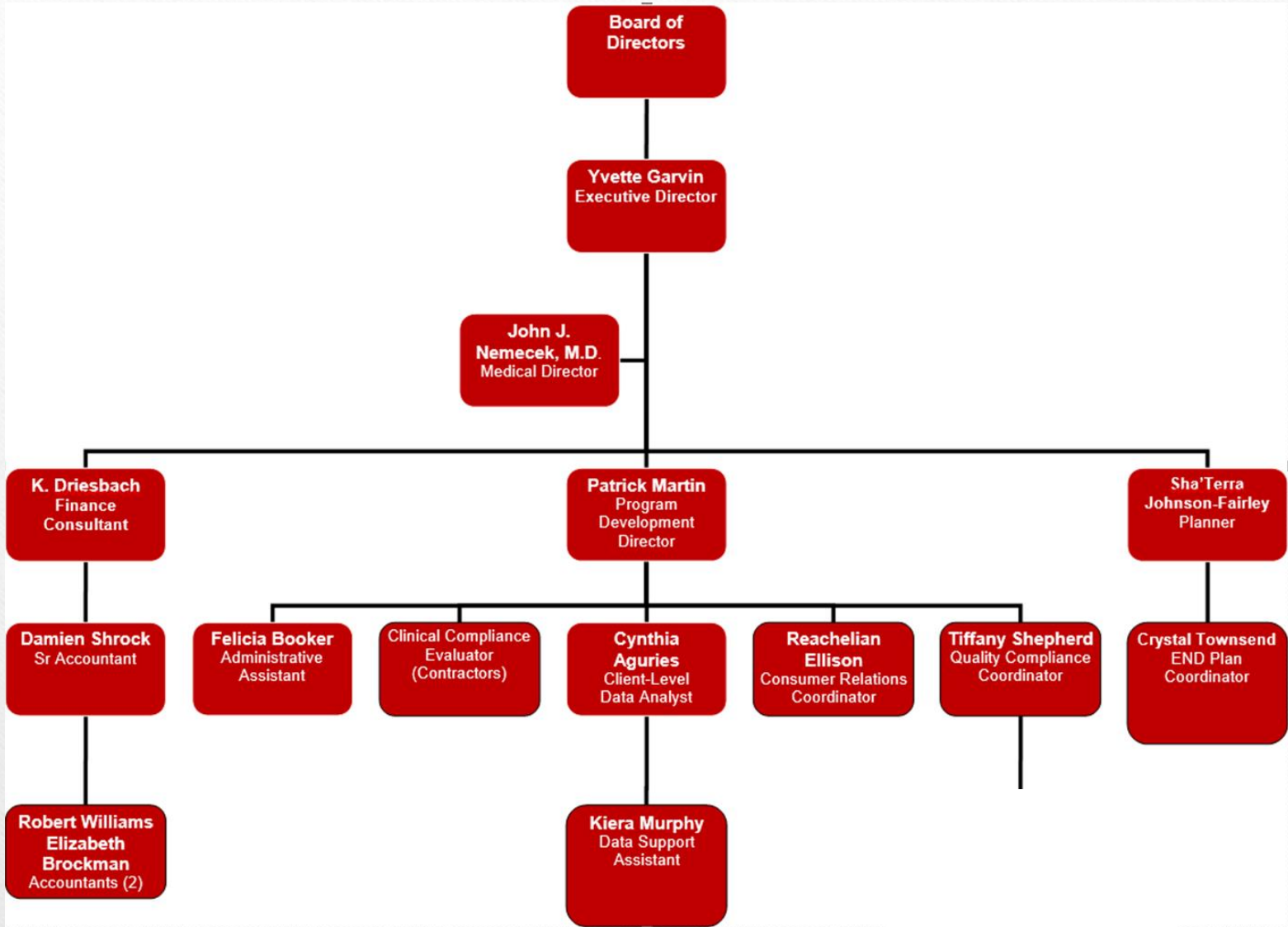
HOPWA: Housing Opportunities for Persons With AIDS

- Housing Case Management
- Permanent Housing Placement
- Short Term Rental, Mortgage & Utilities
- Tenant Based Rental Assistance
- DSHS HOPWA serves Texarkana, Tyler, Lufkin, Beaumont, Galveston (Matagorda county), Houston (Wharton, Colorado counties).



HOPWA February 1-August 31 (new 9/1-8/31)

AFH-4816 (Houston HSDA)	HCM, STSH, TSH, PHP (Post Incarceration)
AH-4825 (Houston HSDA)	HCM, STRMU, TBRA
BHA-4815 (Beaumont HSDA)	HCM, PHP, STRMU, TBRA
BFHC-4814 (Lufkin HSDA)	HCM, STRMU, TBRA
ETC-4806 (Tyler HSDA)	HCM, PHP, STRMU, TBRA
SHRT-4806 (Tyler HSDA)	HCM, PHP, STRMU, TBRA
SHRT-4805 (Texarkana HSDA)	HCM, STRMU, TBRA



Contact Information

The Houston Regional HIV/AIDS Resource Group, Inc.

500 Lovett Blvd

Houston, Texas 77006

713.526.1016

www.hivtrg.org



@HIVResourceGroup

Q&A
