



The Houston Regional HIV/AIDS Resource Group, Inc.

Eastern Texas HIV Administrative Service Area
Ryan White Part B, C, D, State Services, HOPWA

Houston Ryan White Planning Council
How to Best Meet The Need Process 2025

What does that mean? DSHS/TRG Jargon

- AA Administrative Agency
- DSHS Department of State Health Services
- HASA Health Administrative Service Area
- HRSA Health Services and Resources Administration
- HSDA HIV Service Delivery Area
- INP Internal Needs Panel
- PSRA Priority of Services and Resource Allocations
- RW Ryan White
- RWPC Ryan White Planning Council
- SOC Standards of Care
- TRG The Resource Group, Inc.
- PLWH People Living with HIV

TRG



- The Resource Group, Inc. is the largest and only community-based HIV/AIDS agency in the State of Texas founded as a 501(c)(3) non-profit agency in 1993 to serve as the community based administrative agency for collaborative HIV/AIDS services funding in Northeast, East and Southeast Texas.
- We have grown from an initial funding of \$2,500,000 to our current funding level of over \$10,000,000. We currently fund over 20 agencies in Northeast, East and Southeast Texas to provide over 80 different services through 5 state and federal grants.
- The Resource Group serves as the administrative agency for the Ryan White Part B grant, the Department of State and Health Services (DSHS) State Services grant and the HOPWA grant in a 51-county region. We also administer the Ryan White Part D grants for Houston & Galveston and the Ryan White Part C grant for 27 rural counties of Eastern Texas.

Ryan White Act

- First enacted by Congress in 1990, The Ryan White CARE Act was reauthorized in 1996 and again in 2000. In 2006, Ryan White Treatment Modernization Act. The last reauthorization was in 2009 as the Ryan White Treatment Extensions Act. Learn more: <https://hab.hrsa.gov/about-ryan-white-hiv-aids-program/about-ryan-white-hiv-aids-program>



Ryan White Act: Purpose

- To help communities and States increase availability of primary health care and support services that enhance access to care for persons living with HIV (PLWH) who fall through the public safety net.
- Reduce use of more costly inpatient care.
- Increase access to care for underserved populations.
- Improve quality of life for those affected by the epidemic.
- The Ryan White Act works towards these goals by funding local and State programs that provide primary medical care and support services; healthcare provider training; and technical assistance to help funded programs address implementation and emerging HIV care issues.

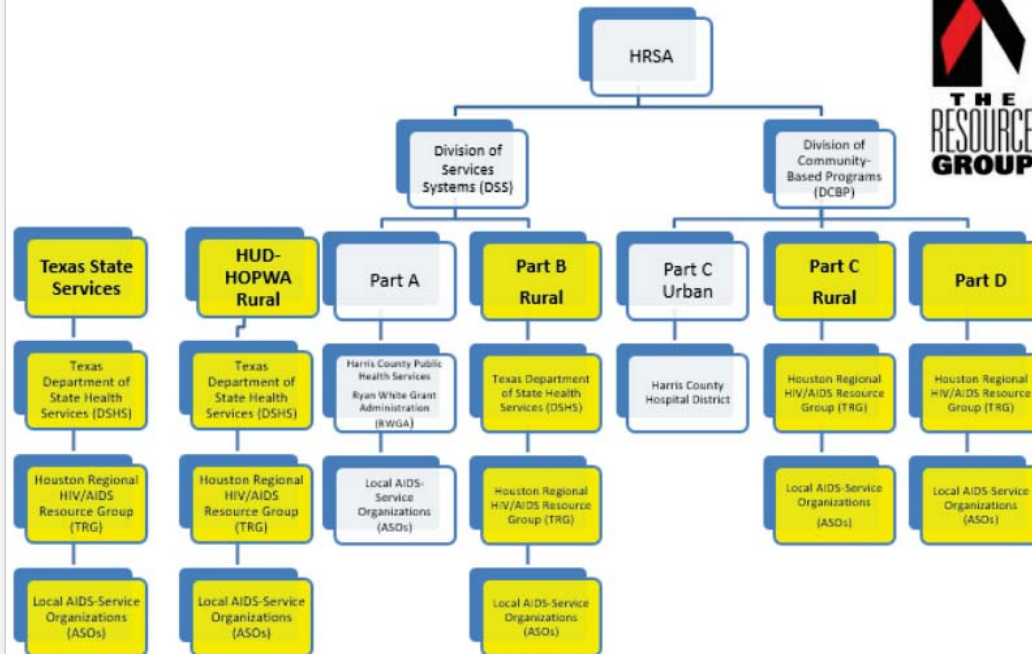
Structure of HIV Care Funding

U.S. Department of
Health & Human
Services (DHHS)



Health Resources & Services
Administration (HRSA)
HIV/AIDS Bureau (HAB)

Structure of HIV Care Services



Funding Service Categories

1. Outpatient Ambulatory Health Services
2. Local AIDS Pharmaceutical Assistance
3. Early Intervention Services
4. Health Insurance Premiums and Cost-Sharing Assistance
5. Home and Community-Based Health Services
6. Home Health Care
7. Hospice Services
8. Medical Case Management
9. Medical Nutritional Therapy
10. Mental Health Services
11. Oral Health Care
12. Substance Abuse Services Outpatient

1. Non-Medical Case Management
2. Child Care Services
3. Emergency Financial Assistance (EFA)
4. Food Bank Services
5. Health Education/Risk Reduction
6. Housing Services
7. Legal Services
8. Linguistics Services
9. Medical Transportation Services
10. Outreach Services
11. Psychological Support Services
12. Referral for Health Care and Supportive Services
13. Rehabilitation Services
14. Respite Care
15. Substance Abuse Services (Residential)
16. Other Professional Services
17. Treatment Adherence Counseling (Non-Medical)

■ Core Medical Services

■ Non-Core Supportive Services

Ryan White Part B & DSHS State Services Funding Overview

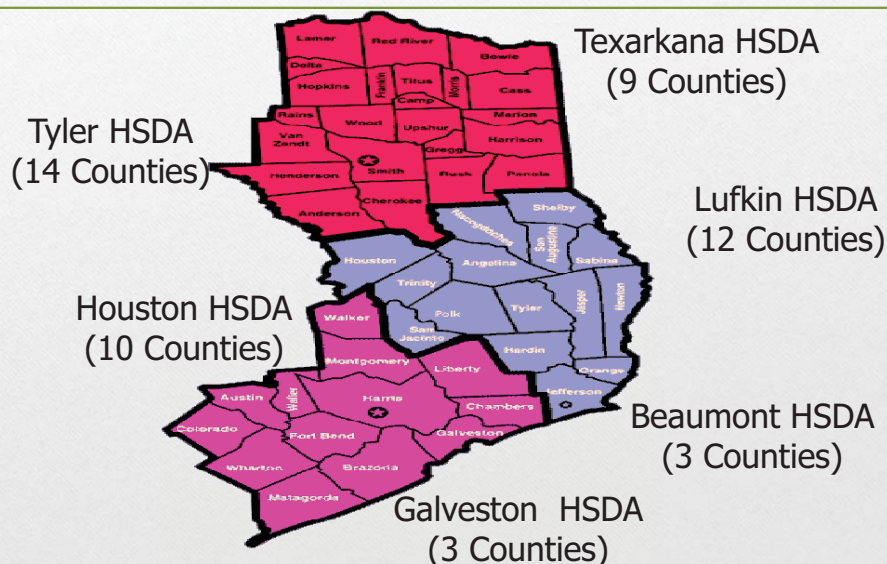
Part B: Grants to States and Territories

- Grants to all 50 States, District of Columbia, Puerto Rico, Guam, the U.S. Virgin Islands and 5 U.S. Pacific Territories or Associated Jurisdictions.
- Grants Include: Base Grant, AIDS Drug Assistance Program (ADAP), ADAP supplemental grants and grants to Emerging Communities (those reporting between 500-999 cumulative reported AIDS cases over the most 5 years....i.e. RURAL AREAS!)

What the heck is State Services?

- DSHS State Services funding is 'Texas' allocations of funding for HIV Services.
- Though not directly bound by the rules of the Ryan White HIV/AIDS Treatment Extension Act, DSHS keeps State Services consistent with Ryan White whenever possible.
- State Services are supportive HIV care services.

DSHS HIV Service Delivery Area for Eastern Texas 51-County Service Area



Houston HIV Service Delivery Area

- The Houston HSDA is a 10-county service area including the counties of the Houston EMA.
- DSHS allocates funds by HSDA.



Houston HSDA Funded Services

• RWB

- Oral Health Services-Prosthodontics
- Oral Health Services-General
- Health Insurance Assistance

• SS

- Health Insurance Assistance
- Mental Health Services
- Mental Health Services-Special Populations
- Hospice
- Non-Medical Case Management
- Linguistic Services

State Services DSHS Project Specific

- Referral for Healthcare: Agency Enrollment Worker*
- Food Bank*
- Medical Transportation*
- Emergency Financial Assistance: Compassionate Care*

• RWD

- Outpatient Ambulatory Health Services
- Mental Health Services
- Medical Case Management-Transition
- Non-Medical Case Management (Patient Navigation, Recruitment & Retention Specialist)
- Health Education/Risk Reduction
- Medical (Health) Case Management
- Medical Transportation
- Outreach Services
- Referral for Healthcare/Support Services
- Non-Medical Case Management

• HOPWA

- Tenant Based Rental Assistance
- Housing Case Management
- Short Term Rental Assistance
- Permanent Housing Placement

FUNDAMENTAL DIFFERENCE

Part A

- Guidance for Part A comes directly to the Recipient from the HRSA Division of Service Systems

Part B

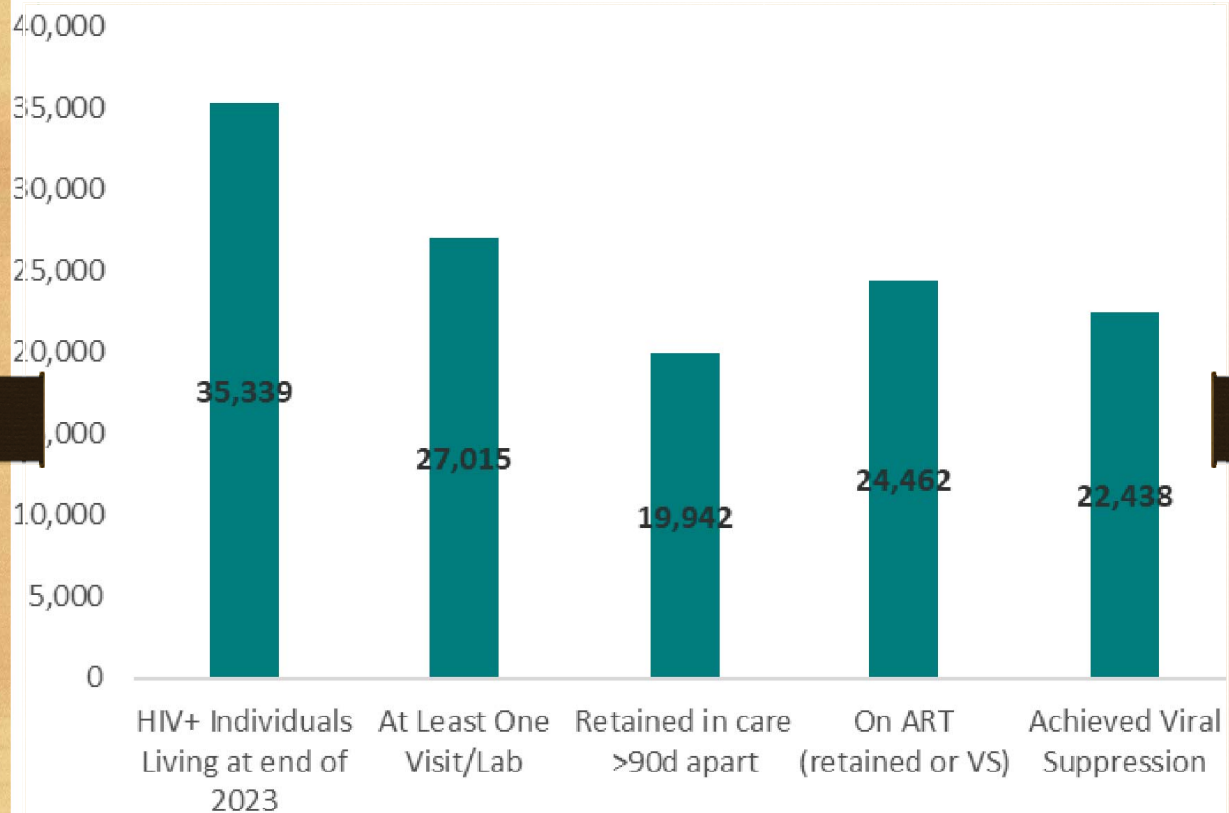
- Guidance for Part B comes directly to DSHS from the HRSA Division of Service Systems
- Guidance for State Services comes to TRG from the DSHS.

THE END RESULT

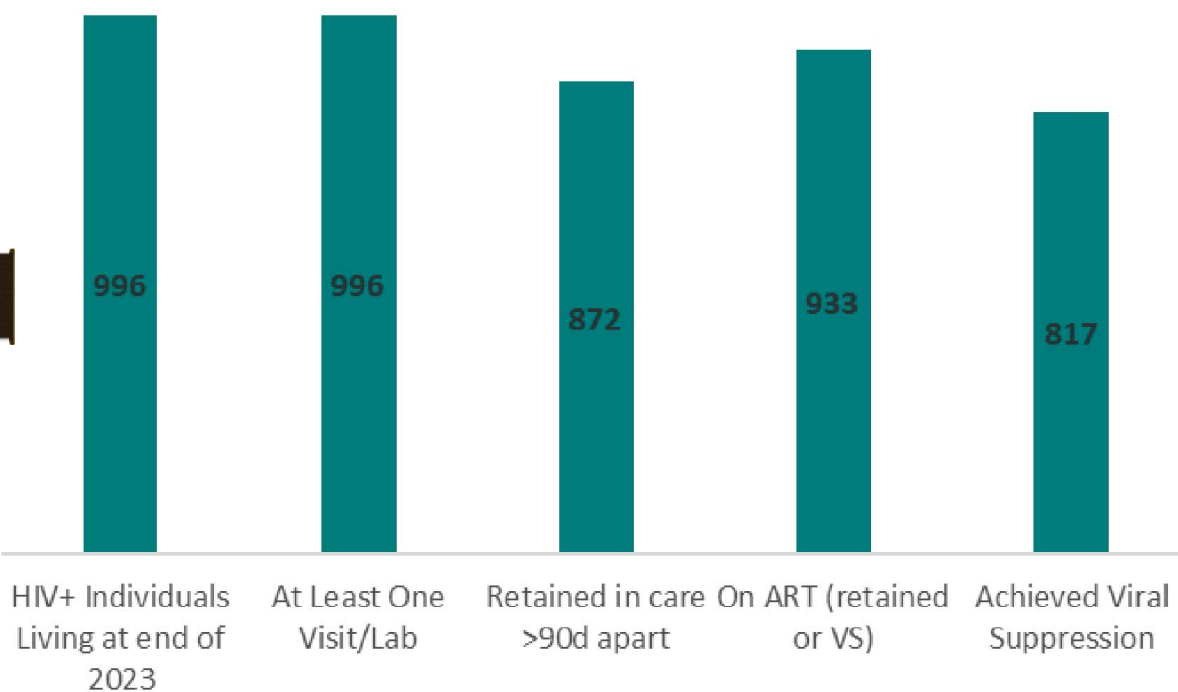
- Part A and Part B rules, requirements, and guidance may not always match.
- The Recipient and AA staff guidance in the RWPC processes may vary accordingly.
- Whenever possible, uniformity is desired. But uniformity may not always be able to be achieved.

The Part B “Process”

- The Planning Council will use its processes to make **“recommendations”** to The Resource Group regarding service categories, standards of care, outcome measures and priorities and allocations.
- The Resource Group will forward those **“recommendations”** and any concerns to DSHS.
- DSHS has final approval.
- Note: This does not exclude The Resource Group from making programmatic alterations to maintain consistency with DSHS policies or guidance.



	HIV+ Individuals Living at end of 2023	At Least One Visit/Lab	Retained in care >90d apart	On ART (Retained In Care or VS)	Achieved Viral Suppression
Total	35,339	27,015	19,942	24,462	22,438
Sex at Birth					
Female	8,268	6,369	4,707	5,744	5,215
Male	27,071	20,646	15,235	18,718	17,223
Current Age					
0-24	34	26	24	25	17
25-34	7,133	5,692	3,996	4,928	4,425
35-44	8,345	6,405	4,677	5,750	5,185
45-54	7,722	5,826	4,328	5,348	4,927
55-64	7,146	5,438	4,221	5,103	4,779
65+	3,720	2,602	2,009	2,460	2,340
Race/ethnicity					
Black	11,796	11,726	8,306	10,394	9,376
Latinx	12,399	9,777	7593	8923	8221
White	5129	3917	2832	3671	3483
Multi-racial	1496	1209	910	1102	996
Other groups	519	388	301	372	362
Priority Groups					
White MSM	3865	3047	2212	2876	2760
Black MSM	7721	5719	3937	5041	4590
Hispanic MSM	8492	6757	5271	6230	5782
Black H Women	4244	3249	2353	2941	2675
Mode of transmission groups					
MSM	21922	17025	12540	15500	14366
PWID	2453	1751	1318	1557	1370
MSM and PWID	1327	979	730	860	756
Pediatric	305	223	167	194	160



Total	996	996	872	933	817
Sex at Birth					
Female	205	205	178	190	171
Male	791	791	694	743	646
Current Age					
0-24	136	136	118	125	105
25-34	381	381	326	356	313
35-44	238	238	208	224	196
45-54	137	137	122	129	117
55-64	92	92	86	87	76
65+	12	12	12	12	10
Race/ethnicity					
Black	368	368	340	355	308
Latinx	508	508	428	466	413
White	73	73	60	67	60
Multi-racial	40	40	37	38	30
Other groups	7	7	7	7	6
Priority Groups					
White MSM	47	47	40	43	39
Black MSM	213	213	194	207	181
Hispanic MSM	349	349	297	323	288
Black H Women	56	56	53	54	49
Mode of transmission groups					
MSM	672	672	587	631	555
PWID	56	56	49	52	42
MSM and PWID	30	30	28	29	24
Pediatric	47	47	43	45	36

New HIV Diagnosis Houston HSDA in 2023

	2023
Houston HSDA	1506

2023 Linkage to Care in Houston

	2023 Cases
Linked within a year	
No	108
Yes	1398
Linkage_Week	
Same day as dx	413
1 day after dx	97
2 days after dx	26
3 days after dx	37
4 days after dx	22
5 days after dx	38
6 days after dx	43
7 days after dx	47
Linkage_Month	
Within 30 Days of Dx	1150
Within 31-59 Days of Dx	111
Within 60-180 Days of Dx	110
Within 181-365 Days of Dx	27
Not Linked Within 365 Days of DX	108

State Services Procurement Report

The Houston Regional HIV/AIDS Resource Group, Inc.
FY 2324 DSHS State Services
Procurement Report
September 1, 2023 - August 31, 2024



Chart reflects spending through August (final) 2024

Spending Target: 100%

Revised 11/4/2024

Priority	Service Category	Original Allocation per	% of Grant	Amendments per RWPC	Contractual Amount	Amendment	Contractual Amount	Date of Original	Expended YTD	Percent YTD
5	Health Insurance Premiums and Cost Sharing (1)	\$892,101	29%	\$808,566	\$1,700,667	\$0	\$1,700,667	9/1/2023	\$1,700,666	100%
6	Mental Health Services	\$300,000	10%	-\$102,307	\$197,693	\$0	\$197,693	9/1/2023	\$197,372	100%
11	Hospice	\$293,832	10%	-\$20,612	\$273,220	\$0	\$273,220	9/1/2023	\$272,800	100%
13	Non Medical Case Management (2)	\$350,000	12%	-\$170,746	\$179,254	\$0	\$179,254	9/1/2023	\$179,253	100%
16	Linguistic Services	\$68,000	2%	-\$50,000	\$18,000	\$0	\$18,000	9/1/2023	\$9,649	54%
	Referral for Healthcare-Incarcerated (5)	\$141,000	5%	-\$141,000	\$0	\$0	\$0	9/1/2023	\$0	0%
	ADAP/Referral for Healthcare	\$525,000	17%	-\$37,017	\$487,983	\$0	\$487,983	9/1/2023	\$436,347	89%
	Food Bank	\$5,400	0.2%	\$0	\$5,400	\$0	\$5,400	9/1/2023	\$4,225	78%
	Medical Transportation	\$84,600	3%	\$0	\$84,600	\$0	\$84,600	9/1/2023	\$68,651	81%
	Emergency Financial Assistance (Compassionate Care)	\$368,123	12%	-\$140,000	\$228,123	\$0	\$228,123	9/1/2023	\$228,123	100%
		3,028,056	100%	\$146,884	\$3,174,940	\$0	\$3,174,940		3,097,087	98%

Note

- (1) HIP- Funded by Part A, B and State Services/. Provider spends grant funds by ending dates Part A -2/28; B-3/31;SS-8/31.
(2) Reallocation approved due to a change in provider.
(5) Service was eliminated; reallocation approved by RWPC

SS Service Utilization Report

2023 - 2024 DSHS State Services Service Utilization Report
9/1/2023 thru 8/31/2024 Houston HSDA
4th Quarter - 9/1/2023 to 8/31/2024

Revised 1/10/2024

Funded Service	UDC		Gender				Race				Age Group							
	Goal	YTD	Male	Female	FTM	MTF	AA	White	Hisp	Other	0-12	13-19	20-24	25-34	35-44	45-49	50-64	65+
Hospice	15	33	75.76%	24.24%	0.00%	0.00%	42.43%	27.27%	27.27%	3.03%	0.00%	0.00%	0.00%	3.04%	18.18%	24.24%	39.39%	15.15%
Mental Health Services	205	119	92.44%	3.36%	0.00%	4.20%	25.63%	35.70%	28.15%	10.52%	0.00%	0.00%	0.84%	22.68%	20.16%	14.29%	27.74%	14.29%
Health Insurance Premiums	2,050	900	82.24%	16.66%	0.22%	0.88%	36.45%	24.66%	34.23%	4.66%	0.00%	0.00%	1.11%	15.66%	21.33%	24.33%	29.13%	8.44%
Non-Medical Case Management	185	186	79.04%	17.20%	0.00%	3.76%	55.20%	16.49%	27.24%	1.07%	0.00%	0.00%	1.61%	20.44%	27.95%	17.20%	26.89%	5.91%
Linguistic services	65	26	42.30%	53.86%	0.00%	3.84%	53.84%	3.84%	0.00%	42.32%	0.00%	0.00%	3.84%	7.69%	26.92%	38.48%	15.38%	7.69%
Unduplicated Clients Served By State Services Funds	2,520	1,264	74.36%	23.06%	0.04%	2.54%	42.71%	21.59%	23.38%	12.32%	0.00%	0.00%	1.48%	13.90%	22.91%	23.70%	27.71%	10.30%

Completed by: cegomes

Ryan White B Procurement Report

The Houston Regional HIV/AIDS Resource Group, Inc.
FY 2324 Ryan White Part B
Procurement Report
April 1, 2023 - March 31, 2024



Reflects spending through March 2024 (Final)

Spending Target: 100%

Revised 6/12/24

Priority	Service Category	Original Allocation per	% of Grant	Amendment*	Contractual Amount	Amendment	Contractual Amount	Date of Original	Expended YTD	Percent YTD
4	Oral Health Service-General	\$1,833,318	53%	(\$92,271)	\$1,741,047		\$1,741,047	4/1/2023	\$1,664,211	96%
4	Oral Health Service -Prosthodontics	\$576,750	17%	\$39,150	\$615,900		\$615,900	4/1/2023	\$692,336	112%
5	Health Insurance Premiums and Cost Sharing	\$1,028,433	30%	\$1,588	\$1,030,021		\$1,030,021	4/1/2023	\$1,030,021	100%
				\$0	\$0		\$0			
		\$0	0%	\$0	\$0					
	Total Houston HSDA	3,438,501	100%	(\$1,533)	3,386,968	\$0	\$3,386,968		3,386,568	100%

Note: Spending variances of 10% of target will be addressed:

Ryan White B Service Utilization Report

2023-2024 Ryan White Part B Service Utilization Report
04/01/2023 thru 03/31/2024 Houston HSDA (4816)
4th Quarter (04/01/23 - 03/31/2024)

Revised 4/26/2024

Funded Service	UDC		Gender				Race				Age Group							
	Goal	YTD	Male	Female	FTM	MTF	AA	White	Hisp	Other	0-12	13-19	20-24	25-34	35-44	45-49	50-64	65+
Health Insurance Premiums	1,150	759	83.73%	16.20%	2.00%	5.00%	37.94%	25.82%	33.08%	3.16%	0.00%	0.00%	0.65%	16.60%	20.68%	24.76%	29.94%	7.37%
Home and Community Based Health Services	0	0	0.00%	0.00%	0.00%	0.00%	0.00%	0.00%	0.00%	0.00%	0.00%	0.00%	0.00%	0.00%	0.00%	0.00%	0.00%	0.00%
Oral Health Care	4,224	2,792	72.71%	25.22%	0.00%	2.07%	51.21%	11.21%	35.13%	2.45%	0.00%	0.25%	1.67%	18.12%	22.85%	23.31%	23.53%	10.27%
Unduplicated Clients Served By State Services Funds	NA	3,551	76.49%	18.97%	1.00%	3.54%	44.58%	18.50%	34.11%	2.81%	0.00%	0.13%	1.16%	17.36%	21.77%	24.04%	26.72%	8.82%

Completed By: L.Landrum

HIA Service Utilization Report

Houston Ryan White Health Insurance Assistance Service Utilization Report

Period Reported:

09/01/2023-08/31/2024

Revised: 9/23/2024



Request by Type	Assisted			NOT Assisted		
	Number of Requests (UOS)	Dollar Amount of Requests	Number of Clients (UDC)	Number of Requests (UOS)	Dollar Amount of Requests	Number of Clients (UDC)
Medical Co-Payment	1445	\$209,320.99	525	0	\$0.00	0
Medical Deductible	142	\$59,951.69	95	0	\$0.00	0
Medical Premium	7252	\$2,704,209.81	852	0	\$0.00	0
Pharmacy Co-Payment	28566	\$1,309,497.68	2324	0	\$0.00	0
APTC Tax Liability	0	\$0.00	0	0	\$0.00	0
Out of Network Out of Pocket	0	\$0.00	0	0	\$0.00	0
ACA Premium Subsidy Repayment	0	\$0.00	0	NA	NA	NA
Totals:	37405	\$4,282,980.17	3796	0	\$0.00	

Comments: This report represents services provided under all grants.

TRG's HRSA-Direct Projects

Rural Primary Care Network

1 CARES 4 Another Project

Positive VIBE Project

Part C: Early Intervention Services

- Part C-Early Intervention Services
 - Provides funds directly to public or private organizations for early intervention services and capacity development and planning.
- TRG designed Part C funding to address Rural Primary Care of East Texas Continuum of Care
- Additional Services:
 - Outpatient Ambulatory Medical Care
 - Medical Case Management
 - Case Management
 - ADAP
 - Oral Health Care
 - Nutritional Counseling and Supplements

Rural Primary Care Network

- Provides care services in four HSDAs – Tyler, Lufkin, Beaumont and Galveston HSDAs
- No service impact in Houston HSDA

RW Part C May 1-April 30

BHS-4815 (Beaumont HSDA)	OAHC-Specialty, MCM
BFHC-4814 (Lufkin HSDA)	OAHC, MNS/T
LCH-B-4815 (Beaumont HSDA)	MHS, MCM, NMCM
SHRT-4806 (Tyler HSDA)	OAHC-Tyler Clinic Only
UTMB-4825 (Galveston HSDA)	MCM, OAHC,

Part C Allocation FY24 \$1,086,342

1 CARES 4 Another & Positive VIBE Project



Funded by Ryan White Part D



Provides a family-centered approach – encouraging all staff to incorporate the client's support system in care.



The Project serves:

Women (25+)
Infants (0 – 23 months)
Children (2 – 12)
Youth (13 – 24)

- Promotes participation in clinical research.
- Removes barriers that prevent populations from accessing primary care.
- Empowers consumers to be equal partners in their own care
- Must access the project's primary care to accessing some of its funded support services (Medical Transportation).
- Houston and Galveston HSDAs benefits from this grant.

**2425 Positive VIBE Project
Funding (Houston)**
Projected

1. Medical Services Subtotal	\$321,376
a. Outpatient /Ambulatory Health Services	\$54,392
b. AIDS Pharmaceutical Assistance (local)	\$0
c. Oral Health Care	\$0
d. Home Health Care	\$0
e. Home and Community-based Health Services	\$0
f. Hospice Services	\$0
g. Mental Health Services	\$25,618
h. Medical Nutrition Therapy	\$0
i. Medical Case Management (CC)	\$241,366
j. Substance Abuse Services - Outpatient	\$0
2. Support Services Sub-total	\$213,533
a. Case Management (non-Medical) (CC)	\$157,479
b. Child Care Services	\$0
c. Early Intervention Services	\$0
d. Emergency Financial Assistance	\$0
e. Food Bank/Home-Delivered Meals	\$0
f. Health Education/Risk Reduction (CC)	\$11,380
g. Legal Services	\$0
h. Linguistics Services	\$0
i. Medical Transportation Services*	\$15,500
j. Outreach Services (CC)	\$16,414
k. Permanency Planning	\$0
l. Psychosocial Support Services	\$0
m. Referral for Health Care/Supportive Services (CC)	\$12,760
n. Rehabilitation Services	\$0
o. Respite Care	\$0
p. Treatment Adherence Counseling	\$0
Total Service Allocations	\$534,909

*Agency Specific funding
CC = Care Coordination (bundles service interventions for PLWH at a single-point of delivery.)
NMCM includes Non-Medical Case Management and Patient Navigation service interventions.

HOPWA: Housing Opportunities for Persons With AIDS

- Housing Case Management
- Permanent Housing Placement
- Short Term Rental, Mortgage & Utilities
- Tenant Based Rental Assistance
- DSHS HOPWA serves Texarkana, Tyler, Lufkin, Beaumont, Galveston (Matagorda county), Houston (Fort Bend, Wharton, Colorado counties).



HOPWA September 1-August 31

AFH-4816 (Houston HSDA)	HCM, STSH, TSH, PHP (Post Incarceration)
AH-4825 (Houston HSDA)	HCM, STRMU, TBRA
BHA-4815 (Beaumont HSDA)	HCM, PHP, STRMU, TBRA
BFHC-4814 (Lufkin HSDA)	HCM, STRMU, TBRA
ETC-4806 (Tyler HSDA)	HCM, PHP, STRMU, TBRA
SHRT-4806 (Tyler HSDA)	HCM, PHP, STRMU, TBRA
SHRT-4805 (Texarkana HSDA)	HCM, STRMU, TBRA

**Houston HSDA HOPWA
Allocation FY24
\$657,365**

Contact Information

The Houston Regional HIV/AIDS Resource Group, Inc.

3700 Buffalo Speedway Suite 250

Houston, Texas 77098

713.526.1016

Website Under Construction



@HIVResourceGroup

Q&A
