

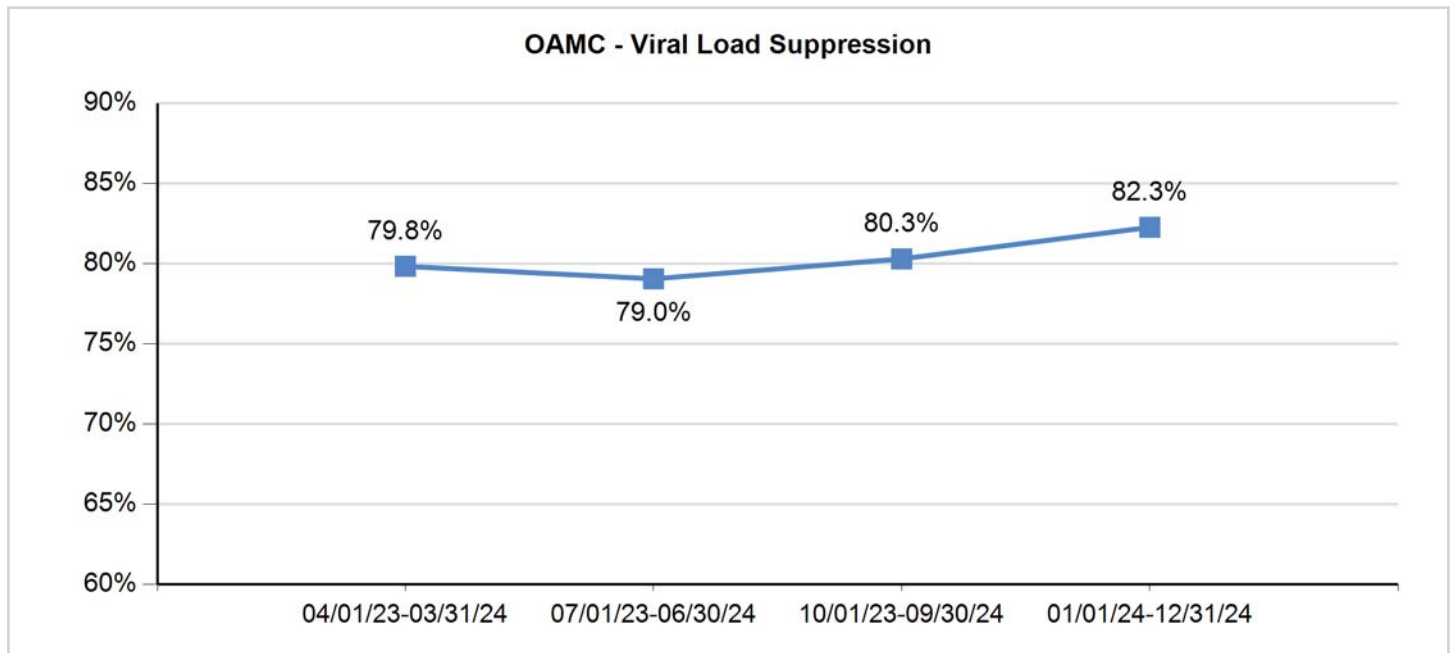
# HARRIS COUNTY PUBLIC HEALTH AND ENVIRONMENTAL SERVICES - RWGA

## Clinical Quality Management Committee Quarterly Report

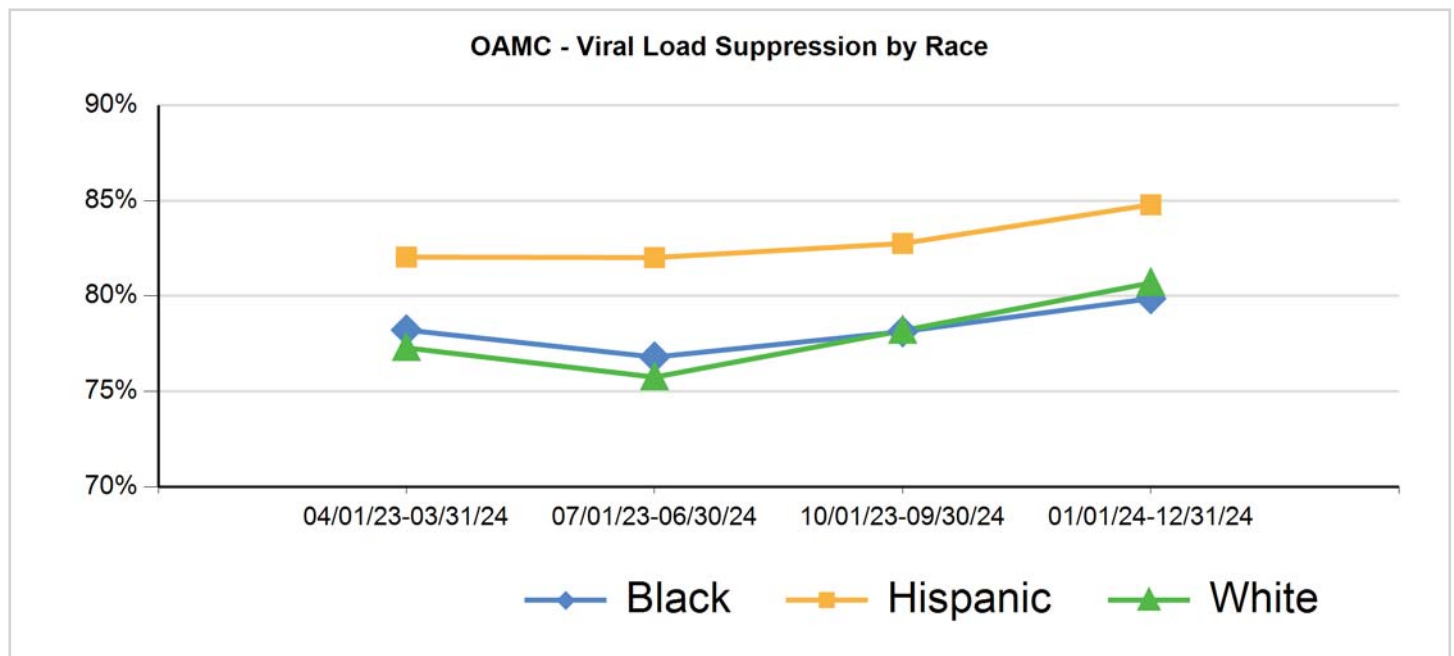
Last Quarter Start Date: 1/1/2024

Agency: ALL

OAMC - Viral Load Suppression				
	04/01/23 - 03/31/24	07/01/23 - 06/30/24	10/01/23 - 09/30/24	01/01/24 - 12/31/24
Number of clients in the denominator with a HIV viral load less than 200 copies/ml at last HIV viral load test during the measurement year	5,199	5,157	5,218	5,211
Number of clients living with HIV, with at least one medical visit in the measurement year	6,513	6,524	6,499	6,335
Percentage	79.8%	79.0%	80.3%	82.3%
Change from Previous Quarter Results	-3.2%	-0.8%	1.2%	2.0%



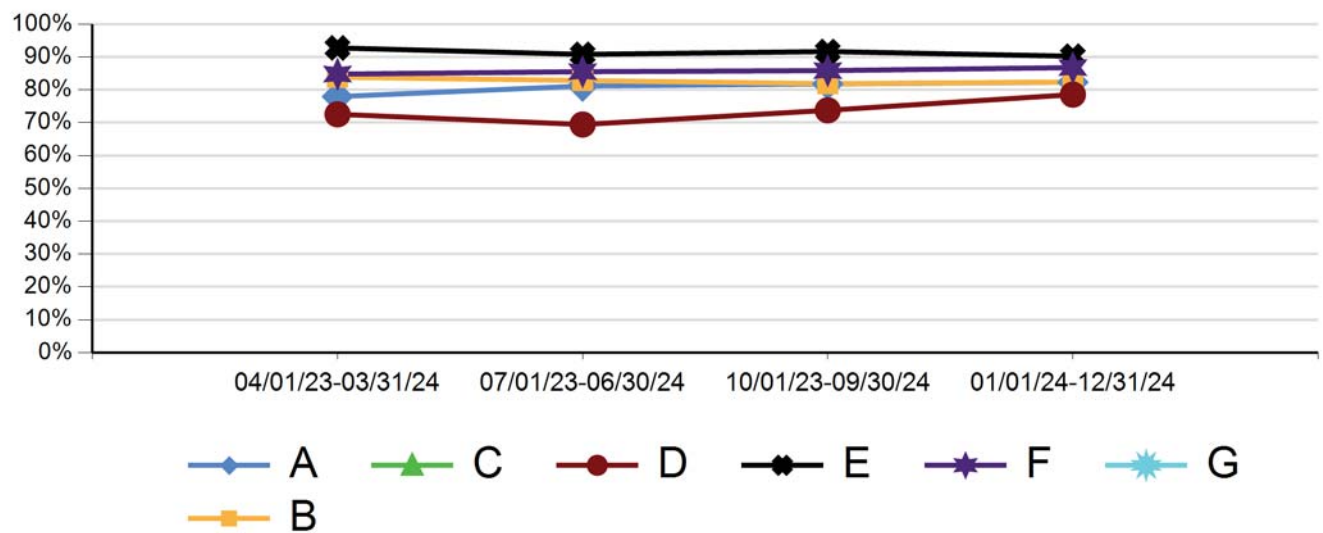
OAMC - Viral Load Suppression by Race/Ethnicity									
	07/01/23 - 06/30/24			10/01/23 - 09/30/24			01/01/24 - 12/31/24		
	Black	Hisp	White	Black	Hisp	White	Black	Hisp	White
Number of clients in the denominator with a HIV viral load less than 200 copies/ml at last HIV viral load test during the measurement year	2,264	2,394	406	2,269	2,442	405	2,257	2,446	401
Number of clients living with HIV, with at least one medical visit in the measurement year	2,948	2,919	536	2,904	2,951	518	2,826	2,885	497
Percentage	76.8%	82.0%	75.7%	78.1%	82.8%	78.2%	79.9%	84.8%	80.7%
Change from Previous Quarter Results	-1.4%	0.0%	-1.5%	1.3%	0.7%	2.4%	1.7%	2.0%	2.5%



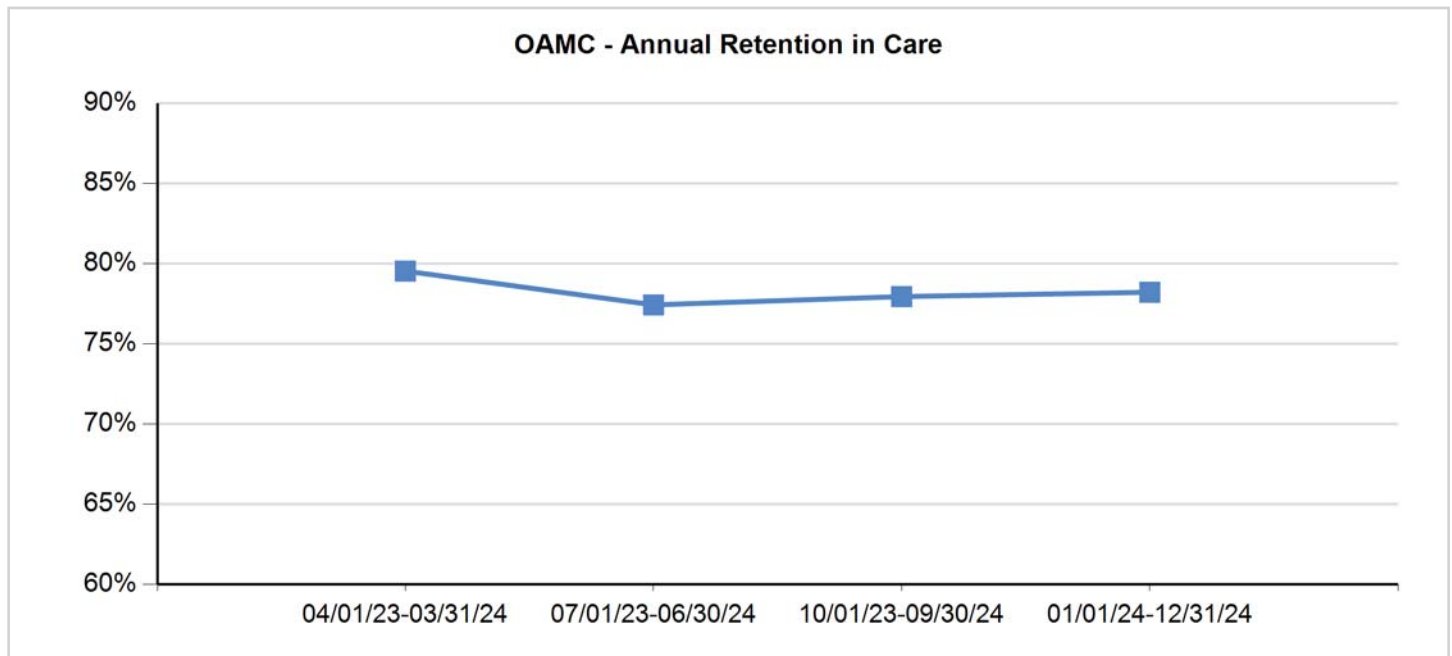
## OAMC - Viral Load Suppression by Agency

	10/01/23 - 09/30/24							01/01/24 - 12/31/24						
	A	B	C	D	E	F	G	A	B	C	D	E	F	G
Number of clients in the denominator with a HIV viral load less than 200 copies/ml at last HIV viral load test during the measurement year	719	1,911	0	1,443	77	1,099	0	704	1,850	0	1,495	74	1,116	0
Number of clients living with HIV, with at least one medical visit in the measurement year	879	2,334	0	1,956	84	1,280	0	855	2,246	0	1,903	82	1,286	0
Percentage	81.8%	81.9%	NaN	73.8%	91.7%	85.9%	0.0%	82.3%	82.4%	NaN	78.6%	90.2%	86.8%	0.0%
Change from Previous Quarter Results	0.6%	-1.0%	NaN	4.3%	0.9%	0.3%	NaN	0.5%	0.5%	NaN	4.8%	-1.4%	0.9%	NaN

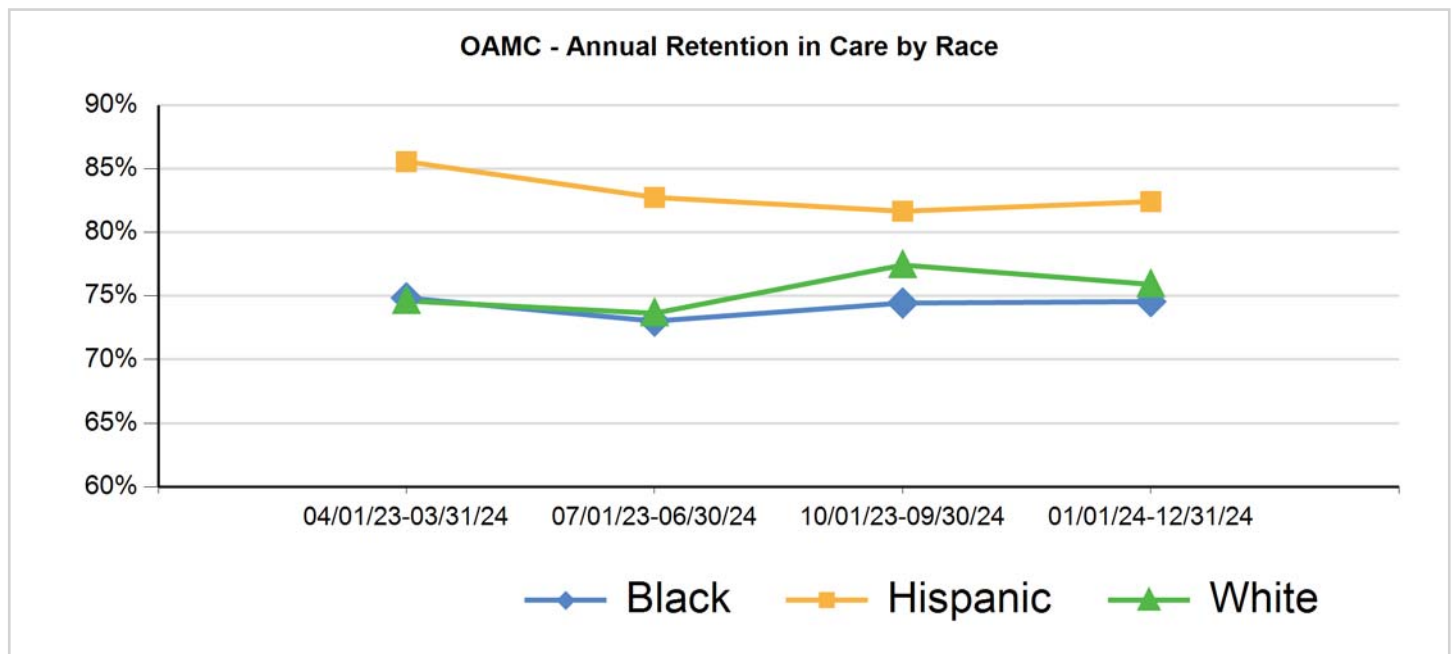
## OAMC -Viral Load Suppression by Agency



OAMC - Annual Retention in Care				
	04/01/23 - 03/31/24	07/01/23 - 06/30/24	10/01/23 - 09/30/24	01/01/24 - 12/31/24
Number of clients in the denominator who had at least two HIV medical care encounters at least 90 days apart within the measurement year.	4,725	4,643	4,678	4,594
Number of clients living with HIV who had at least one HIV medical encounter within the measurement year	5,941	5,997	6,002	5,874
Percentage	79.5%	77.4%	77.9%	78.2%
Change from Previous Quarter Results	-0.7%	-2.1%	0.5%	0.3%



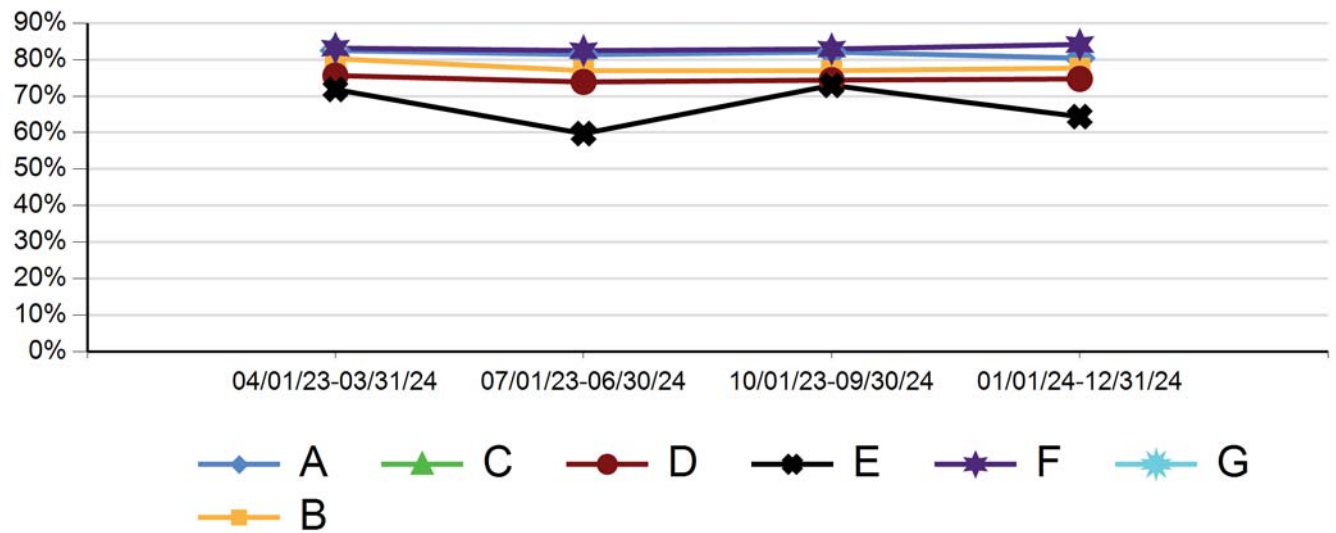
OAMC - Annual Retention in Care by Race/Ethnicity									
	07/01/23 - 06/30/24			10/01/23 - 09/30/24			01/01/24 - 12/31/24		
	Black	Hisp	White	Black	Hisp	White	Black	Hisp	White
Number of clients in the denominator who had at least two HIV medical care encounters at least 90 days apart within the measurement year.	1,979	2,217	366	1,984	2,235	374	1,937	2,227	353
Number of clients living with HIV who had at least one HIV medical encounter within the measurement year	2,710	2,679	497	2,665	2,737	483	2,598	2,702	465
Percentage	73.0%	82.8%	73.6%	74.4%	81.7%	77.4%	74.6%	82.4%	75.9%
Change from Previous Quarter Results	-1.8%	-2.8%	-1.0%	1.4%	-1.1%	3.8%	0.1%	0.8%	-1.5%



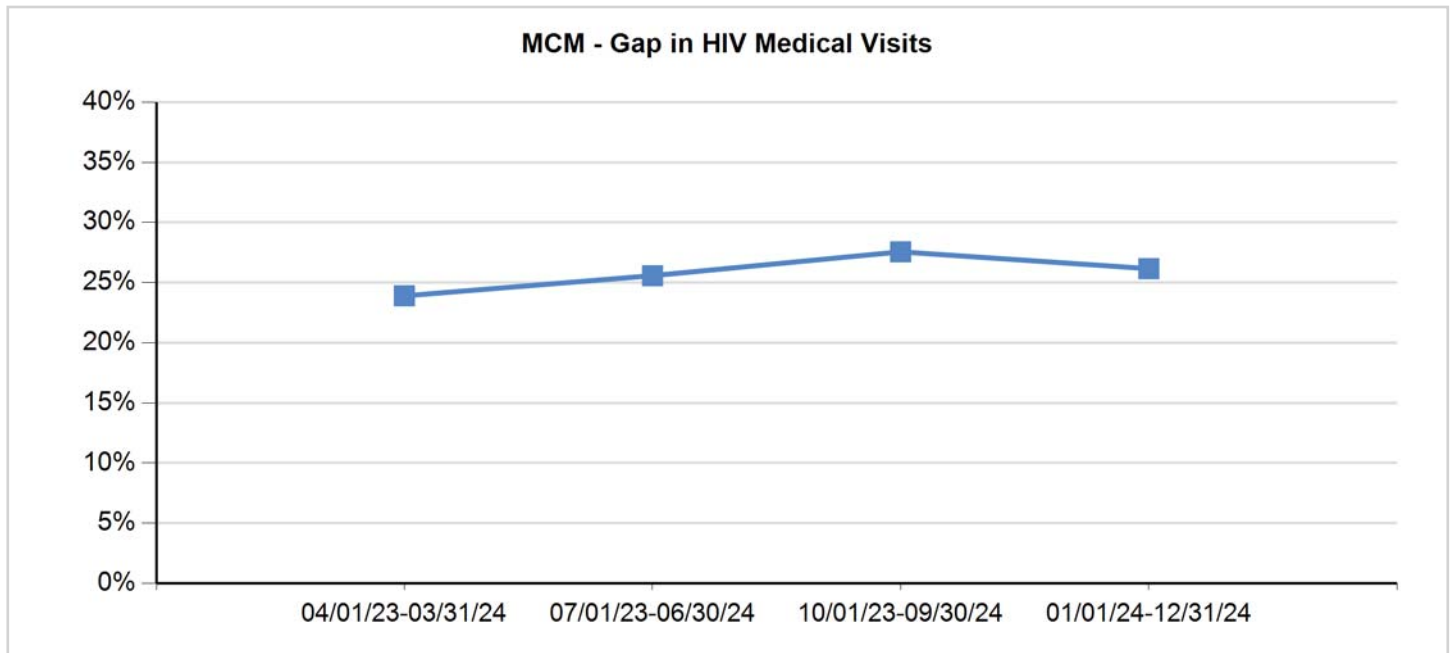
## OAMC - Annual Retention in Care by Agency

	10/01/23 - 09/30/24							01/01/24 - 12/31/24						
	A	B	C	D	E	F	G	A	B	C	D	E	F	G
Number of clients in the denominator who had at least two HIV medical care encounters at least 90 days apart within the measurement year.	701	1,689	0	1,380	54	878	0	665	1,650	0	1,357	47	903	0
Number of clients living with HIV who had at least one HIV medical encounter within the measurement year	854	2,194	0	1,855	74	1,059	0	827	2,124	0	1,816	73	1,073	0
Percentage	82.1%	77.0%	NaN	74.4%	73.0%	82.9%	0.0%	80.4%	77.7%	NaN	74.7%	64.4%	84.2%	0.0%
Change from Previous Quarter Results	0.7%	0.0%	NaN	0.5%	13.2%	0.4%	NaN	-1.7%	0.7%	NaN	0.3%	-8.6%	1.2%	NaN

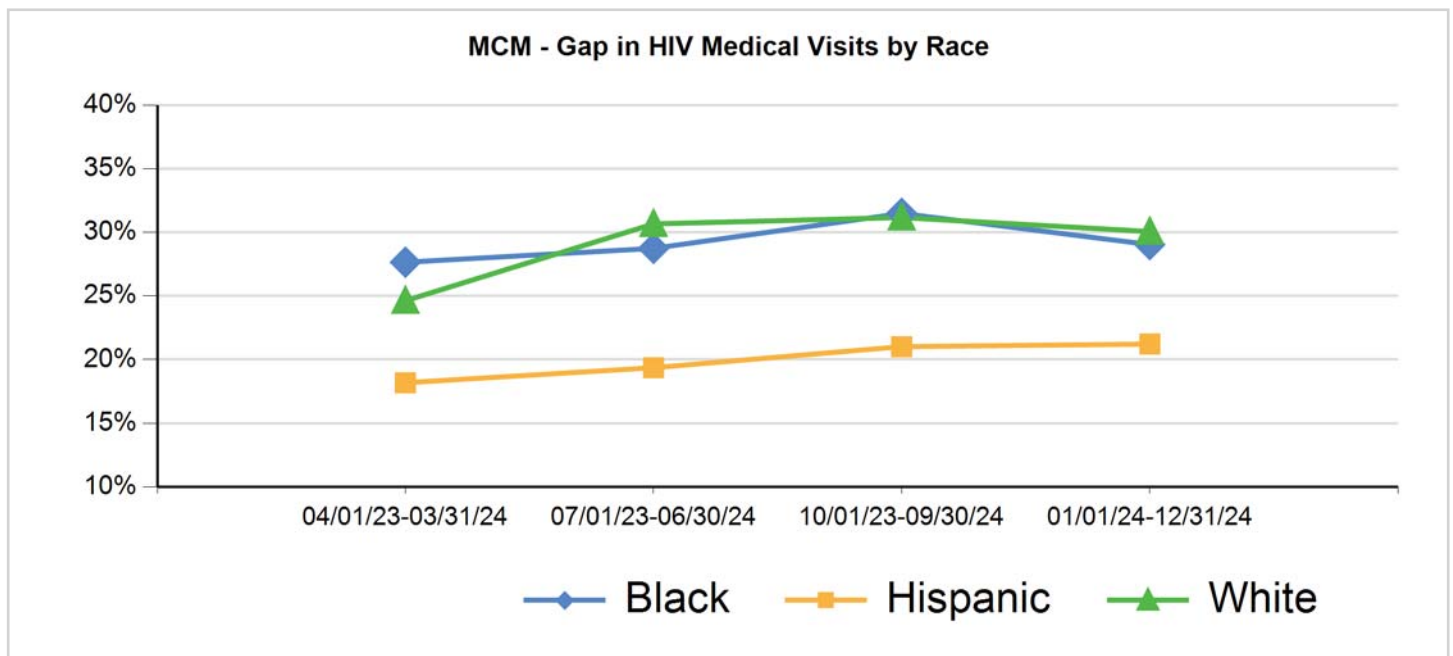
## OAMC - Annual Retention in Care by Agency



MCM - Gap in HIV Medical Visits				
	04/01/23-03/31/24	07/01/23-06/30/24	10/01/23-09/30/24	01/01/24-12/31/24
Number of clients in the denominator who did not have a medical visit in the last 6 months of the measurement year	358	421	458	423
Number of medical case management clients living with HIV who had at least one medical visit in the first 6 months of the measurement year	1,498	1,646	1,662	1,617
Percentage	23.9%	25.6%	27.6%	26.2%
Change from Previous Quarter Results	-0.9%	1.7%	2.0%	-1.4%

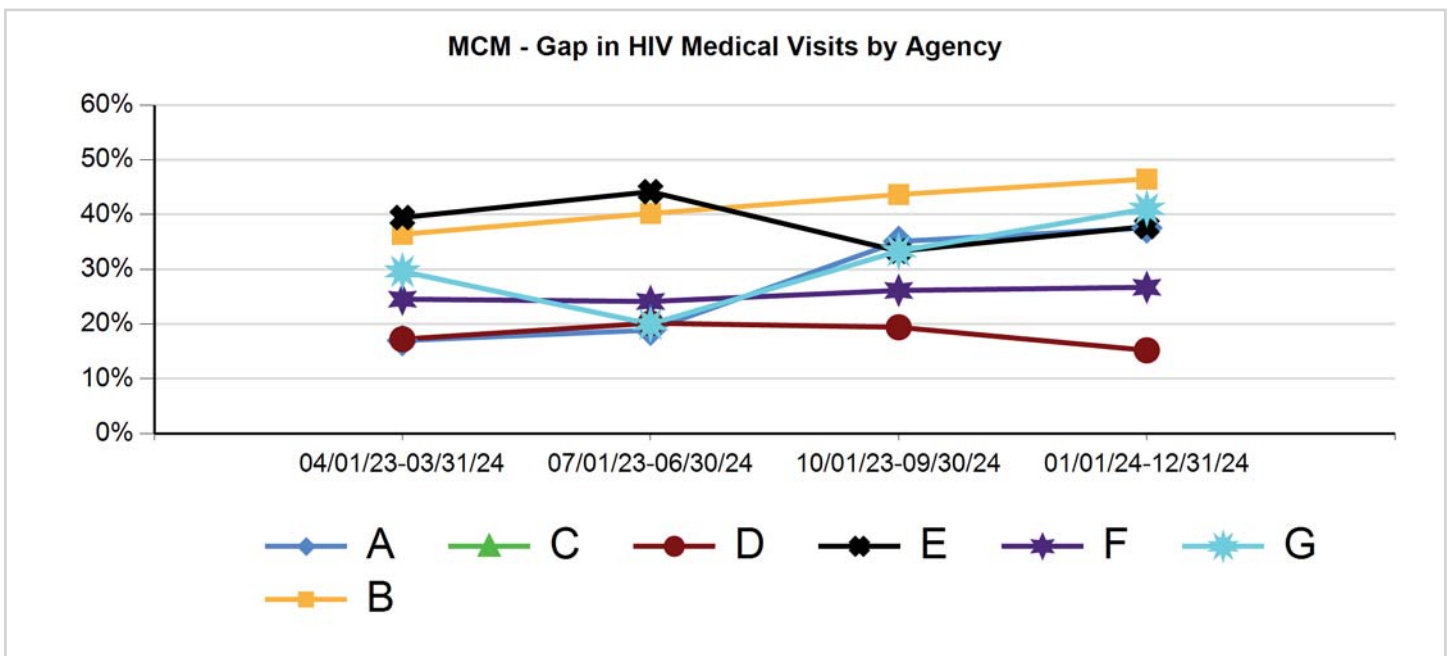


MCM - Gap in HIV Medical Visits by Race/Ethnicity									
	07/01/23-06/30/24			10/01/23-09/30/24			01/01/24-12/31/24		
	Black	Hisp	White	Black	Hisp	White	Black	Hisp	White
Number of clients in the denominator who did not have a medical visit in the last 6 months of the measurement year	240	122	46	268	132	48	239	132	46
Number of medical case management clients living with HIV who had at least one medical visit in the first 6 months of the measurement year	835	630	150	851	628	154	823	622	153
Percentage	28.7%	19.4%	30.7%	31.5%	21.0%	31.2%	29.0%	21.2%	30.1%
Change from Previous Quarter Results	1.1%	1.2%	6.0%	2.7%	1.7%	0.5%	-2.5%	0.2%	-1.1%

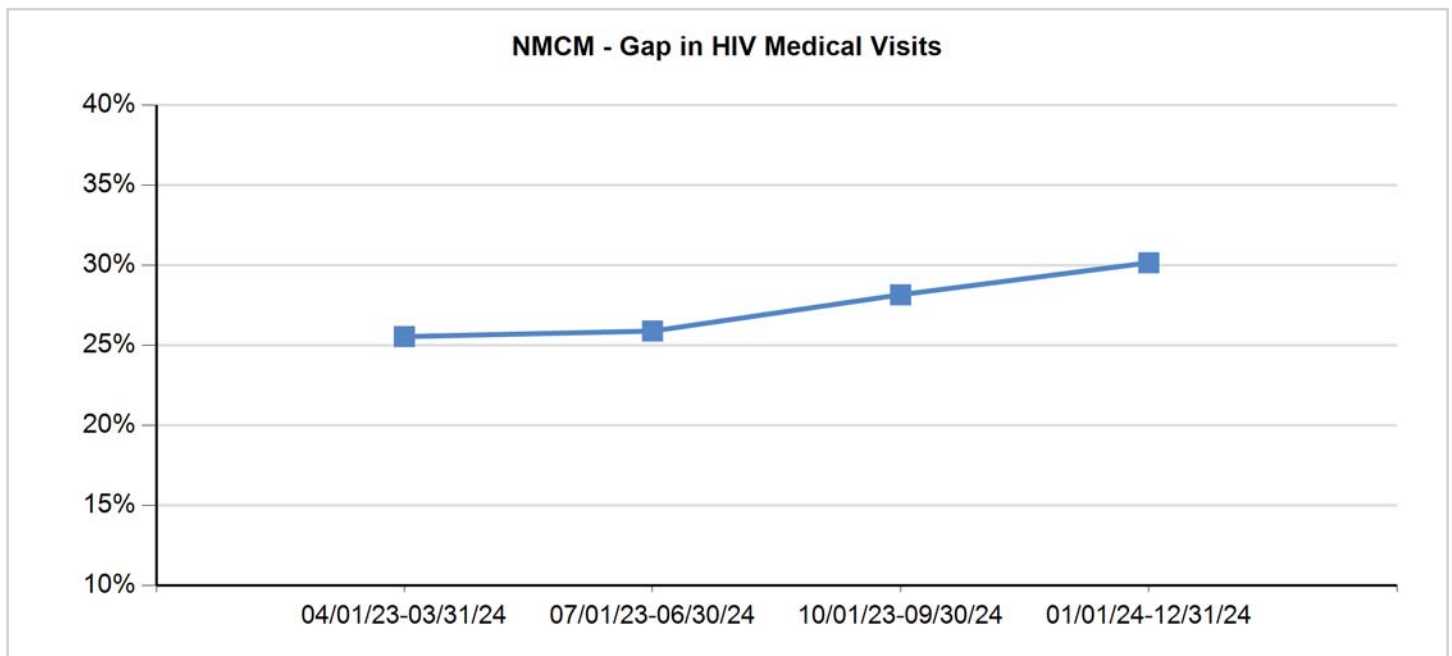




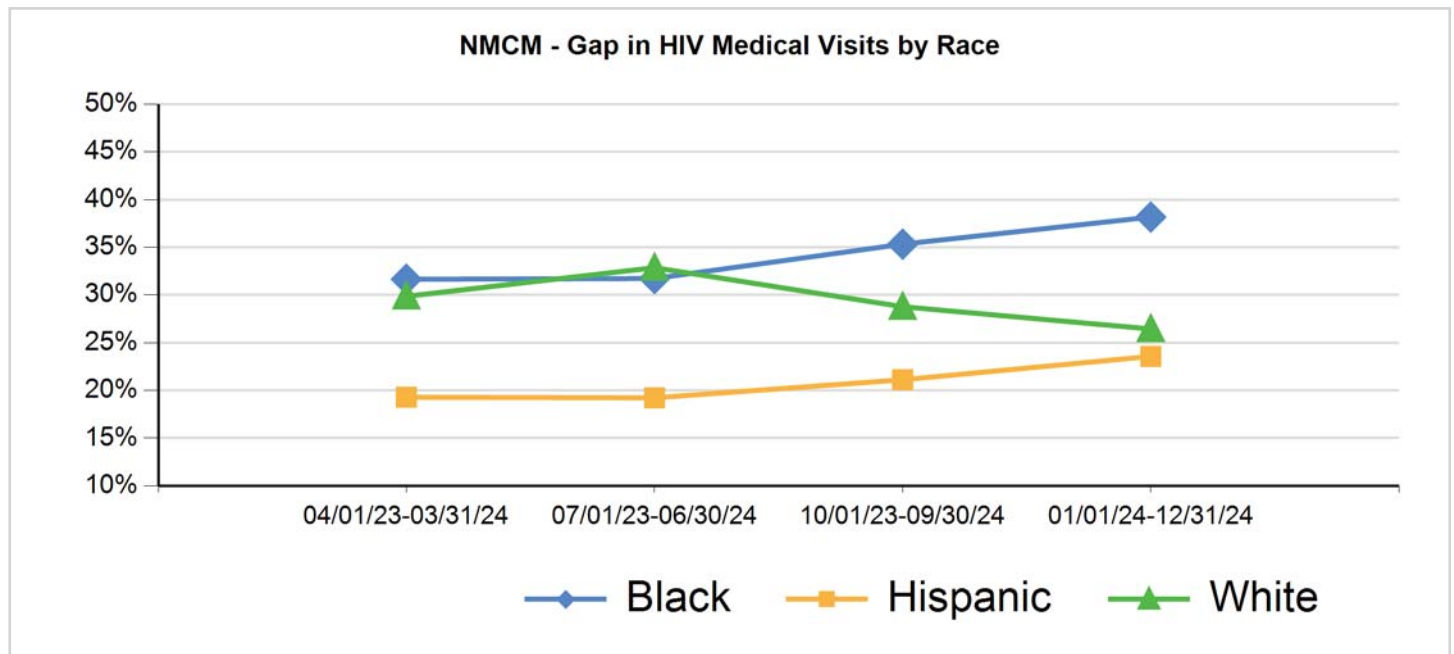
MCM - Gap in HIV Medical Visits by Agency														
	10/01/23 - 09/30/24							01/01/24 - 12/31/24						
	A	B	C	D	E	F	G	A	B	C	D	E	F	G
Number of clients in the denominator who did not have a medical visit in the last 6 months of the measurement year	53	159	0	162	13	68	17	59	146	0	131	14	62	23
Number of medical case management clients living with HIV who had at least one medical visit in the first 6 months of the measurement year	151	364	0	834	39	260	51	157	314	0	861	37	232	56
Percentage	35.1%	43.7%	NaN	19.4%	33.3%	26.2%	33.3%	37.6%	46.5%	NaN	15.2%	37.8%	26.7%	41.1%
Change from Previous Quarter Results	16.2%	3.5%	NaN	-0.8%	-10.9%	2.0%	13.3%	2.5%	2.8%	NaN	-4.2%	4.5%	0.6%	7.7%



NMCM - Gap in HIV Medical Visits				
	04/01/23 - 03/31/24	07/01/23 - 06/30/24	10/01/23 - 09/30/24	01/01/24 - 12/31/24
Number of clients in the denominator who did not have a medical visit in the last 6 months of the measurement year	903	899	991	1,020
Number of non medical case management clients living with HIV who had at least one medical visit in the first 6 months of the measurement year	3,536	3,473	3,520	3,383
Percentage	25.5%	25.9%	28.2%	30.2%
Change from Previous Quarter Results	-1.1%	0.3%	2.3%	2.0%



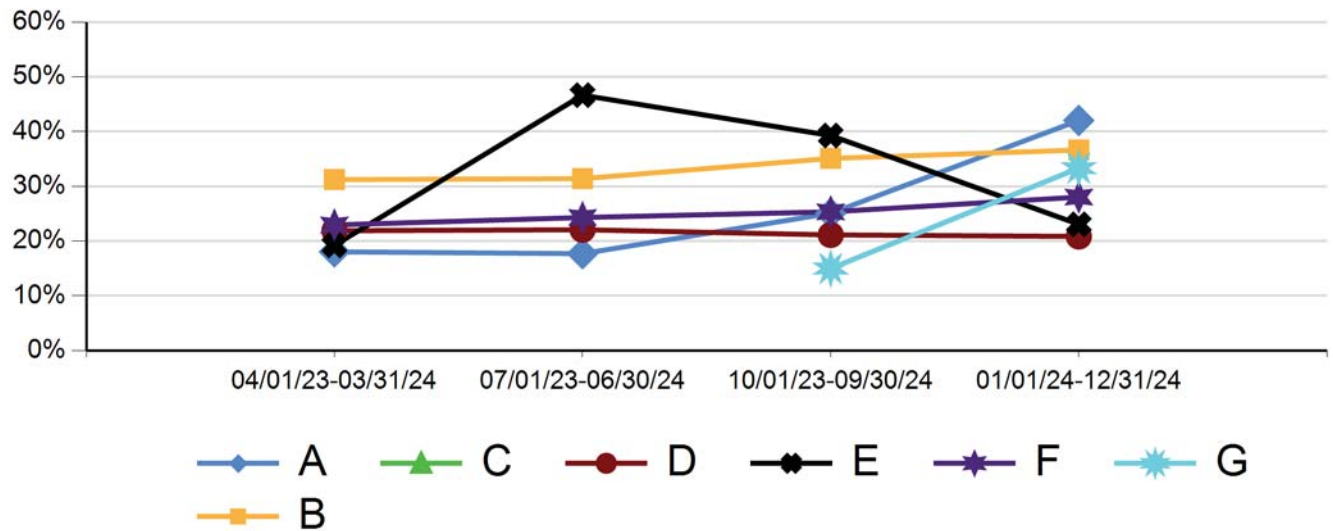
NMCM - Gap in HIV Medical Visits by Race/Ethnicity									
	07/01/23 - 06/30/24			10/01/23 - 09/30/24			01/01/24 - 12/31/24		
	Black	Hisp	White	Black	Hisp	White	Black	Hisp	White
Number of clients in the denominator who did not have a medical visit in the last 6 months of the measurement year	475	313	93	531	352	82	542	386	69
Number of non medical case management clients living with HIV who had at least one medical visit in the first 6 months of the measurement year	1,497	1,628	283	1,503	1,667	285	1,420	1,638	261
Percentage	31.7%	19.2%	32.9%	35.3%	21.1%	28.8%	38.2%	23.6%	26.4%
Change from Previous Quarter Results	0.1%	-0.1%	3.0%	3.6%	1.9%	-4.1%	2.8%	2.4%	-2.3%



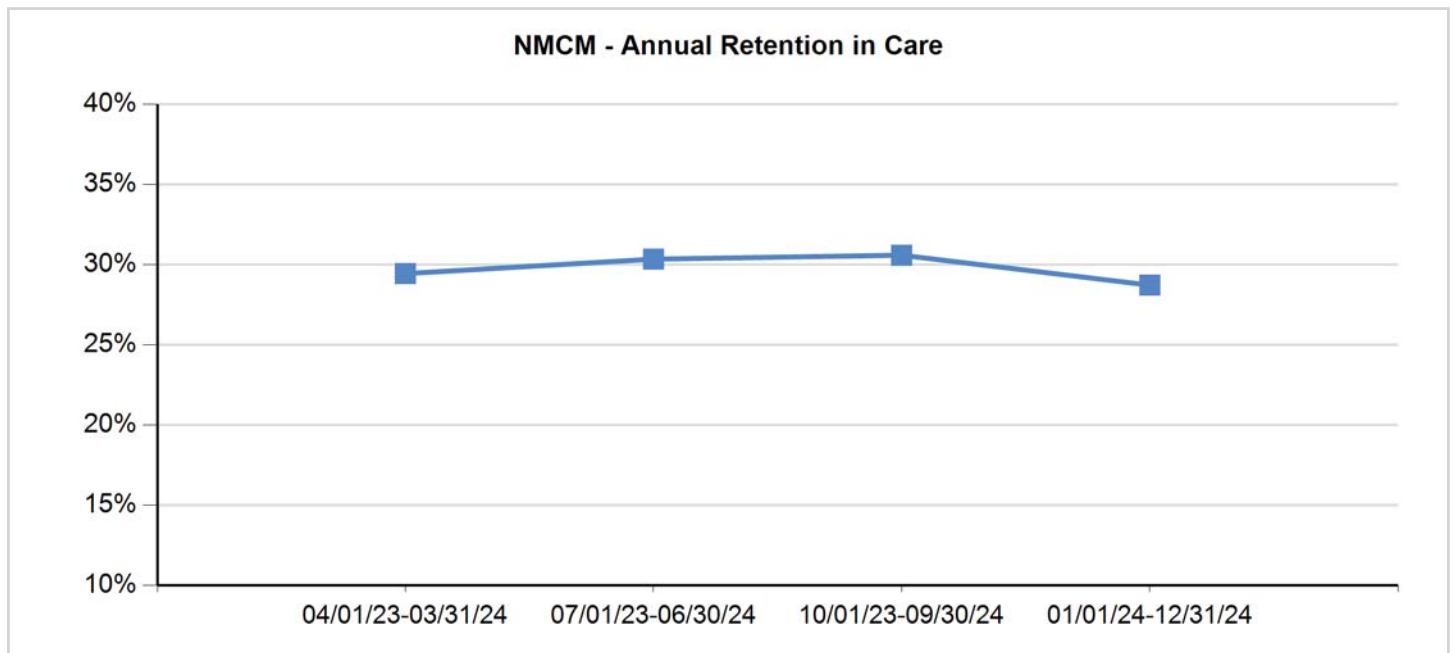
### NMCM - Gap in HIV Medical Visits by Agency

	10/01/23 - 09/30/24							01/01/24 - 12/31/24						
	A	B	C	D	E	F	G	A	B	C	D	E	F	G
Number of clients in the denominator who did not have a medical visit in the last 6 months of the measurement year	74	554	0	309	11	74	3	111	557	0	293	6	76	17
Number of non medical case management clients living with HIV who had at least one medical visit in the first 6 months of the measurement year	295	1,578	0	1,462	28	292	20	264	1,520	0	1,405	26	271	51
Percentage	25.1%	35.1%	NaN	21.1%	39.3%	25.3%	15.0%	42.0%	36.6%	NaN	20.9%	23.1%	28.0%	33.3%
Change from Previous Quarter Results	7.4%	3.7%	NaN	-0.9%	-7.4%	1.0%	NaN	17.0%	1.5%	NaN	-0.3%	-16.2%	2.7%	18.3%

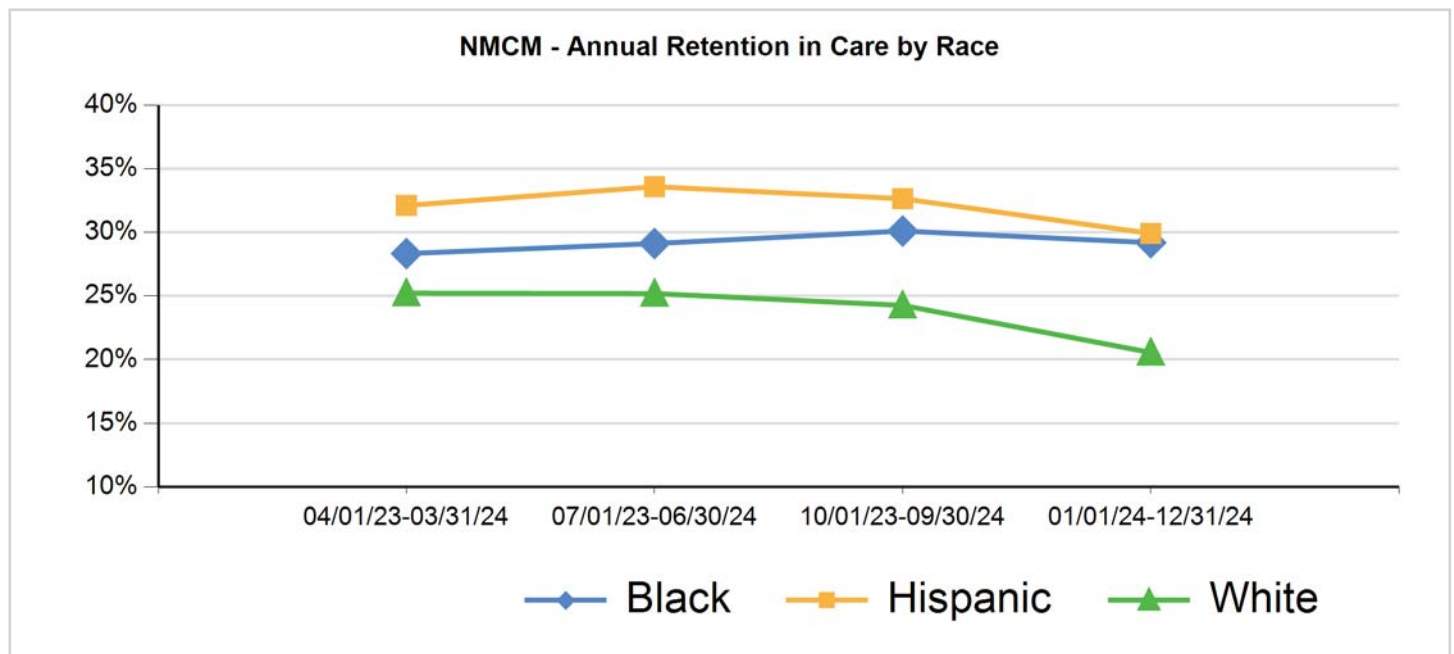
### NMCM - Gap in HIV Medical Visits by Agency



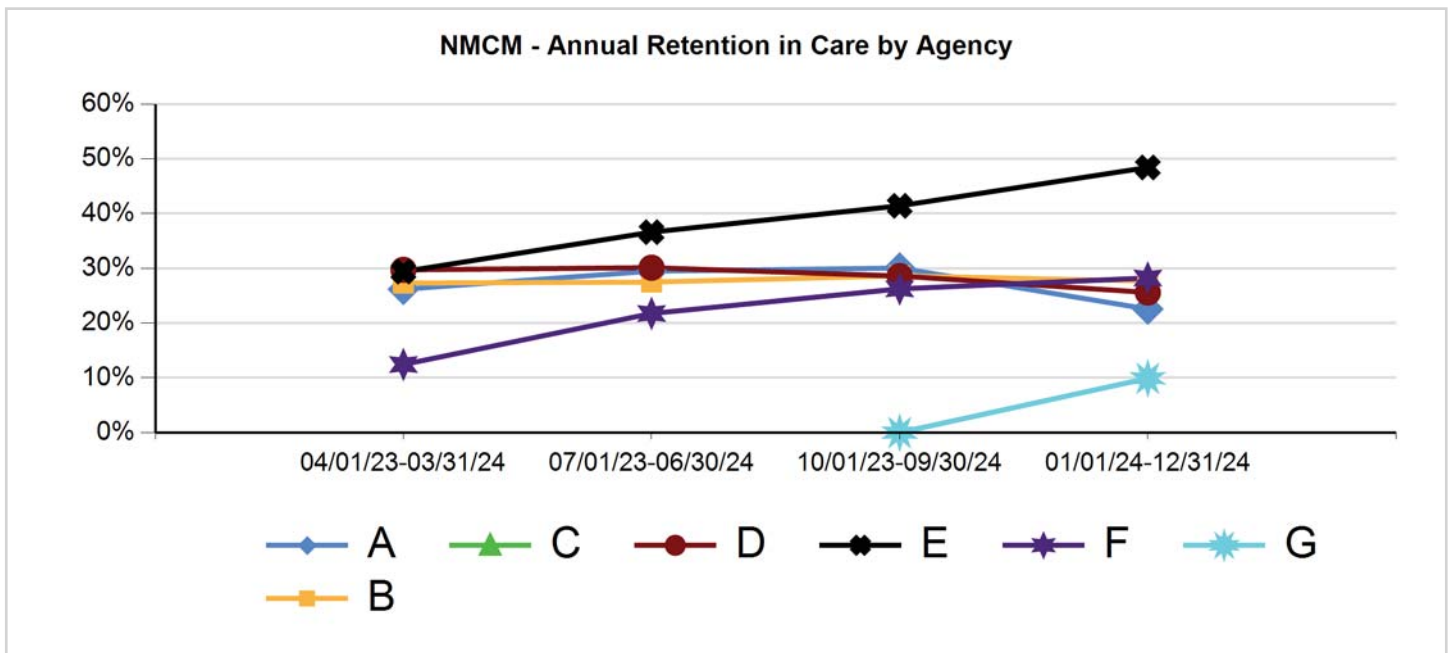
NMCM - Annual Retention in Care				
	04/01/23 - 03/31/24	07/01/23 - 06/30/24	10/01/23 - 09/30/24	01/01/24 - 12/31/24
Number of clients in the denominator who had at least two encounters at least 90 days apart within the measurement year.	2,184	2,228	2,186	2,025
Number of clients living with HIV who receive NMCM and had at least one encounter within the measurement year	7,420	7,344	7,148	7,052
Percentage	29.4%	30.3%	30.6%	28.7%
Change from Previous Quarter Results	0.3%	0.9%	0.2%	-1.9%



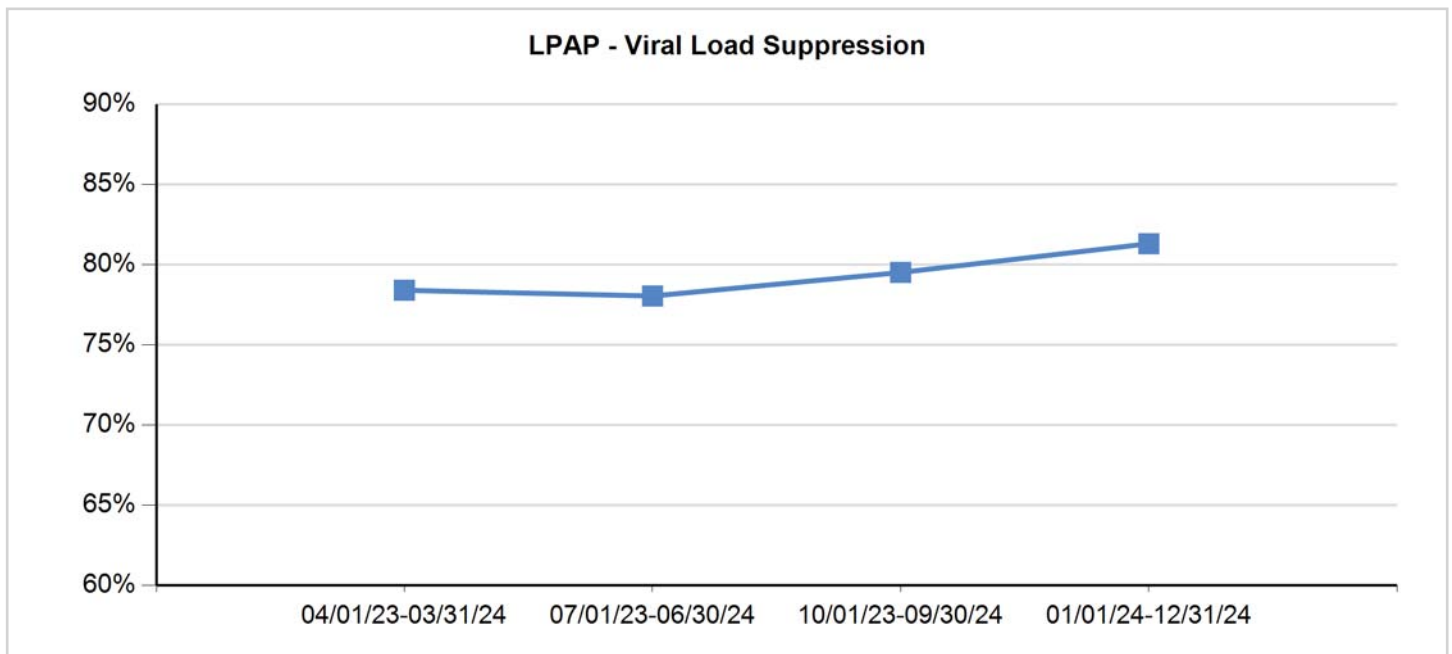
NMCM - Annual Retention in Care by Race/Ethnicity									
	07/01/23 - 06/30/24			10/01/23 - 09/30/24			01/01/24 - 12/31/24		
	Black	Hisp	White	Black	Hisp	White	Black	Hisp	White
Number of clients in the denominator who had at least two encounters at least 90 days apart within the measurement year.	1,121	909	164	1,120	875	148	1,069	788	126
Number of clients living with HIV who receive NMCM and had at least one encounter within the measurement year	3,849	2,706	651	3,720	2,680	610	3,662	2,634	613
Percentage	29.1%	33.6%	25.2%	30.1%	32.6%	24.3%	29.2%	29.9%	20.6%
Change from Previous Quarter Results	0.8%	1.5%	0.0%	1.0%	-0.9%	-0.9%	-0.9%	-2.7%	-3.7%



NMCM - Annual Retention in Care by Agency														
	10/01/23 - 09/30/24							01/01/24 - 12/31/24						
	A	B	C	D	E	F	G	A	B	C	D	E	F	G
Number of clients in the denominator who had at least two encounters at least 90 days apart within the measurement year.	116	1,042	0	793	29	125	0	86	997	0	675	31	135	12
Number of clients living with HIV who receive NMCM and had at least one encounter within the measurement year	386	3,638	0	2,772	70	476	44	381	3,601	0	2,637	64	478	121
Percentage	30.1%	28.6%	NaN	28.6%	41.4%	26.3%	0.0%	22.6%	27.7%	NaN	25.6%	48.4%	28.2%	9.9%
Change from Previous Quarter Results	0.6%	1.1%	NaN	-1.5%	4.8%	4.5%	NaN	-7.5%	-1.0%	NaN	-3.0%	7.0%	2.0%	9.9%

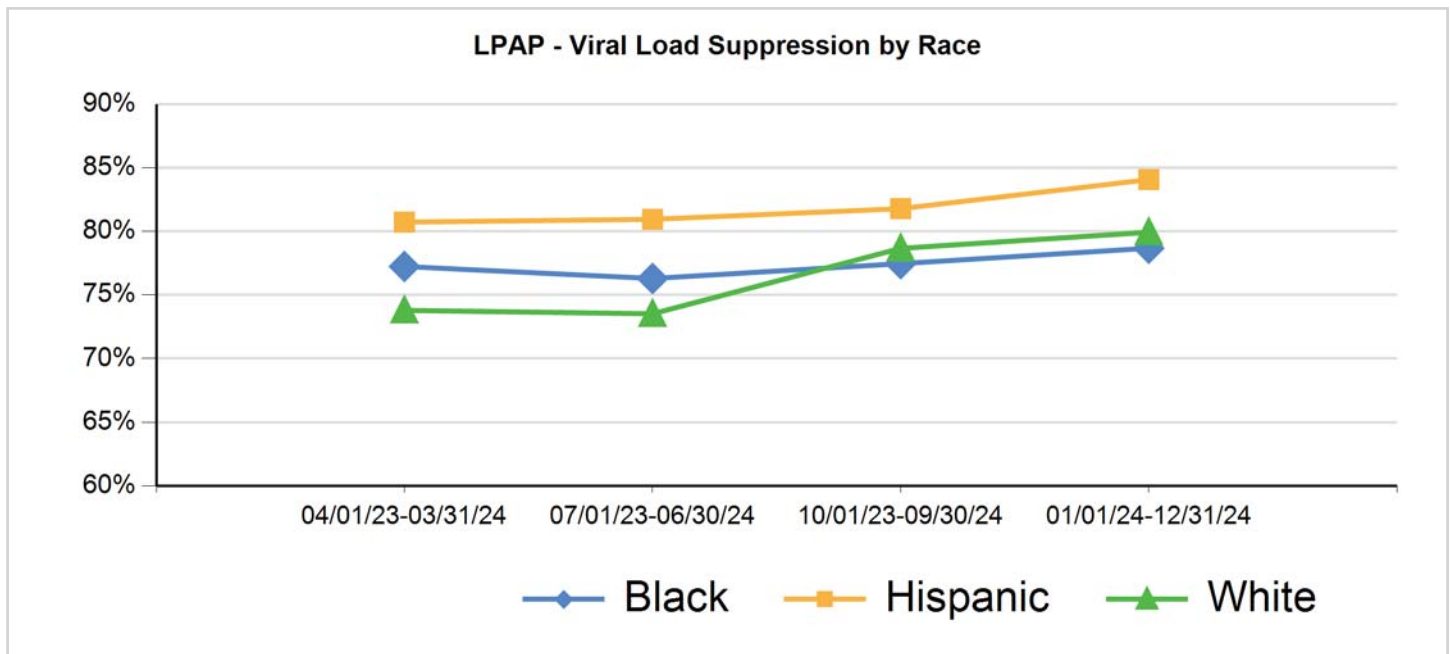


LPAP - Viral Load Suppression				
	04/01/23-03/31/24	07/01/23-06/30/24	10/01/23-09/30/24	01/01/24-12/31/24
Number of clients in the denominator with a HIV viral load less than 200 copies/ml at last HIV viral load test during the measurement year	3,117	3,134	3,119	3,117
Number of clients living with HIV, with 1 or more Local Pharmaceutical Assistance Program encounters in the measurement year	3,976	4,016	3,923	3,834
Percentage	78.4%	78.0%	79.5%	81.3%
Change from Previous Quarter Results	-3.1%	-0.4%	1.5%	1.8%





LPAP - Viral Load Suppression by Race/Ethnicity									
	07/01/23-06/30/24			10/01/23-09/30/24			01/01/24-12/31/24		
	Black	Hisp	White	Black	Hisp	White	Black	Hisp	White
Number of clients in the denominator with a HIV viral load less than 200 copies/ml at last HIV viral load test during the measurement year	1,413	1,428	236	1,375	1,446	236	1,332	1,483	239
Number of clients living with HIV, with 1 or more Local Pharmaceutical Assistance Program encounters in the measurement year	1,852	1,764	321	1,775	1,768	300	1,693	1,764	299
Percentage	76.3%	81.0%	73.5%	77.5%	81.8%	78.7%	78.7%	84.1%	79.9%
Change from Previous Quarter Results	-0.9%	0.2%	-0.3%	1.2%	0.8%	5.1%	1.2%	2.3%	1.3%



LPAP - Viral Load Suppression by Agency														
	10/01/23-09/30/24							01/01/24-12/31/24						
	A	B	C	D	E	F	G	A	B	C	D	E	F	G
Number of clients in the denominator with a HIV viral load less than 200 copies/ml at last HIV viral load test during the measurement year	435	717	0	1,268	52	718	0	425	725	0	1,297	50	691	0
Number of clients living with HIV, with 1 or more Local Pharmaceutical Assistance Program encounters in the measurement year	541	874	0	1,700	62	823	0	519	891	0	1,657	57	790	0
Percentage	80.4%	82.0%	NaN	74.6%	83.9%	87.2%	0.0%	81.9%	81.4%	NaN	78.3%	87.7%	87.5%	0.0%
Change from Previous Quarter Results	0.4%	-0.8%	NaN	2.9%	-6.3%	2.1%	NaN	1.5%	-0.7%	NaN	3.7%	3.8%	0.2%	NaN

