

**Houston Area HIV Services Ryan White Planning Council  
Office of Support  
1440 Harold Street, Houston, Texas 77006  
832 927-7926 telephone; <http://rwpchouston.org>**

**Memorandum**

To: Members, Affected Community Committee

Johnny Deal, Co-Chair	Cecilia Ligons	<i>Kakeshia Locks</i>
Carol Suazo, Co-Chair	Tana Pradia	<i>Calvin Mills</i>
Servando Arellano	Ryan Rose	<i>LeeAnn Moody</i>
Skeet Boyle	<i>Rodrigo Arias</i>	<i>Veria Steptoe</i>
Caleb Brown	<i>Diondra English</i>	<i>Tyronika Tates</i>
Tony Crawford	<i>Ronnie Galley</i>	<i>Reynauld White</i>
Kathryn Fergus		

Members, Consumer & Community Engagement Education Workgroup

Adonis May	Calvin Vannoy	Pieus Bowser
Cydney Clay	Damion Sam	Rodney Mills
Richon Ohafia	Ocran Holloway	Robert Williams
Abraham Arguello	Omar Navarro	Tyvance Credit

Cc: Josh Mica                      Sha'Terra Johnson  
Mauricia Chatman            Reachelian Ellison  
Cydney Clay                     Richon Ohafia

From: Tori Williams, Director, Ryan White Office of Support

Date: Tuesday, September 17, 2024

Re: Meeting Notice

---

Please join us for a joint meeting of the Affected Community Committee and the EHE/Integrated Plan Consumer and Community Engagement Education Workgroup. Details are as follows:

**Affected Community and Consumer & Community Engagement Meeting  
11:00 a.m., Monday, September 23, 2024**

**Sandwiches will be provided to those who attend in person & have a medical need**

**Virtually:** Click on the following link to join the meeting:

<https://us02web.zoom.us/j/81032740414?pwd=V1hTMnltaklDanBDNU9XYkVkdllITZz09>

Meeting ID: 810 3274 0414

Passcode: 125162

Or, use your telephone to dial in: 346 248 7799

**In-person location:** Bering Church 1440 Harold Street, 2<sup>nd</sup> floor, Houston, Texas 77006  
(Please park and use the entrance behind the church facing Hawthorne Street)

Please be sure to contact Rod to tell her if you will be attending in person, virtually or not at all. She can be reached at: [Rodriga.Avila@harriscountytx.gov](mailto:Rodriga.Avila@harriscountytx.gov) or by telephone at 832 927-7926. We look forward to seeing you next Monday!

# Houston Area HIV Services Ryan White Planning Council

## Affected Community Committee and Consumer & Community Engagement Workgroup Meeting

11:00 a.m., Monday, September 23, 2024

**In-person meeting location: Bering Church** 1440 Harold Street, 2nd floor, Houston, Texas 77006. Please park and use the building entrance behind the church facing Hawthorne Street.

Or, join us via Zoom at:

<https://us02web.zoom.us/j/81032740414?pwd=V1hTMnltaklDanBDNU9XYkVkdllITZz09>

Meeting ID: 810 3274 0414

Passcode: 125162

Or, use your telephone to dial in: 346 248 7799

### AGENDA

*Please note that the use of artificial intelligence (AI) is prohibited at Ryan White sponsored meetings.*

- I. Call to Order Johnny Deal and  
Carol Suazo, Co-Chairs
  - A. Welcome and Moment of Reflection
  - B. Announce who will be chairing the meeting
  - C. Adoption of the Agenda
  - D. Approval of the Minutes
  
- II. Public Comment  
(NOTE: If you wish to speak during the Public Comment portion of the meeting, please sign up on the clipboard at the front of the room. No one is required to give his or her name or HIV status. All meetings are audio taped by the Office of Support for use in creating the meeting minutes. The audiotape and the minutes are public record. If you state your name or HIV status it will be on public record. If you would like your health status known, but do not wish to state your name, you can simply say: "I am a living person with HIV", before stating your opinion. If you represent an organization, please state that you are representing an agency and give the name of the organization. If you work for an organization, but are representing yourself, please state that you are attending as an individual and not as an agency representative. Individuals can also submit written comments to a member of the staff who would be happy to read the comments on behalf of the individual at this point in the meeting.)
  
- III. Old Business Ronnie Galley  
Rod Avila  
Skeet Boyle  
Tori Williams
  - A. Road 2 Success:
    - 1. Friendly Haven on 09/20/24
    - 2. Salvation After HIV Event Info
  - B. College Survey
  - C. Training: Standards of Care
  
- IV. New Business Tori Williams
  - A. Speakers at meetings vs. attending workgroup meetings
  
- V. Announcements
  
- VI. Adjourn Johnny Deal
  - Optional: Members meet with committee mentor

**LIST OF VOLUNTEERS CALLING UNIVERSITIES AND COLLEGES – AS OF 08-02-24**

VOLUNTEER	COLLEGE OR UNIVERSITY	NOTES
Skeet	Steven F. Austin	
	Texas A&M College of the Mainland	
	HCC Downtown	
	U of H Downtown	
	HCC Stafford	
	Prairie View A&M	
	U of H Clearlake	
	University of St Thomas	
	San Jacinto College	
	University of St Thomas	
	Alvin Community College	
	Houston Christian University	
Kathryn	Texas Southern University	
	University of Houston	
	University of Texas Health	
	Baylor College	
	Rice University	
Kesh		
Diondra	Lone Star	
	Blinn	
	Lee College	
	Wharton County	
Ryan		



WIKIPEDIA  
The Free Encyclopedia

# List of colleges and universities in Houston

The following is a **list of colleges and universities in Houston**, located within the city limits.

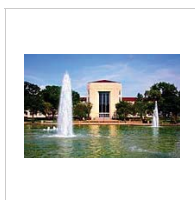
## State universities

Four separate and distinct state universities are located in Houston.

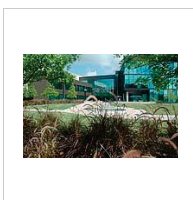
The University of Houston is the flagship institution of the University of Houston System. The University of Houston–Clear Lake and the University of Houston–Downtown are stand-alone universities; they are not branch campuses of the University of Houston. Admission into each institution is separate, and each institution has distinct admission criteria and requirements.

Texas Southern University is the only independent state university in Houston and is one of the largest historically black universities in the U.S.

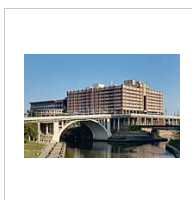
Institution	Founded	Enrollment (Fall 2012)	Campus acreage	Freshman acceptance rate <sup>[1]</sup> (Fall 2012)	Endowment	Research expenditures (FY 2011)	Carnegie classification <sup>[2]</sup>	U.S. News Ranking
<b>University of Houston</b> 4800 Calhoun Rd	1927	40,747	667	55.9%	\$590 million <sup>[3]</sup>	\$128 million <sup>[3]</sup>	Research (Very High)	National Universities, No. 171 (Tier 1) <sup>[4]</sup>
<b>University of Houston–Clear Lake</b> 2700 Bay Area Blvd	1971	8,153	524	N/A	\$22.6 million <sup>[5]</sup>	\$2.2 million <sup>[5]</sup>	Master's (Large)	Regional Universities, Tier 2 <sup>[6]</sup>
<b>University of Houston–Downtown</b> 1 Main St	1974	13,916	20	90.3%	\$34.7 million <sup>[7]</sup>	\$1.5 million <sup>[7]</sup>	Baccalaureate–Diverse	Regional Colleges, Tier 2 <sup>[8]</sup>
<b>Texas Southern University</b> 3100 Cleburne St	1927	9,646	150	87.3%	\$48.7 million <sup>[9]</sup>	N/A	Doctoral/Research	National Universities, Tier 2 <sup>[10]</sup>



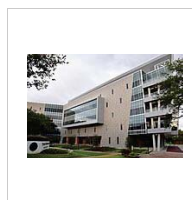
University of Houston



UH–Clear Lake



UH–Downtown



Texas Southern Univ.

## Community colleges

### Colleges in or nearby Houston

- [Houston Community College System](#)
- [Lone Star College System](#)
- [San Jacinto College](#)

### Other Community Colleges around Houston

- [Alvin Community College](#)
- [Blinn College](#)
- [Brazosport College](#)
- [College of the Mainland](#)
- [Lee College](#)
- [Wharton County Junior College](#)

## Private universities

### Nonsectarian

- [Rice University](#), established in 1912, is a private Tier One research university located at 6100 Main, Houston, Texas.<sup>[11][12]</sup> Rice enrolled 3,001 undergraduate, 897 post-graduate, and 1,247 doctoral students and awarded 1,448 degrees in 2007. The university is organized into eight schools offering 40 undergraduate degree programs,<sup>[13]</sup> 51 masters programs, and 29 doctoral programs.<sup>[14][15]</sup>
- [Strayer University](#), established in 1892, is a private college offering associate's, bachelor's and master's degree programs. There are 3 campuses in the Houston area offering both on campus and online class options.<sup>[16]</sup>
- [Houston Graduate School of Theology](#)
- [North American University](#), established in 2007, is a private college offering bachelor's degree programs in three disciplines: computer science, business administration and education.<sup>[17]</sup>
- [American InterContinental University](#), 9999 Richmond Avenue, Houston, Texas, offers 2 associate degree programs, 24 bachelor programs, and 11



Rice University

masters programs in 5 disciplines: business administration, accounting, criminal justice, healthcare management and information technology.<sup>[18]</sup>

### Sectarian

- The College of Biblical Studies, 7000 Regency Square Blvd., Houston, Texas, is a Bible college that is non-denominational. It is dual-accredited by SACS-COC and ABHE and was founded in 1976 by Rev. Ernest L. Mays. The school continues to strive to equip African American and other ethnic minority pastors to serve the church and the world through both English- and Spanish-language undergraduate degree offerings.<sup>[19][20]</sup>
- Houston Christian University, 7502 Fondren Road, Houston, Texas, offers more than 50 undergraduate majors. Pre-professional programs range from Biblical languages to nursing.<sup>[21]</sup>
- University of St. Thomas, located at 3800 Montrose, Houston, Texas, is a comprehensive Catholic university, grounded in the liberal arts. Founded by 1947 by Basilian Fathers, it serves as the only Catholic university in the Archdiocese of Galveston-Houston.<sup>[22]</sup>

## Law schools

### Public

- Texas Southern University, Thurgood Marshall School of Law
- University of Houston Law Center

### Private

- South Texas College of Law



University of Houston Law Center

## Independent schools

- Center for Advanced Legal Studies

## Health institutions

### Public

- Institute of Biosciences and Technology
- Prairie View A&M University College of Nursing
- Texas Southern University School of Pharmacy and Health Science
- Texas Woman's University Health Science Center Houston
- University of Houston College of Medicine
- University of Houston College of Optometry
- University of Houston College of Pharmacy
- The University of Texas Health Science Center at Houston
- MD Anderson Cancer Center

### Private

- Baylor College of Medicine
- Memorial Hermann Clinical Innovation and Research Institute (CIRI)<sup>[23]</sup>
- The Methodist Hospital Research Institute<sup>[24]</sup>
- Texas Children's Hospital



Baylor College of Medicine (BCM) is ranked among the top schools of medicine in the United States.

## Former institutions

- Christian College of America<sup>[25]</sup>
- Gulf Coast Bible College (moved to Oklahoma City, Oklahoma in 1985)<sup>[25]</sup>
- South Texas Junior College

## See also

- List of colleges and universities in Texas

## References

- ↑ "Online Institutional Resumes" (http://www.thecb.state.tx.us/apps/resume/s/). Texas Higher Education Coordinating Board. Retrieved 2013-08-05.
- ↑ (http://classifications.carnegiefoundation.org/lookup\_listings/srp.php?clq={%22first\_letter%22:%22U%22}&limit=100,50&orderby=sortname&start\_page=institution.php) Carnegie Foundation University Classification | accessdate = 2011-02-06
- ↑ "University of Houston Progress Card" (http://www.uhsa.uh.edu/chancellor/strategic-direction/strategic-documents/UH%202011-12%20Progress%20Card.pdf) (PDF). University of Houston System. Retrieved 2011-11-18.
- ↑ "2013 Best Colleges: University of Houston" (http://colleges.usnews.rankingsandreviews.com/best-colleges/university-of-houston-3652). *U.S. News & World Report*. Retrieved September 11, 2013.
- ↑ "University of Houston–Clear Lake Progress Card" (http://www.uhsa.uh.edu/chancellor/strategic-direction/strategic-documents/UHCL%202011-12%20Progress%20Card.pdf) (PDF). University of Houston System. Retrieved 2011-11-18.
- ↑ "2013 Best Colleges: University of Houston–Clear Lake" (http://colleges.usnews.rankingsandreviews.com/best-colleges/university-of-houston-clear-lake-11711). *U.S. News & World Report*. Retrieved September 11, 2013.

7. "University of Houston–Downtown Progress Card" (<http://www.uhsa.uh.edu/chancellor/strategic-direction/strategic-documents/UHD%202011-12%20Progress%20Card.pdf>) (PDF). University of Houston System. Retrieved 2011-11-18.
8. "2013 Best Colleges: University of Houston–Downtown" (<http://colleges.usnews.rankingsandreviews.com/best-colleges/university-of-houston-downtown-12826>). *U.S. News & World Report*. Retrieved September 11, 2013.
9. "HBCU Money's 2015 Top 10 HBCU Endowments" (<http://hbcumoney.com/2016/02/02/2015-hbcu-endowments/>). HBCU Money. 2016-02-02. Retrieved 2019-10-20.
10. "2013 Best Colleges: Texas Southern University" (<http://colleges.usnews.rankingsandreviews.com/best-colleges/texas-southern-university-3642>). *U.S. News & World Report*. Retrieved September 11, 2013.
11. Rice University (<http://www.rice.edu/>)
12. "Rice University - Best Colleges - Education - *U.S. News & World Report*" (<https://web.archive.org/web/20090216191034/http://colleges.usnews.rankingsandreviews.com/college/items/3604>). Archived from the original (<http://colleges.usnews.rankingsandreviews.com/college/items/3604>) on 2009-02-16. Retrieved 2008-12-24.
13. "Majors and Programs of Study" ([https://web.archive.org/web/20090112061620/http://www.futureowls.rice.edu/futureowls/Majors\\_and\\_Programs\\_of\\_Study.asp](https://web.archive.org/web/20090112061620/http://www.futureowls.rice.edu/futureowls/Majors_and_Programs_of_Study.asp)). Rice University. Archived from the original ([http://www.futureowls.rice.edu/futureowls/Majors\\_and\\_Programs\\_of\\_Study.asp](http://www.futureowls.rice.edu/futureowls/Majors_and_Programs_of_Study.asp)) on 2009-01-12. Retrieved 2008-11-22.
14. "Information for Graduate Students" ([https://web.archive.org/web/20110607174336/http://www.rice.edu/catalog/2008\\_2009/PDF/08\\_GraduateInfo.pdf](https://web.archive.org/web/20110607174336/http://www.rice.edu/catalog/2008_2009/PDF/08_GraduateInfo.pdf)) (PDF). Rice University. Archived from the original ([http://www.rice.edu/catalog/2008\\_2009/PDF/08\\_GraduateInfo.pdf](http://www.rice.edu/catalog/2008_2009/PDF/08_GraduateInfo.pdf)) (PDF) on 2011-06-07. Retrieved 2008-11-22.
15. "Rice Facts - Academic Schools" ([http://www.professor.rice.edu/professor/Academic\\_Schools.asp](http://www.professor.rice.edu/professor/Academic_Schools.asp)). Rice University. Retrieved 2008-11-22.
16. "Strayer University: Accredited Online University" (<http://www.strayer.edu>). Strayer.edu. Retrieved 2019-10-20.
17. North American College (<http://www.northamerican.edu/>) Archived (<http://web.archive.org/web/20111016033006/http://www.northamerican.edu/>) 2011-10-16 at the Wayback Machine
18. "Houston Campus" (<http://www.aiuniv.edu/campus-locations/houston>). *www.aiuniv.edu*. Retrieved 2017-06-01.
19. "Degree Programs" (<http://www.cbshouston.edu/academic-programs>). College of Biblical Studies. Retrieved 2015-10-05.
20. Contact CBS (<https://apply.cbshouston.edu/>)
21. HBU – Visit HBU (<https://www.hbu.edu/admissions/visit-hbu/>)
22. Contact UST (<http://www.stthom.edu/About/Contact-Us/Index.aqf>)
23. memorialhermann.org (<http://memorialhermann.org/servicesandprograms/clinicalinnovationandresearchinstitute/>)
24. 15261\_Meth\_TMHR1\_PROD.indd ([http://www.methodisthealth.com/documents/15261\\_Meth\\_TMHR1\\_new.pdf](http://www.methodisthealth.com/documents/15261_Meth_TMHR1_new.pdf))
25. Moore, Louis. "Ecumenism the byword on high-rise college campus ([http://www.chron.com/CDA/archives/archive.mpl/1985\\_35005/ecumenism-the-byword-on-high-rise-college-campus.html](http://www.chron.com/CDA/archives/archive.mpl/1985_35005/ecumenism-the-byword-on-high-rise-college-campus.html))." *Houston Chronicle*. Saturday August 31, 1985. Religion 1. Retrieved on September 25, 2011.

---

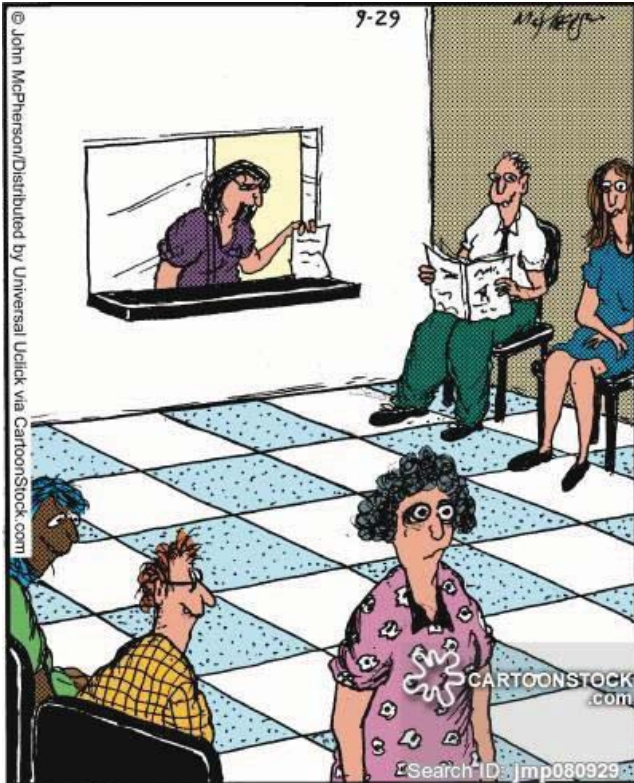
Retrieved from "https://en.wikipedia.org/w/index.php?title=List\_of\_colleges\_and\_universities\_in\_Houston&oldid=1179007769"

# Consumer Training on Standards of Care



Affected Community Committee Meeting  
September 2024

**General Standard 3.2:** “Agency has Policy and Procedure regarding client Confidentiality [...] Providers must implement mechanisms to ensure protection of clients’ confidentiality in all processes throughout the agency.”



“Mrs. Cranley! You need to sign this HIPAA privacy form before the doctor can look at those warts on your stomach!”



All our nurses now have degrees...unfortunately nurse Pilbright's is in the expressive arts!

**Primary Medical Care 1.1:** “Medical care for HIV infected persons shall be provided by MD, NP, CNS or PA licensed in the State of Texas and has at least two years paid experience in HIV/AIDS care including fellowship.”

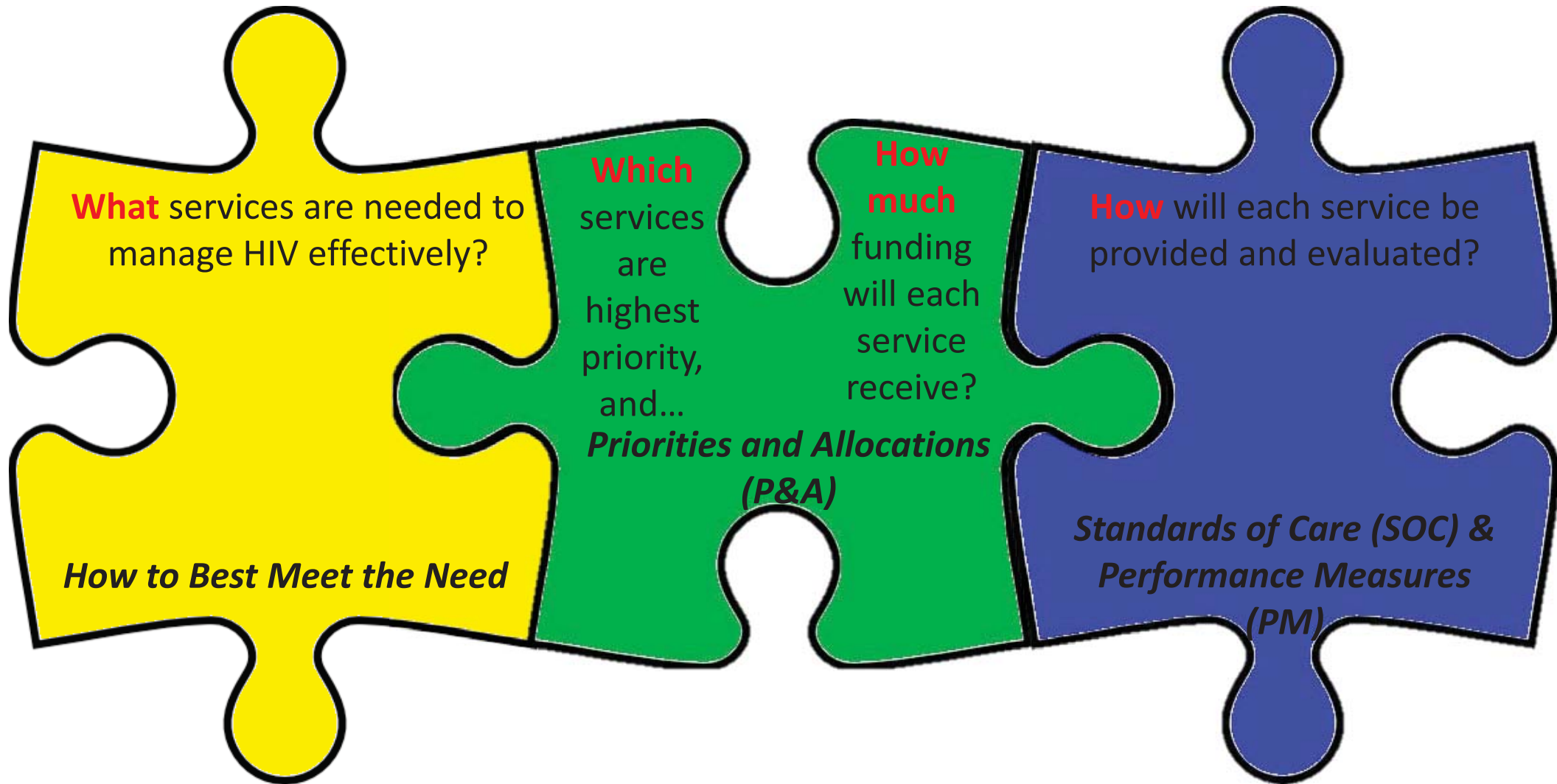
**Oral Health 2.8:** “Oral hygiene instructions (OHI) should be provided annually to each client.”



To help emphasize good oral hygiene in kids, Dr. Remford installed a dental floss zipline in his office.



# Components of the Process



**What** services are needed to manage HIV effectively?

**Which** services are highest priority, and...

*Priorities and Allocations (P&A)*

*How to Best Meet the Need*

**How** much funding will each service receive?

**How** will each service be provided and evaluated?

*Standards of Care (SOC) & Performance Measures (PM)*

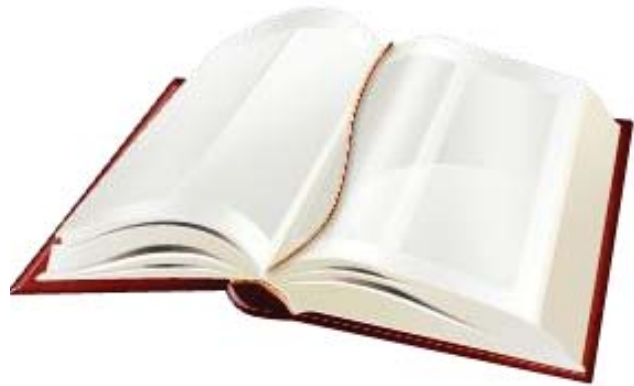


# Houston Has Standards!

*If you were planning on buying a car, what are some basic features you would expect to “come standard” with a good quality car?*

- A working engine
- Steering wheel
- Brakes
- Seatbelts
- Air conditioner – A must-have in Houston!

Just as you would expect basic features to “come standard” when buying a car, you can also expect basic levels of quality to “come standard” with HIV care services in Houston. We call these Standards of Care (SOC).



# Official Definitions

- **Standard of Care (SOC)**

A *statement* of the minimal acceptable levels of quality in HIV service delivery by Ryan White funded providers in a local jurisdiction.

- **Performance Measure (PM)**

A *measurement* of the impact of HIV care, treatment, and support services provided by Ryan White funded providers in a local jurisdiction.

# A Little Background on SOC...



- First developed in 1999 as a way to monitor provider contracts
- Every year since, workgroups are held to review the Standards with the community that include physicians, nurses, case managers, administrators, and consumers
- Based on
  1. Accepted industry guidelines
  2. On-site program monitoring results, and
  3. Provider and consumer input
- Apply to services funded by Ryan White Parts A and B, and State Services.
- Maintained by the Administrative Agents (AAs)
  - RW/A = Ryan White Grant Administration
  - RW/B and State Services = The HIV Resource Group



## What SOC Are

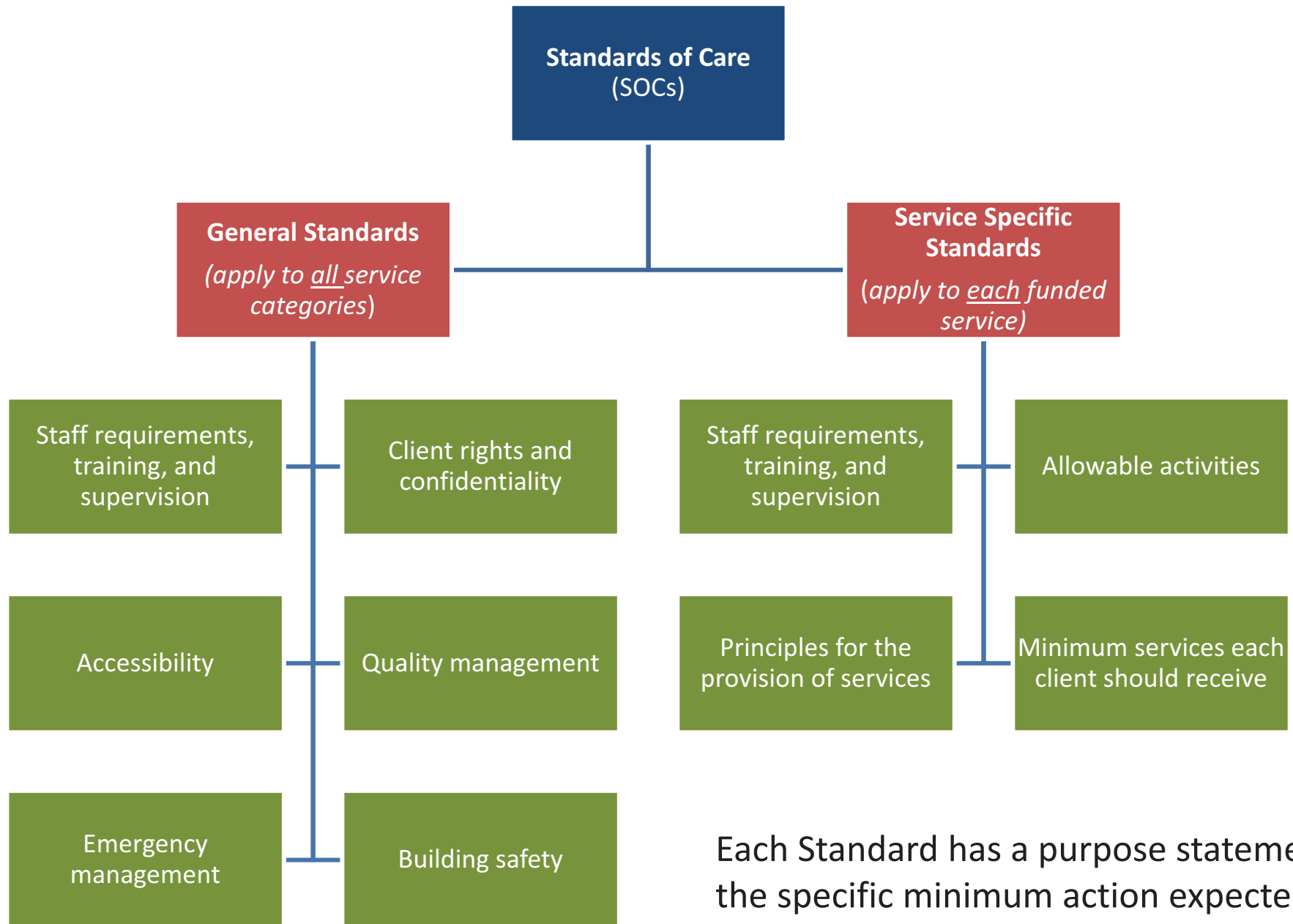
- A way of letting providers and consumers know what constitutes quality care and services for PLWHA
- A tool for making sure Ryan White-funded services are delivered according to minimum industry standards and guidelines
- One of many data sources for measuring how well Ryan White-funded services are meeting overall community goals



## What SOC Aren't

- A way to evaluate how a specific Ryan White-funded agency conducts business (*Agency monitoring is done by the AAs*)
- A way to decide which agency in Houston gets Ryan White money (*RFPs and agency contracts are coordinated by the AAs*)
- Guidelines for HIV services provided by *non-Ryan White-funded* agencies

# Organization of the SOCs



Each Standard has a purpose statement, the specific minimum action expected, and a way to measure it.

## GENERAL STANDARDS

	Standard	Measure
1.0	<b>Staff Requirements</b>	
1.1	<p><u>Staff Screening (Pre-Employment)</u>            Staff providing services to clients shall be screened for appropriateness by provider agency as follows:</p> <ul style="list-style-type: none"> <li>• Personal/Professional references</li> <li>• Personal interview</li> <li>• Written application</li> </ul> <p>Criminal background checks, if required by Agency Policy, must be conducted prior to employment and thereafter for all staff and/or volunteers per Agency policy.</p>	<ul style="list-style-type: none"> <li>• Review of Agency's Policies and Procedures Manual indicates compliance</li> <li>• Review of personnel and/or volunteer files indicates compliance</li> </ul>
1.2	<p><u>Initial Training: Staff/Volunteers</u>            Initial training includes eight (8) hours HIV/AIDS basics, safety issues (fire &amp; emergency preparedness, hazard communication, infection control, universal precautions), confidentiality issues, role of staff/volunteers, agency-specific information (e.g. Drug Free Workplace policy). Initial training must be completed within 60 days of hire.</p>	<ul style="list-style-type: none"> <li>• Documentation of all training in personnel file.</li> <li>• Specific training requirements are specified in Agency Policy and Procedure</li> <li>• Materials for staff training and continuing education are on file</li> <li>• Staff interviews indicate compliance</li> </ul>
1.3	<p><u>Staff Performance Evaluation</u>            Agency will perform annual staff performance evaluation.</p>	<ul style="list-style-type: none"> <li>• Completed annual performance evaluation kept in employee's file</li> <li>• Signed and dated by employee and supervisor (includes electronic signature)</li> </ul>
1.4	<p><u>Cultural and HIV Mental Health Co-morbidity Competence Training/Staff and Volunteers</u>            All staff must receive four (4) hours of cultural competency training and an additional one (1) hour of HIV/Mental Health co-morbidity sensitivity training annually. All new employees must complete these within ninety (90) days of hire.</p>	<ul style="list-style-type: none"> <li>• Documentation of training is maintained by the agency in the personnel file</li> </ul>
1.5	<p><u>Staff education on eligibility determination and fee schedule</u>            Agency must provide training on agency's policies and procedures for eligibility determination and sliding fee</p>	<p>Documentation of training in employee's record</p>

## Primary Medical Care

The 2006 CARE Act defines Primary Medical Services as the “provision of professional diagnostic and therapeutic services rendered by a physician, physician’s assistant, clinical nurse specialist, nurse specialist, nurse practitioner or other health care professional who is certified in their jurisdiction to prescribe Antiretroviral (ARV) therapy in an outpatient setting..... Services include diagnostic testing, early intervention and risk assessment, preventive care and screening, practitioner examination, medical history tasking, diagnosis and treatment of common physical and mental conditions, prescribing and managing medication therapy, education and counseling on health issues, well-baby care, continuing care and management of chronic conditions and referral to and provisions of specialty care”.

The RW Part A primary care visit consist of a client examination by a qualified Medical Doctor, Nurse Practitioner, Clinical Nurse Specialist and/or Physician Assistant and includes all ancillary services such as eligibility screening, patient medication/treatment education, adherence education, counseling and support; medication access/linkage; and as clinically indicated, OB/GYN specialty procedures, nutritional counseling, routine laboratory and radiology. All primary care services must be provided in accordance with the current U.S. Department of Health and Human Services guidelines

1.0	<b>Medical Care for persons with HIV disease should reflect competence and experience in both primary care and therapeutics known to be effective in the treatment of HIV infection and is consistent with the most current published U.S. Public Health Service treatment guidelines</b>	
1.1	<u>Minimum Qualifications</u> Medical care for HIV infected persons shall be provided by MD, NP, CNS or PA licensed in the State of Texas and has at least two years paid experience in HIV/AIDS care including fellowship.	<ul style="list-style-type: none"> <li>• Credentials on file</li> </ul>
1.2	<u>Licensing, Knowledge, Skills and Experience</u> <ul style="list-style-type: none"> <li>• All staff maintain current organizational licensure (and/or applicable certification) and professional licensure</li> <li>• The agency must keep professional licensure of all staff providing clinical services including physicians, nurses, social workers, etc.</li> <li>• Supervising/attending physicians of the practice show continuous professional development through the following HRSA recommendations for HIV-qualified physicians (<a href="http://www.hivma.org">www.hivma.org</a>):</li> <li>• Clinical management of at least 25 HIV-infected patients within the last year</li> <li>• Maintain a minimum of 15 hours of HIV-specific CME</li> </ul>	<ul style="list-style-type: none"> <li>• Documentation in personnel record</li> </ul>



# Organization of the PMs

## All Performance Measures (PMs) are service-specific

- Each PM is a system-wide measure that helps evaluate the impact of HIV services on the health status of the people living with HIV/AIDS in the Houston area.
- PMs are based on current U.S. Department of Health and Human Services (HHS) Guidelines for HIV/AIDS health care and community input.
- In general, PMs assess the percentage of consumers who, following receipt of a specific service:
  1. Entered into and/or were retained in HIV medical care
  2. Experienced improvement in HIV health indicators like CD4 counts and viral load suppression
  3. Received recommended medical, oral, and optical screening, care, and follow-up
  4. Were screened for and received mental health or substance abuse services if needed
  5. Obtained housing if homeless or unstably housed
  6. Secured 3<sup>rd</sup> party health care coverage (insurance) if uninsured, and/or
  7. Completed SSI disability, insurance, public benefits and income-related cases resulting in access to or continued access to benefits (legal services only)

Ryan White Part A  
HIV Performance Measures  
FY 2014 Report

**Primary Medical Care**  
All Providers

For FY 2014 (3/1/2014 to 2/28/2015), 7,024 clients utilized Part A primary medical care.

Primary Care	FY 2013	FY 2014	Change
100% of Ryan White Part A program-funded outpatient/ambulatory care organizations in the system/network will have a waiting time of 15 or fewer business days for a Ryan White Part A program-eligible patient to receive an appointment to enroll in outpatient/ambulatory medical care	Data is not available at this time		
90% of clients with HIV infection will have two or more medical visits, at least 90 days apart, in an HIV care setting in the measurement year	4,200 (78.9%)	4,106 (74.9%)	-4.0%
Percentage of clients with a diagnosis of HIV who did not have a medical visit in the last six months of the measurement year	1,313 (24.7%)	1,566 (28.6%)	3.9%
Percentage of clients with a diagnosis of HIV who had at least one medical visit in each six-month period of the 24-month measurement period with a minimum of 60 days between medical visits	2,379 (27.0%)		

CD-4 Count and Viral Suppression	FY 2013	FY 2014	Change
75% of clients for whom there is lab data in the CPCDMS will show improved or maintained CD-4 counts over time	5,100 (91.9%)	5,321 (92.2%)	0.3%
Percentage of clients who have a CD-4 < 200 within the first 90 days of initial enrollment in primary medical care	294 (23.1%)	272 (20.0%)	-3.1%
Percentage of clients for whom there is lab data in the CPCDMS who are virally suppressed (< 200)	3,846 (75.5%)	4,058 (79.8%)	4.3%
Percentage of clients aged six months and older with a diagnosis of HIV/AIDS, with at least two CD-4 cell counts or percentages performed during the measurement year at least three months apart	3,996 (75.1%)	4,104 (74.9%)	0.2%
Percentage of clients with a diagnosis of HIV/AIDS with a viral load test performed at least every six months during the measurement year	2,586 (56.7%)	2,639 (58.4%)	1.7%



# Take-Home Messages

- Standards of Care set the minimum acceptable levels of *quality* of HIV care, treatment, and support services provided to PLWHA by Ryan White funded providers
- Performance Measures provide a way to evaluate the system-wide impact of HIV services on the health status of the people living with HIV/AIDS in the Houston area.
- SOC and PMs do *not* evaluate a specific individual provider or agency, nor do they determine which provider/agency receives Ryan White funds
- Consumers have an important role in the SOC/PM process. They review the standards and make recommendation for improvements, and they serve as a voice of the consumer in defining quality of HIV care.



# Why does any of this matter in the real world?

## *Example: Linkage to Care*

### Standard of Care:

*What is the general Standard of Care for linking clients into care?*

**General Standard 4.11 (Accessibility – Linkage Into Core Services):** Agency staff will provide out-of-care clients with individualized information and referral to connect them into ambulatory outpatient medical care and other core medical services.

*How will the Administrative Agent know this Standard has been met?*

- Documentation of client referral is present in client record
- Review of agency's policies & procedures' manual indicates compliance



# Why does any of this matter in the real world?

*Example: Linkage to Care*

Performance Measure:

*How will the Administrative Agent measure whether efforts to link clients into care have been effective?*

## **Non-Medical Case Management / Service Linkage**

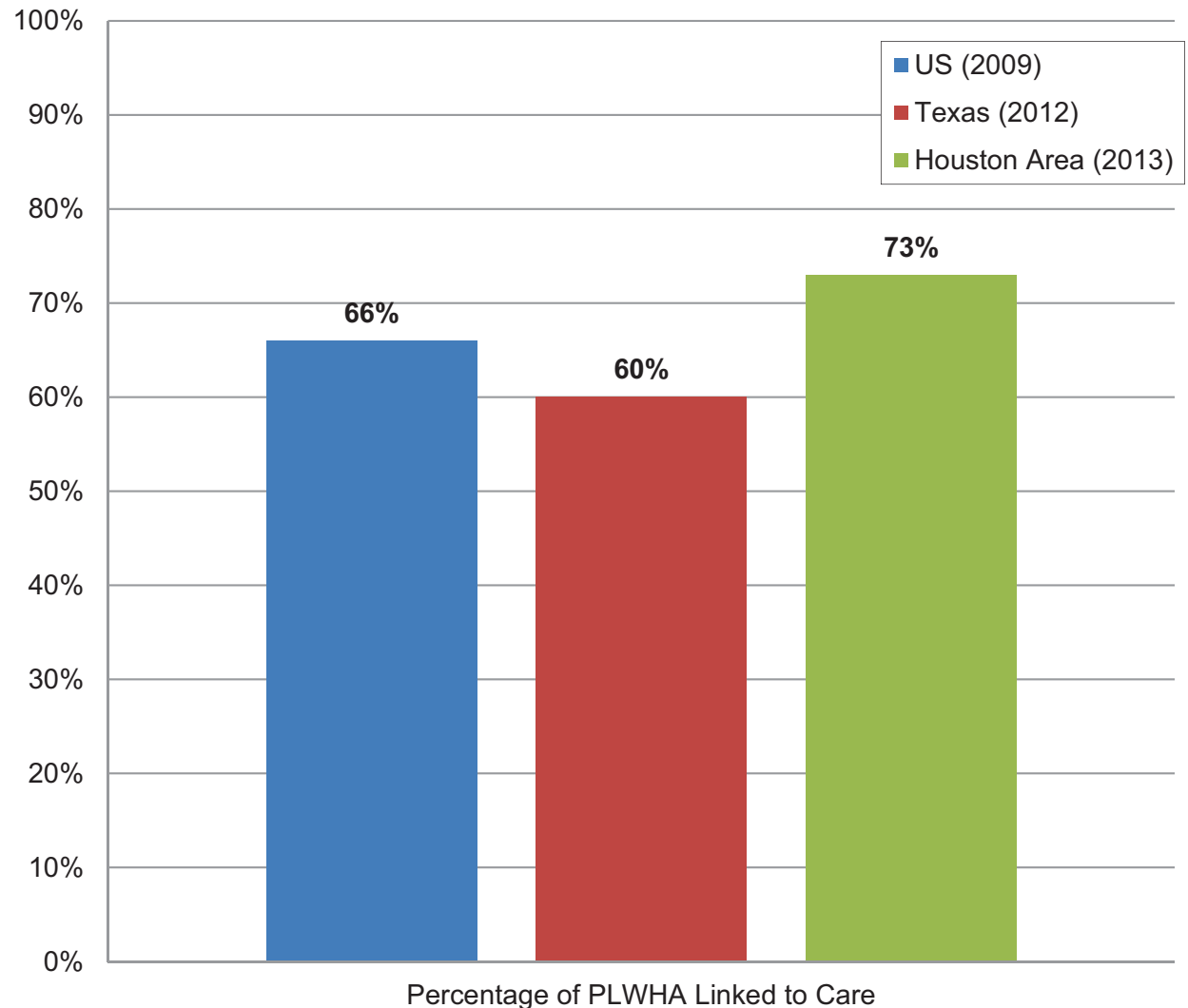
### **All Providers:**

1. A minimum of 70% of clients will utilize Part A/B/C/D primary care two or more times at least three months apart after accessing non-medical case management (service linkage)
2. Measure the number of days between first ever service linkage visit and first ever primary medical care visit
3. Assess the percentage of newly-enrolled clients who had a medical visit in each of the four-month periods of the year



# Why does any of this matter in the real world?

*Establishing SOCs and monitoring PMs help ensure that people living with HIV/AIDS in the Houston Area can expect and receive high quality life-sustaining HIV care and treatment services.*





# SOC/PM Exercise

## Practice with Standards of Care

1. If you wanted to know how quality is defined for all services provided through Ryan White, which type of Standard of Care would you review:
  - a. General Standards
  - b. Service Specific Standards

**Go to the General Standard called 4.0 Accessibility.**

2. What is the minimum definition of quality for “Cultural Competence?”
3. How does someone know if this minimum standard is met by the agency/provider--what documents are looked at?

**Go to the Service Specific Standards for Non-Medical Case Management Services (Service Linkage Worker).**

4. How long does a Service Linkage Worker have to transfer a Not-in-Care and Newly Diagnosed Client into HIV primary care?
  - a. 90 days
  - b. 120 days
  - c. Unlimited



# SOC/PM Exercise

## Practice with Performance Measures

1. True/False. There are no general Performance Measures. Performance Measures are specific to each service funded through Ryan White.

**Go to the Performance Measures for Medical Nutritional Supplements.**

2. Ideally, what percentage of clients should have improved or maintained CD-4 counts over time after receiving Medical Nutrition Supplements?
  - a. 75%
  - b. 80%
  - c. 85%
  - d. 90%

**Go to the Performance Measures for Primary Medical Care.**

3. Name 3 Clinical Chart Review Measures.



# Ending the HIV Epidemic/Integrated HIV Prevention and Care Planning Body

## Summary Reports from Committees and Workgroups

July 2024

For more information about the groups listed below, please contact Diane Beck, RWOS by telephone at 832 927-7926 or by email at: [Diane.Beck@harriscountytexas.gov](mailto:Diane.Beck@harriscountytexas.gov). All Committees & Workgroups meet virtually only, unless otherwise noted, and can be accessed by Zoom at: <https://us02web.zoom.us/j/8899837982> Meeting ID: 889 983 7982

**Due to a number of unusual weather events, most committee & workgroup meetings were cancelled in July**

### **Aging and HIV Workgroup, Diane Beck, RWOS**

The July meeting was cancelled, but important updates include the following from Ryan White Grant Administration: the Ryan White Part A–funded Aging and HIV Project began in July 2024 through the local AIDS Education and Training Center (AETC) provider, Baylor College of Medicine. The project provides technical assistance and training to providers to address the health care and psychosocial needs of people aging with HIV. Specifically, the Ryan White Planning Council has created five case manager positions. Those hired will be trained by AETC to be geriatric HIV case managers. These case managers will encourage physicians to collect baseline data on older adults living with HIV, with the intent of using the data to develop appropriate services. Ryan White Part A is already prepared to underwrite the cost of the tests through the primary care funded service category. At the September workgroup meeting, members will watch a panel discussion from On Aging 2024, entitled “[The Duality of Aging with HIV: Understanding the Structural and Policy Barriers for Older People Living with HIV \(PLWH\)](#),” moderated by Carmen Villar, vice president of public affairs at Gilead Sciences. Also, featuring Bamby Salcedo, CEO of TransLatin@ Coalition; Jeff Berry, executive director, The Reunion Project; and Malcolm Reid, director of policy, THRIVE SS. **Next meeting: Noon, Wednesday, September 18, 2024**

### **Consumer and Community Engagement Workgroup, Cydney Clay, Houston Health Department**

This committee merged with the Ryan White Affected Community Committee. Members are calling local colleges and universities and gathering information for an inventory of HIV prevention and care services provided on campus. **Next meeting: in-person or virtual, 11 a.m., Monday, September 23, 2024**

**Education and Awareness Committee.** See Treat, Education, and Awareness Committee.

### **Housing Workgroup, Tori Williams, RWOS and Amber David, Houston Health Department**

The July meeting of the committee was cancelled. **The date of the September meeting is to be announced.**

### **Needing In-Person Engagement Workgroup, Tori Williams, RWOS**

The July meeting of the committee was cancelled. In the meantime, **Tori, Marlene and Jason are working on securing funding** for the video HIV training project for staff who work with individuals who are unhoused and/or impacted by mental health, substance use disorder or interpersonal violence. **The date of the September meeting is to be announced.**

**Professional Health Care Engagement Workgroup, Tori Williams, RWOS, and Richon Ohafia, Ryan White Grant Administration.** The July meeting of the committee was cancelled. In the meantime, **Tori, Marlene and Jason are working on securing funding** for the video HIV training project for staff who work with individuals who are unhoused and/or impacted by mental health, substance use disorder or interpersonal violence. **The date of the September meeting is to be announced.**

### **Prevention and Policy Committee, Eliot Davis, Houston Health Department**

The committee’s July meeting was cancelled. **The date of the September meeting is to be announced.**

**INTEGRATED PLANNING BODY**  
**Summary Reports of Committees and Workgroups for July 2024—Continued**

**Quality of Life and Social Determinants Committee, Tori Williams, RWOS and Jovaun Hicks, Houston Health Department.** The Co-Chairs of the Committee met with staff on July 19th and determined that the next Quality of Life and Social Determinants Committee meeting should be dedicated to reviewing the five Quality of Life Goals from the National HIV/AIDS Strategy, which are also in the Houston Joint Plan. Before setting a date for the Committee to meet, Steven is going to work with the Houston Medical Monitoring Project to get the data that they have already collected that relates to the goals. In the meantime, the workgroups under the committee have been meeting and working on their goals and activities. **Next meeting: To be announced**

**Racial and Social Justice Workgroup, Richon Ohafia, Ryan White Grant Administration**  
The July meeting was cancelled. **Next Meeting: 6 p.m., Tuesday, September 17, 2024**

**Research, Data, and Implementation Committee and Monitoring, Quality Assurance, and Evaluation Committee, Tori Williams, RWOS, and Aryana Butler, Houston Health Department.** Members of the committee were encouraged to spend July and August meeting with their assigned EHE/Integrated Plan committee or workgroup so that they could begin to develop evaluation strategies. **Next Meeting: 2 p.m., Thursday, September 12, 2024**

**Respond Committee, Cydney Clay, Houston Health Department**  
The committee's July meeting was cancelled. **Next meeting: 1:00 p.m., Tuesday, September 17, 2024**

**Status-Neutral Systems and Diagnose Committee, Chelsea Frand, Houston Health Department**  
This committee's July meeting was cancelled. **Next meeting: To be announced.**

**Treat, Education, and Awareness Committee, Tori Williams, RWOS**  
The committee is a merger of the Treat Committee and the Education and Awareness Committee. Members will dedicate between July and December 2024 to participate in meeting the goals and activities of its four related workgroups 2024. **Next meeting: January 2025**

**Youth and College Engagement Workgroup, Rod Avila, RWOS, and Sha'Terra Johnson, The Resource Group** Members of the Ryan White Planning Council are meeting with Allies in Hope clients 18 to 24 years old. The RWPC provides speakers on health-related issues and meals for the participants. **Tori, Marlene and Jason are working on securing funds to underwrite the cost of meals for the expanded program.** Once this happens, the program will be expanded to provide monthly speakers for young clients of three organizations: Allies in Hope, Tony's Place, and the Montrose Center. In the meantime, clients of the three organizations are electing representatives to serve on a Youth Steering Committee that will select monthly topics, speakers, and dinner menus; name the program; and govern other activities. On a different note, D. Perez provided the workgroup members with information about *Connect to Protect*, a quarterly meeting for agency staff who work with youth. The meetings bring together various organizations to discuss such topics as research on HIV prevention for youth and ways to engage young people. One member of the workgroup asked members to be mindful of stigmatizing language used for unhoused youth (C. Brown will share a list of preferred language). K. Jones will create evaluation benchmarks. **Next meeting: 6 p.m., Tuesday, September 3, 2024**