

Houston Area HIV Services Ryan White Planning Council

Office of Support

1440 Harold St., Houston, Texas 77006

832 927-7926 telephone; <http://rwpchouston.org>

MEMORANDUM

To: Steering Committee Members:
Crystal R. Starr, Chair
Skeet Boyle, Vice Chair
Josh Mica, Secretary
Rodney Mills, Co-Chair, Affected Community Committee
Diana Morgan, Co-Chair, Affected Community Committee
Allen Murray, Co-Chair, Comprehensive HIV Planning Committee
Steven Vargas, Co-Chair, Comprehensive HIV Planning Committee
Ronnie Galley, Co-Chair, Operations Committee
Cecilia Ligons, Co-Chair, Operations Committee
Bobby Cruz, Co-Chair, Priority and Allocations Committee
Peta-gay Ledbetter, Co-Chair, Priority and Allocations Committee
Tana Pradia, Co-Chair, Quality Improvement Committee
Pete Rodriguez, Co-Chair, Quality Improvement Committee

Copy: Glenn Urbach
Mauricia Chatman
Francisco Ruiz
Tiffany Shepherd
Patrick Martin
Jason Black

Diane Beck
Mackenzie A. Hudson
EMAIL ONLY:
Ann Robison
David Williams
Sha'Terra Johnson

From: Tori Williams

Date: Thursday, October 26, 2023

Re: Meeting Announcement

We look forward to seeing you for the following meeting:

Ryan White Steering Committee Meeting

12 noon, Thursday, November 2, 2023

Join the Zoom meeting by clicking on:

<https://us02web.zoom.us/j/85782189192?pwd=YmtrcktWcHY5SIV2RE50ZzYraEERQT09>

Meeting ID: 857 8218 9192 Passcode: 885832

Or, use your phone to dial in by calling 346 248-7799

In-Person: Please join us at Bering Church, 1440 Harold St., Houston, Texas 77006

Please park and enter from behind the building on Hawthorne Street.

Please contact Rod to RSVP, even if you cannot attend, and let her know if you prefer to participate virtually or in person. Rod can be reached by telephone at: 832 927-7926 or by email at: Rodriga.Avila@harriscountytexas.gov. Thank you!

HOUSTON AREA HIV SERVICES RYAN WHITE PLANNING COUNCIL



STEERING COMMITTEE

AGENDA

12 noon, Thursday, November 2, 2023

Join Zoom Meeting by clicking onto:

<https://us02web.zoom.us/j/85782189192?pwd=YmtrcktWcHY5SIV2RE50ZzYraEErQT09>

Meeting ID: 857 8218 9192

Passcode: 885832

Or, dial in by calling 346 248-7799

In-Person: Please join us at Bering Church, 1440 Harold St., Houston, Texas 77006

Park and enter from behind the building on Hawthorne Street.

- I. Call to Order Crystal R. Starr, Chair
RW Planning Council
 - A. Welcoming Remarks
 - B. Moment of Reflection
 - C. Select the Committee Co-Chair who will be voting today
 - D. Adoption of the Agenda
 - E. Adoption of the Minutes

- II. Public Comment and Announcements
(NOTE: If you wish to speak during the Public Comment portion of the meeting, please sign up on the clipboard at the front of the room. No one is required to give his or her name or HIV status. All meetings are audio taped by the Office of Support for use in creating the meeting minutes. The audiotape and the minutes are public record. If you state your name or HIV status it will be on public record. If you would like your health status known, but do not wish to state your name, you can simply say: "I am a person living with HIV", before stating your opinion. If you represent an organization, please state that you are representing an agency and give the name of the organization. If you work for an organization, but are representing yourself, please state that you are attending as an individual and not as an agency representative. Individuals can also submit written comments to a member of the staff who would be happy to read the comments on behalf of the individual at this point in the meeting. All information from the public must be provided in this portion of the meeting.)

- III. Reports from Committees
 - A. Comprehensive HIV Planning Committee Allen Murray and
Steven Vargas, Co-Chairs
Item: 2023 Houston Area HIV Needs Assessment
Recommended Action: FYI: The incentives have arrived, thanks to the Resource Group, so data collection has started for the 2023 Houston Area HIV Needs Assessment.

Item: 2023 Houston HIV Epidemiologic Supplement
Recommended Action: **Motion:** Endorse the attached 2023 Epidemiologic Supplement for HIV Prevention and Care Services Planning.

Item: 2022 Integrated Planning Body
Recommended Action: FYI: Please note the attached diagram which outlines the different committees and workgroups for the 2022 Integrated Planning body. Please let Mackenzie or Tori know if you are interested in being appointed as the Co-Chair of one of the Committees or workgroups. All are eligible to be considered.

Item: 2022 Integrated Planning Community Meeting

Recommended Action: FYI: There will be a large community meeting to orient people interested in serving on the Planning body at **4 p.m. on Thursday, November 16, 2023. Location to be announced.** Please attend if possible as the meeting will be co-hosted by the Planning Council and CPG. The meeting will be in hybrid format and light refreshments will be served.

- B. Affected Community Committee Rodney Mills and
Diane Morgan, Co-Chairs
Item: FY 2024 RW Standards of Care & Performance Measures
Recommended Action: FYI: The Affected Community Committee dedicated their October Committee meeting to providing input into the FY 2024 Ryan White Standards of Care & Performance Measures. Mauricia Chatman and Francisco Ruiz presented the Part A information and Reachelian Ellison presented the Part B information.

Item: Road to Success Presentations in FY 2023

Recommended Action: FYI: The Affected Community Committee will be hosting 5 Road to Success presentations at 5 different Ryan White funded clinics before the end of FY 2023. The theme for all of the classes will be reviewing a complete menu of services available at each agency. There will be special emphasis on Emergency Financial Assistance – Pharmacy.

- C. Quality Improvement Committee Tana Pradia and
Pete Rodriguez, Co-Chairs
The Committee did not meet in October so that members could attend one of the Standards of Care/Performance Measure Workgroup meetings.

- D. Priority and Allocations Committee Peta-gay Ledbetter and
Bobby Cruz, Co-Chairs
Item: Reports from the Administrative Agent – Part A/MAI*
Recommended Action: FYI: See the attached reports from the Part A/MAI Administrative Agent:

Item: Reports from the Administrative Agent – Part B/SS**

Recommended Action: FYI: See the attached reports from the Part B/State Services Administrative Agent.

Item: FY 2023 Ryan White Part A Allocation Increases

Recommended Action: **Motion:** Approve the recommendations for increased Ryan White Part A funding outlined on the attached chart. FYI: There were no unspent MAI* funds to re-allocate.

Item: FY 2023 Unspent Ryan White Part A Funds

Recommended Action: **Motion:** In the final quarter of the FY 2023 Ryan White Part A, Part B and State Services grant years, after implementing the year end Council-approved reallocation of unspent funds and utilizing the existing 10% reallocation rule to the extent feasible, Ryan White Grant Administration (RWGA) may reallocate

any remaining unspent funds as necessary to ensure the Houston EMA has less than 5% unspent Formula funds and no unspent Supplemental funds. The Resource Group (TRG) may reallocate any remaining unspent funds as necessary to ensure no funds are returned to the Texas Department of State Health Services. RWGA and TRG must inform the Council of these shifts no later than the next scheduled Ryan White Planning Council Council Steering Committee meeting.

Item: Ryan White Part A FY 2023 Carryover Funds

Recommended Action: **Motion:** If there are FY 2023 Ryan White Part A carryover funds, it is the intent of the committee to recommend allocating the full amount to Outpatient/Ambulatory Primary Medical Care.

E. Operations Committee

Ronnie Galley and
Cecilia Ligons, Co-Chairs

Item: Payroll Debit Card Pilot Project

Recommended Action: FYI: The Council will not be using Payroll Debit Cards to distribute petty cash reimbursements due to the concern for high priced service fees.

Item: Elections for 2024 Council Officers

Recommended Action: Motion: Approve the attached slate of Candidates running for the Chair, Vice Chair or Secretary of the 2024 Planning Council. Nominations close at the end of the November Steering Committee meeting and do not open again until the day of the December election.

V. Report from the Office of Support

Tori Williams, Director

VI. Report from Ryan White Grant Administration

Glenn Urbach, Manager

VII. Report from The Resource Group

Sha'Terra Johnson,
Health Planner

IX. Announcements

X. Adjournment

* MAI = Minority AIDS Initiative Funding

** SS = State Services Funding

HOUSTON AREA HIV SERVICES RYAN WHITE PLANNING COUNCIL
 <<>>
 STEERING COMMITTEE

MINUTES

12 noon, Thursday, October 5, 2023

Meeting Location: Bering Church 1440 Harold Street; Houston, TX and Zoom teleconference

MEMBERS PRESENT	MEMBERS ABSENT	STAFF PRESENT
Crystal Starr, Chair	Allen Murray, excused	<i>Ryan White Grant Administration</i>
Skeet Boyle, Vice Chair	Diana Morgan	Glen Urbach
Josh Mica, Secretary		Jason Black
Bobby Cruz		Mauricia Chatman
Cecilia Ligons		
Peta-gay Ledbetter		<i>The Resource Group</i>
Pete Rodriguez		Sha'Terra Johnson
Rodney Mills		
Ronnie Galley		<i>Office of Support</i>
Steven Vargas		Tori Williams
Tana Pradia		Mackenzie Hudson
		Diane Beck

Call to Order: Skeet Boyle, Vice Chair, called the meeting to order at 12:08 p.m.

Boyle then called for a Moment of Reflection.

Those selected to represent their committee at today's meeting include: Mills for Affected Community, Vargas for Comprehensive HIV Planning, Galley for Operations, Ledbetter for Priority and Allocations and Pradia for Quality Improvement.

Adoption of the Agenda: *Motion #1:* *it was moved and seconded (Ligons, Vargas) to adopt the agenda. Motion carried.*

Approval of the Minutes: *Motion #2:* *it was moved and seconded (Galley, Rodriguez) to approve the September 7, 2023 minutes. Motion carried.* Abstentions: Ligons, Mills, Pradia, Vargas.

Public Comment and Announcements: None.

Reports from Committees

Comprehensive HIV Planning Committee: Steven Vargas, Co-Chair, reported on the following: 2023 Houston Area HIV Needs Assessment: As soon as The Resource Group provides the incentives, data collection for the 2023 Houston Area HIV Needs Assessment will begin. We appreciate The Resource Group providing this valuable part of the project.

Affected Community Committees: Rodney Mills, Co-Chair, reported on the following:

The Committee is going to host 5 Road 2 Success classes at 5 different Ryan White funded clinics before the end of FY 2023. The theme for all of the classes will be reviewing a complete menu of services available at each agency. There will be special emphasis on Emergency Financial Assistance – Pharmacy.

Quality Improvement Committee: Pete Rodriguez, Co-Chair, shared the following:

Reports from the Administrative Agent – Part B/ State Services:

- FY 23/24 Part B Procurement, dated 09/11/23
- FY 22/23 DSHS State Services Procurement, dated 09/06/23
- FY22/23 State Services Service Utilization, dated 09/06/23

Priority and Allocations Committee: No report.

Operations Committee: Cecilia Ligons, Co-Chair, reported on the following:

2023 Attendance for Council and Affiliate Members: The Committee reviewed 2023 attendance records for Council and Affiliate members and made contact with all members who have missed 4 or more Council or Committee meetings.

Elections for 2024 Council Officers: Please contact the Chairs of the Operations Committee, or the Director of the Office of Support, if you wish to nominate yourself or someone else, to run for Chair, Vice Chair or Secretary of the 2024 Planning Council. Nominations close at the end of the November Steering Committee meeting and do not open again until the day of the election.

Report from Office of Support: Tori Williams, Director, summarized the attached report.

Report from Ryan White Grant Administration: See the attached report.

Report from The Resource Group: Sha’Terra Johnson, Health Planner, summarized the attached report.

Announcements: Vargas sent an NMAC email newsletter to the Office of Support for distribution. Starr said to be sure to vote for Mica for the Thera Champion, voting ends today. A recent Project LEAP graduate, Kellé Martin, is now Chair of the Austin Planning Council.

Adjournment: Motion: *it was moved and seconded (Starr, Vargas) to adjourn the meeting at 12:55 p.m. Motion Carried.*

Submitted by:

Approved by:

Tori Williams, Director

Date

Committee Chair

Date

2023 Steering Committee Voting Record for Meeting Date 10/05/23

C = Chaired the meeting, ja = Just arrived, Im = Left the meeting

Aff-Affected Community Committee, Comp-Comprehensive HIV Planning Committee, Op-Operations Committee,
PA-Priority and Allocations Committee, QI-Quality Improvement Committee

MEMBERS	Motion #1 Agenda Carried				Motion #2 Minutes Carried			
	Absent	Yes	No	Abstain	Absent	Yes	No	Abstain
Crystal Starr, Chair		X				X		
Skeet Boyle, Vice Chair				C				C
Josh Mica, Secretary		X				X		
Rodney Mills, Aff		X						X
Steven Vargas, Comp		X						X
Ronnie Galley, Op		X				X		
Peta-gay Ledbetter, PA		X				X		
Tana Pradia, QI		X						X
<i>Non-voting members at the meeting:</i>								
Bobby Cruz, PA								
Cecilia Ligons, Op								
Pete Rodriguez, QI								
<i>Absent members:</i>								
Diana Morgan, Aff								
Allen Murray, Comp								

**Comprehensive HIV
Planning Committee
Report**



HIV in the Houston Area

2023 Epidemiologic Supplement for HIV Prevention and Care Services
Planning

CONTENTS

Notes..... 2

Executive Summary..... 3

Comparison of HIV Rates in Houston, Texas, and the U.S., 2020..... 4

Houston/Harris County..... 5

 New HIV Diagnoses, 2020..... 5

 People Living with HIV Disease, 2020..... 6

Houston Eligible Metropolitan Area (EMA) 7

 New HIV Diagnoses, 2020..... 7

 People Living with HIV Disease, 2020..... 8

 Comparison of the Houston EMA Population to the Population Living with
 HIV, 2020..... 9

 Houston HIV Care Continuum, 2020..... 11

Addendum

 Houston/Harris County New HIV Diagnoses, 2021..... 13

 Houston/Harris County People Living with HIV Disease, 2021..... 14

Produced Through a Partnership between:



**Houston Area Ryan
White Planning
Council**



**Houston Health
Department**

Disclaimer:

This document is a supplement to and should be used in conjunction with the *2019 Houston Area Integrated Epidemiologic Profile for HIV Prevention and Care Services Planning*. (December 2019). This document contains data on selected epidemiological measures of HIV disease for the jurisdictions of Houston/Harris County and the Houston Eligible Metropolitan Area (**EMA**) for the reporting period of January 1 to December 31, 2021 (unless otherwise noted). It is intended for use in HIV prevention and care services planning conducted in years 2023-24. The separation of jurisdictions in the data presentation is intended to enhance the utility of this document as a tool for planning both HIV prevention and HIV care services. Data for the third geographic service jurisdiction in the Houston Area, the Houston Health Services Delivery Area (**HSDA**), are not presented here due to the overlap of data and data sources with the EMA, which makes the data virtually identical. The 2019 Epidemiologic Profile should be referenced for a comprehensive discussion of data pertaining to the epidemiological questions outlined in joint guidance from the Centers for Disease Control and Prevention and the Health Resources and Services Administration. More recent data may have become available since the time of publication.

Funding acknowledgment:

This document is supported by CDC-RFA-PS18-1802 from the Centers for Disease Control and Prevention (**CDC**) as part of an award totaling \$8,671,634. Its contents are solely the responsibility of the authors and do not necessarily represent the official views of the CDC.

This document is also supported by the Health Resources and Services Administration (**HRSA**) of the U.S. Department of Health and Human Services (**HHS**) as part of an award totaling \$24,272,961 and was not financed with nongovernmental sources. The contents are those of the authors and do not necessarily represent the official views of, nor an endorsement, by HRSA, HHS or the U.S. Government.

Suggested citation:

2023 Epidemiologic Supplement for HIV Prevention and Care Services Planning. Reporting period: January 1 to December 31, 2020. Approved: TBD

Acknowledgments:

The development of this document was overseen by the Ryan White Planning Council and HIV Prevention Community Planning Group.

Contributors, reviewers and staff:

Houston Health Department

- Imran Shaikh, Manager – Data Services Program
- Alamou Sanoussi, Epidemiologist Supervisor – Data Services Program
- Bingjie Li, Biostatistician – Data Services Program
- Marlene McNeese, Deputy Assistant Director – HIV/STD and Viral Hepatitis Prevention
- Kirstin Short, Chief – Epidemiology
- Roger Sealy, Assistant Director

Ryan White Planning Council Office of Support

- Tori Williams, Director
- Mackenzie Hudson, Health Planner

This document was reviewed by the Overall Responsible Parties for HIV/AIDS surveillance and prevention in Houston/Harris County: **Dr. Shannon Bibbins**, Deputy Director, Houston Health Department.

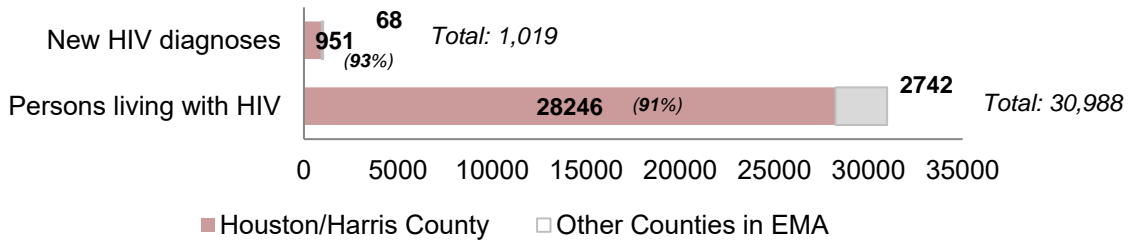
EXECUTIVE SUMMARY

Local communities use data on patterns of HIV, or HIV epidemiology, to better understand who is diagnosed and living with HIV. This helps local communities make informed decisions about HIV services, funding, and quality.

This document is a supplement to the Houston Area’s current epidemiological profile of HIV (published in December 2019) and provides updated data on core HIV indicators used in local planning, including new HIV diagnoses and cumulative people living with HIV (HIV prevalence), for the two local jurisdictions of Houston/Harris County and the Houston Eligible Metropolitan Area (**EMA**), a six-county area that includes Houston/Harris County.¹ Data for the year 2020 should be interpreted with caution due to the impact of the COVID-19 pandemic on access to HIV testing, care-related services, and surveillance activities in state/local jurisdictions. A summary of key data is below:

- At the end of calendar year 2020, there were 30,988 diagnosed people living with HIV (**PLWH**) in the Houston EMA, a 2.6% increase from 2019 (2019 total = 30,198). In 2020, 91% of PLWH resided in Houston/Harris County.
- Also, in 2020, 1,019 new diagnoses of HIV were reported in the Houston EMA, a 22% decrease from 2019 (2019 total = 1,313). At the time of diagnosis, 93% resided in Houston/Harris County.

Number of New HIV Diagnoses and People Living with HIV in the Houston EMA, by County, 2020



Sources: Texas eHARS, as of 12/31/2022
 Definitions: New HIV diagnoses = People diagnosed with HIV between 1/1/2020 and 12/31/2020, with residence at diagnosis in Houston EMA. People living with HIV = People living with HIV at the end of calendar year 2020.

- In both Houston/Harris County and the Houston EMA, the rates of new HIV diagnoses and prevalence continue to exceed rates both for Texas and the U.S. The rate of new HIV diagnoses in Houston/Harris County is more than twice the rate for the U.S.
- Compared to the general population in the Houston EMA, PLWH are disproportionately male, Black/African Americans, and ages 45 to 54. There is a larger proportion of people ages 25 to 34 among new HIV diagnoses.
- Among 30,988 HIV-diagnosed individuals in the Houston EMA in 2020, 73% had receipt of care (at least one CD4/VL test in year); 56% were retained in HIV care (at least two CD4/VL tests in year, at least three months apart); and 60% maintained or reached viral load suppression (≤ 200 copies/mL).

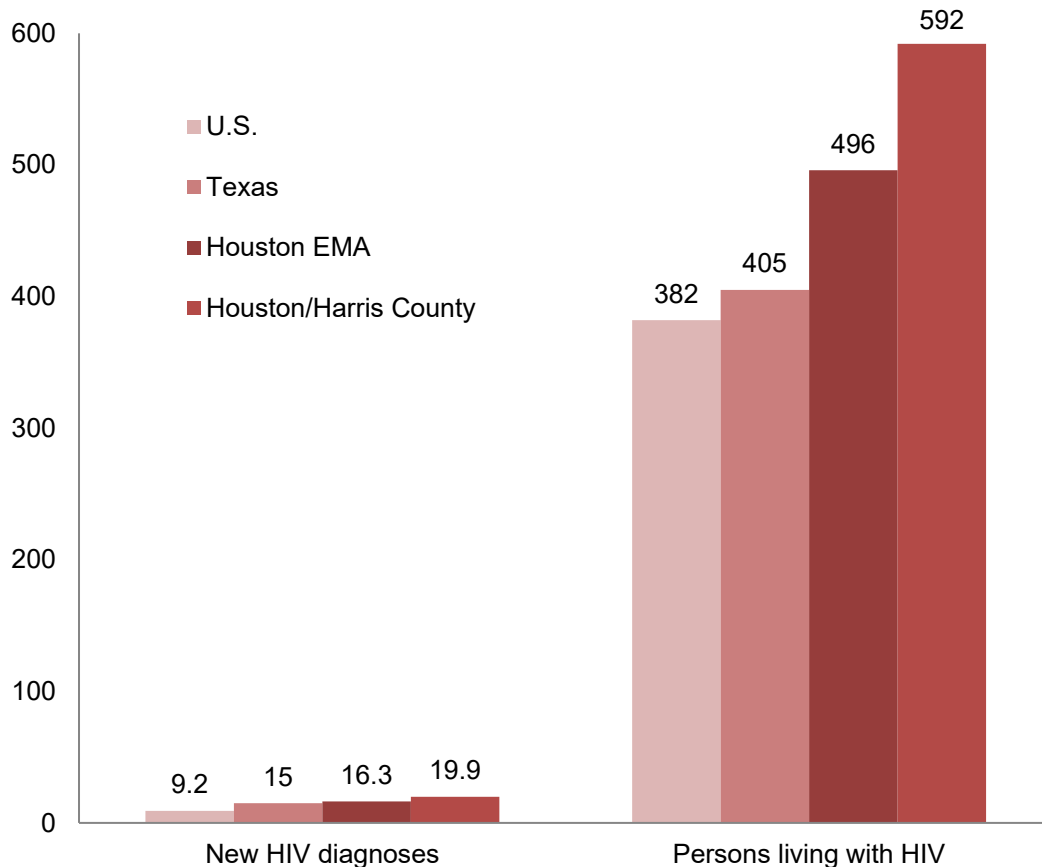
¹Pages marked “EMA” in the top left corner use 2020 Houston EMA HIV prevalence data, and pages marked “H/HC” in the top left corner use 2020 Houston/Harris County HIV prevalence data, unless otherwise noted.

COMPARISON OF HIV RATES IN HOUSTON, TEXAS, AND THE U.S.

A comparison of core HIV epidemiological indicators between the two Houston area jurisdictions (Houston/Harris County and the Houston EMA), the State of Texas, and the U.S. provides context for the local HIV burden data described in this document.

Overall, both Houston/Harris County and the Houston EMA have higher rates of new HIV diagnoses and HIV prevalence (or PLWH per 100,000 population) than both Texas and the U.S. This indicates that the HIV burden in the Houston area is greater than the state and the nation, even when adjusted for population size. In 2020, the Houston EMA had the highest new HIV diagnoses of any EMA/Transitional Grant Areas in Texas, according to epidemiological data provided by the Texas Department of State Health Services (**TDSHS**).

Rate of New HIV Diagnoses and of People Living with HIV for the U.S., Texas, and Houston Area Jurisdictions



*Rate is per 100,000 population in the respective jurisdiction.

Sources:

U.S.: U.S.: Centers for Disease Control and Prevention. *Diagnoses of HIV Infection in the United States and Dependent Areas, 2020*. HIV Surveillance Report, 2020 (Preliminary); vol. 33. Published August 2022.

AIDSVu: Rates of Persons Living with HIV, 2020

Houston EMA: Texas eHARS. All data, 2020;

Houston/Harris County: Houston/Harris County eHARS. Diagnoses, 2020; Prevalence, 2020.

NEW HIV DIAGNOSES IN HOUSTON/HARRIS COUNTY (H/HC)

In 2020, 951 new diagnoses of HIV disease (including stage 3 HIV/formerly AIDS) were reported in Houston/Harris County, a 23% decrease from 2019 (2019 total = 1,233). Data for the year 2020 should be interpreted with caution due to the impact of the COVID-19 pandemic on access to HIV testing, care-related services, and surveillance activities in state/local jurisdictions. The rate of new HIV and stage 3 HIV diagnoses in Houston/Harris County decreased from 25.9 to 19.9, while the rate of stage 3 HIV was approximately 5 new diagnoses for every 100,000 residents. When compared to 2019, decreases in new HIV rates occurred among all groups.

Proportionally, Black/African Americans made up the majority of new HIV diagnoses in 2020 at 47%, followed by Hispanic/Latinx at 38%. Male-to-male sexual contact or MSM accounted for the most transmission risk at 74%, followed by Sex with male/Sex with female (formerly heterosexual) at 19%.

New Diagnoses of HIV and Stage 3 HIV in Houston/Harris County by Sex assigned at Birth, Race/Ethnicity, Age, and Transmission Risk, 2020 ^a						
	New HIV ^b			New stage 3 HIV		
	Cases	%	Rate ^c	Cases	%	Rate ^c
Total	951	100.0	19.93	229	100.0	4.80
Sex assigned at Birth						
Male	799	84.02	34.10	187	81.66	7.98
Female	152	15.98	6.39	42	18.34	1.77
Race/Ethnicity						
White	107	11.25	8.15	21	9.17	1.60
Black/African American	445	46.79	49.00	95	41.48	10.46
Hispanic/Latinx	365	38.38	17.83	102	44.54	4.98
Other/Multiracial	34	3.58	6.76	11	4.80	2.19
Age at Diagnosis						
0 - 24 ^d	245	25.76	14.41	36	15.72	2.12
25 - 34	358	37.64	47.14	71	31.00	9.35
35 - 44	165	17.35	24.47	48	20.96	7.12
45 - 54	99	10.41	16.88	38	16.59	6.48
55 - 64	69	7.26	13.65	29	12.66	5.74
65+	15	1.58	3.03	7	3.06	1.42
Transmission Risk^e						
Male-to-male sexual contact (MSM)	707	74.34	*	151.7	66.24	*
Person who injects drugs (PWID)	42.4	4.46	*	14.5	6.33	*
MSM/PWID	20.6	2.17	*	5.5	2.40	*
Sex with male/Sex with female	176	18.51	*	56.3	24.59	*
Perinatal transmission	**	**	*	**	**	*

^aSource: Texas eHARS, analyzed by the Houston Health Department

^bHIV = People diagnosed with HIV, regardless of stage 3 HIV status, with residence at diagnosis in Houston/Harris County

^cRate per 100,000 population. Source: American Community Survey, 2020 5- year Estimates (for Harris County)

^dAge group 0-12 years was combined with 13-24 years because 0-12 years category had less than 5 cases and could not be reported.

^ePeople with no risk reported were recategorized into standard categories using the multiple imputation program of the Centers for Disease Control and Prevention (CDC).

**Cases less than 5 are suppressed.

*Population data are not available for risk groups; therefore, it is not possible to calculate rate by risk.

PEOPLE LIVING WITH HIV IN HOUSTON/HARRIS COUNTY (H/HC)

Data on the total number of people living with HIV (PLWH) in Houston/Harris County are available as of the end of calendar year 2020. At that time, there were 28,246 PLWH (regardless of progression) in Houston/Harris County. This is a prevalence rate of 592 PLWH for every 100,000 people in the jurisdiction.

Of those living with HIV in Houston/Harris County, 76% are male, 48% are Black/African Americans, 76% are people ages 35 and older, and 60% report MSM as their primary transmission risk.

People Living with HIV in Houston/Harris County by Sex assigned at Birth, Race/Ethnicity, Age, and Transmission Risk, 2020^a			
	Cases ^b	%	Rate ^c
Total	28246	100.0	592.00
Sex assigned at Birth			
Male	21527	76.21	918.80
Female	6719	23.79	282.57
Race/Ethnicity			
White	4409	15.61	335.69
Black/African American	13526	47.89	1489.32
Hispanic/Latino	8844	31.31	432.07
Other/Multiracial	1467	5.19	291.77
Current Age (as of 12/31/2020)			
0 - 24	1116	3.95	65.63
25 - 34	5776	20.45	760.49
35 - 44	6608	23.39	979.83
45 - 54	6660	23.58	1135.23
55 - 64	5792	20.51	1146.00
65+	2294	8.12	464.08
Transmission Risk^d			
Male-to-male sexual contact (MSM)	16871	59.73	*
Person who injects drugs (PWID)	2184	7.73	*
MSM/PWID	1187	4.20	*
Sex with male/Sex with female	7686	27.21	*
Perinatal transmission ^e	247	0.87	*
Other adult risk	13	0.05	*

^aSource: Texas eHARS analyzed by the Houston Health Department

^bPLWH at end of 2020 = People living with HIV, regardless of stage 3 HIV status

^cRate per 100,000 population. Source: American Community Survey, 2020- 5-year Estimates (for Harris County)

^dPatients with no risk reported were recategorized into standard categories using the multiple imputation or risk program of the Centers for Disease Control and Prevention (CDC).

^ePerinatal transmission doesn't include perinatal exposure w/HIV age 13+ years.

*Population data are not available for risk groups; therefore, it is not possible to calculate rate by risk.

NEW HIV DIAGNOSES IN THE HOUSTON EMA

In 2020, 1,019 new HIV diagnoses were reported in the Houston EMA, 22% decrease from 2019. The rate of new HIV diagnoses for every 100,000 people in the Houston EMA decreased by 22% from 20.8 in 2019 to 16.3 in 2020.

Noticeable decreases in rates compared to 2019 occurred among all groups.

Black/African Americans comprised the highest proportion of new HIV diagnoses in 2020 at 47%, followed by Hispanic/Latinx at 38%. MSM accounted for the majority of transmission risk at 74%, followed by Sex with male/Sex with female at 19%.

New Diagnoses of HIV in the Houston EMA by Sex assigned at Birth, Race/Ethnicity, Age, and Transmission Risk, 2020^a			
	Cases	%	Rate^c
Total	1,019	100.0	16.32
Sex assigned at Birth			
Male	847	83.12	27.37
Female	172	16.88	5.46
Race/Ethnicity			
White	128	12.56	6.10
Black/African American	474	46.52	44.04
Hispanic/Latinx	384	37.68	15.97
Other/Multiracial	33	3.24	4.97
Age			
0 – 24 ^d	255	25.02	11.38
25 - 34	378	37.10	39.85
35 - 44	188	18.45	21.03
45 - 54	108	10.60	13.60
55 - 64	75	7.36	10.92
65+	15	1.47	2.21
Transmission Risk^b			
Male-male sexual contact (MSM)	755	74.09	*
Person who injects drugs (PWID)	47	4.61	*
MSM/PWID	17	1.67	*
Sex with male/Sex with female	198	19.43	*
Perinatal transmission	**	**	*

^a Source: Texas eHARS, new HIV diagnoses in the Houston EMA between 1/1/2020 and 12/31/2020.

^b Cases with unknown transmission risk have been redistributed based on historical patterns of risk ascertainment and reclassification

^d Age group 0-12 years was combined with 13-24 years because 0-12 years category had less than 5 cases and could not be reported.

**Data has been suppressed to meet cell size limit of 5.

*Population data are not available for risk groups; therefore, it is not possible to calculate rate by risk.

PEOPLE LIVING WITH HIV IN THE HOUSTON EMA

At the end of calendar year 2020, there were 30,988 people living with HIV in the Houston EMA, a 3% increase from 2019 (30,198 cases). The rate of HIV prevalence also increased in 2020 to 496 PLWH for every 100,000 people in the Houston EMA, up from 478 in 2019.

Noticeable increases in prevalence rates in 2020 compared to 2019 occurred among all groups, except for Other/Multiracial and people ages 45 to 54.

Black/African Americans comprised the highest proportion of PLWH in 2020 at 48%, followed by Hispanic/Latinx at 30%. MSM accounted for the majority of transmission risk at 59%, followed by Sex with male/Sex with female at 28%.

People Living with HIV in the Houston EMA by Sex assigned at Birth, Race/Ethnicity, Age, and Transmission Risk, 2020^a				
		Diagnosed PLWH		
		Cases	%	Rate^c
Total		30,988	100.0%	496.28
Sex assigned at Birth				
	Male	23,440	75.64	757.34
	Female	7,548	24.36	239.69
Race/Ethnicity				
	White	5,163	16.66	246.01
	Black/African American	14,765	47.65	1371.76
	Hispanic/Latinx	9,448	30.49	392.82
	Other/Multiracial	1,612	5.20	242.83
Age				
	0 - 24	1,198	3.87	53.46
	25 - 34	6,251	20.17	659.08
	35 - 44	7,174	23.15	802.56
	45 - 54	7,427	23.97	935.12
	55 - 64	6,409	20.68	932.75
	65+	2,529	8.16	372.32
Transmission Risk^b				
	Male-male sexual contact (MSM)	18,395	59.36	*
	Person who injects drugs (PWID)	2,411	7.78	*
	MSM/PWID	1,270	4.10	*
	Sex with male/Sex with female	8,579	27.68	*

^a Source: Texas eHARS, diagnosed PLWH in the Houston EMA between 1/1/2020 and 12/31/2020.

^b Cases with unknown transmission risk have been redistributed based on historical patterns of risk ascertainment and reclassification; information for perinatal transmission risk and other adult risk is not available.

^c Rate per 100,000 population. Source: American Community Survey, 2020 5-year estimates Houston EMA Population Denominators.

*Population data are not available for risk groups; therefore, it is not possible to calculate rate by risk.

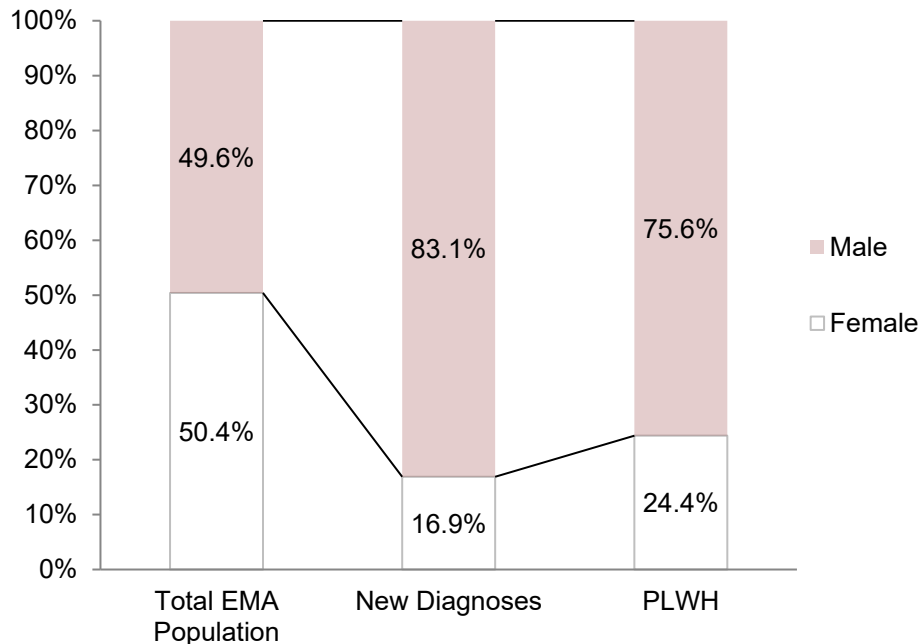
COMPARISON OF THE HOUSTON EMA POPULATION TO THE POPULATION LIVING WITH HIV

By Sex assigned at Birth: In 2020, the Houston EMA population was divided almost equally between males and females. However, more males than females were both newly diagnosed with HIV (83% vs. 17%) and living with HIV (76% vs. 24%) at the end of 2020.

By Race/Ethnicity: Black/African Americans, Hispanic/Latinx, and people of other or multiple races account for 66% of the total Houston EMA population, while these groups comprised 87% of all new HIV diagnoses in 2020 and 83% of all PLWH at the end of 2020. Black/African Americans account for 17% of the total Houston EMA population but comprised 47% of new HIV diagnoses in 2020 and close to half of all PLWH (48%) in the region at the end of 2020.

By Age: People ages 25 to 34 accounted for a much larger proportion of new HIV diagnoses (37%) than their share of the Houston EMA population (15%) in 2020. Similarly, people ages 45 to 54 accounted for a much larger proportion of those living with HIV (24%) at the end of 2020 than their share of the population (13%).

Comparison of Total Population^a in the Houston EMA to People Living with HIV^b by Sex assigned at Birth,^c 2020

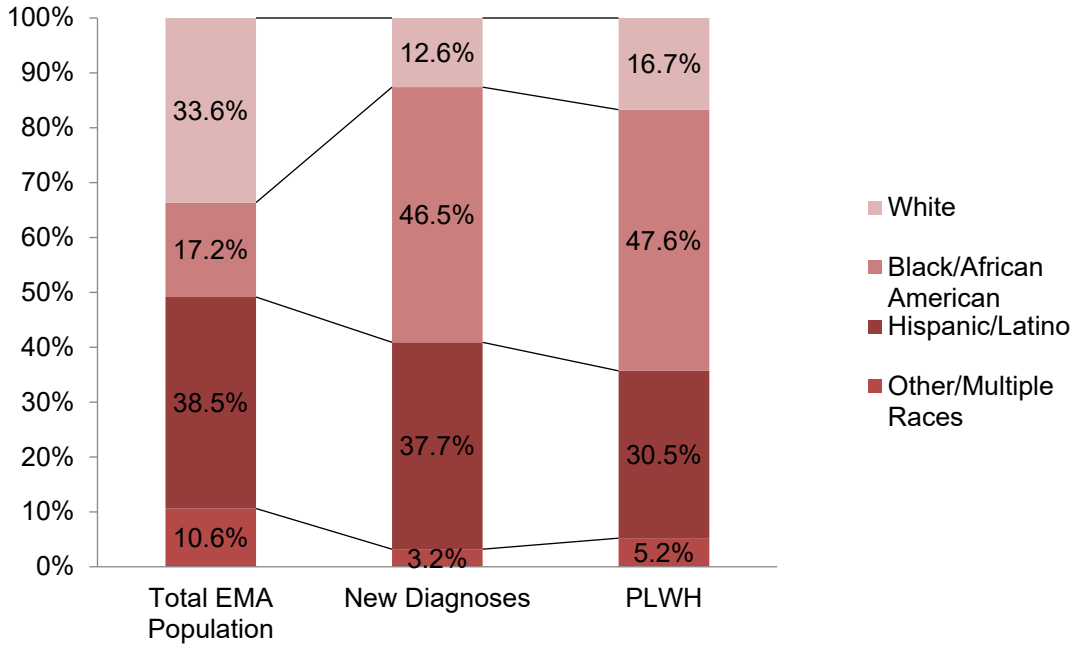


^aSource: American Community Survey, 2020 5-year estimates

^bTexas eHARS, Diagnosed PLWH in the Houston EMA as of 12/31/2020; new HIV diagnoses in the Houston EMA between 1/1/2020 and 12/31/2020.

^cTransgender people are reflected in data by sex assigned at birth due to underreporting.

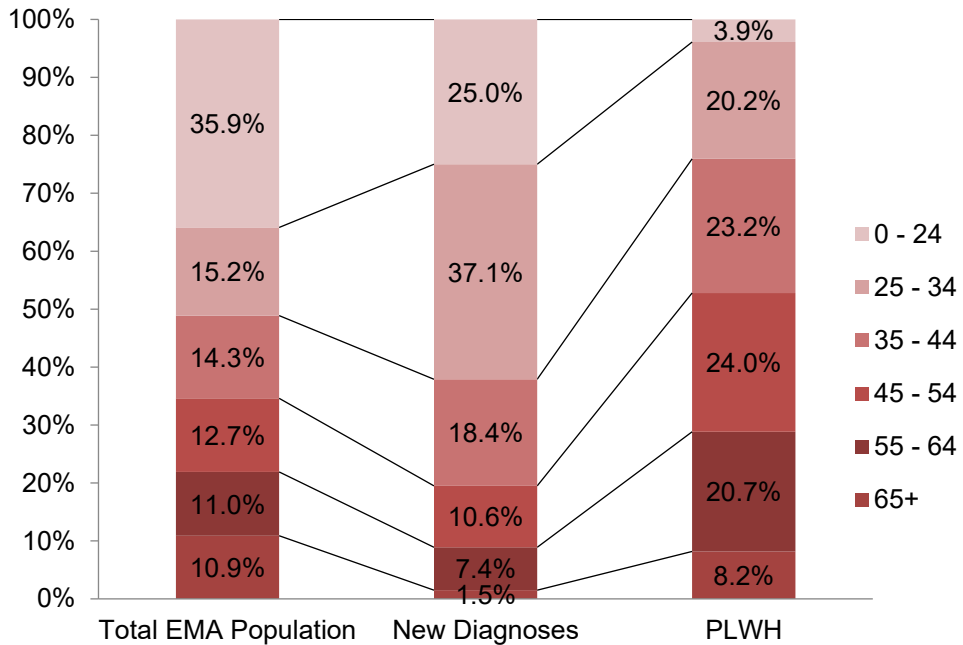
Comparison of Total Population^a in the Houston EMA to People Living with HIV^b by Race/Ethnicity, 2020



^aSource: American Community Survey, 2020 5-year estimates

^bTexas eHARS, Diagnosed PLWH in the Houston EMA as of 12/31/2020; new HIV diagnoses in the Houston EMA between 1/1/2020 and 12/31/2020.

Comparison of Total Population^a in the Houston EMA to People Living with HIV^b by Age, 2020



^aSource: American Community Survey, 2020 5-year estimates

^bTexas eHARS, Diagnosed PLWH in the Houston EMA as of 12/31/2020; new HIV diagnoses in the Houston EMA between 1/1/2020 and 12/31/2020.

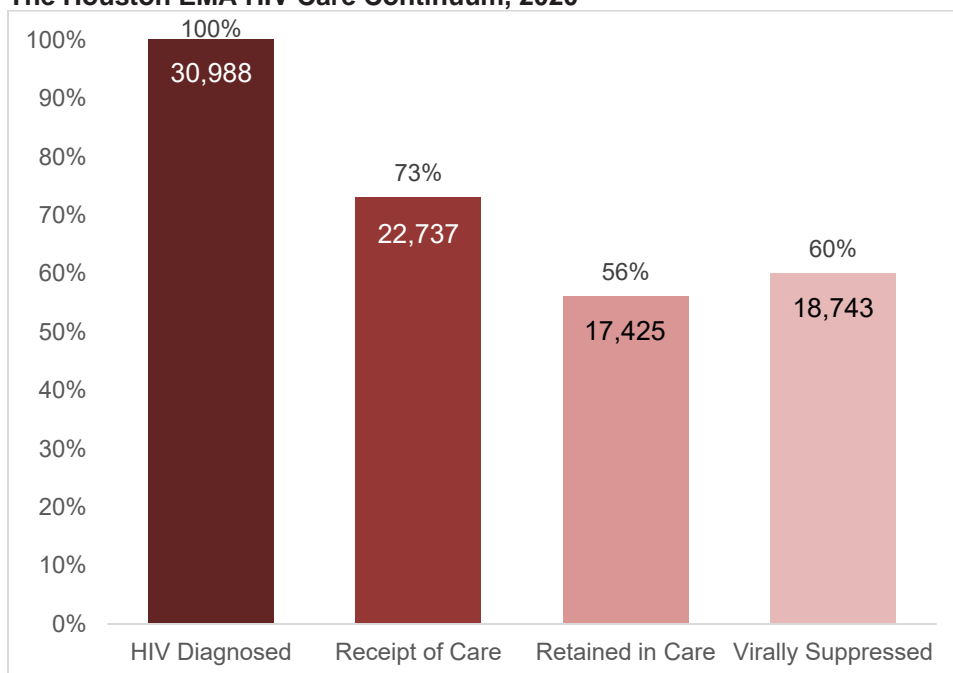
^NData suppressed as case number was fewer than 5.

THE HOUSTON EMA HIV CARE CONTINUUM

The Houston EMA HIV Care Continuum depicts the number and percentage of PLWH in Harris, Fort Bend, Waller, Montgomery, Liberty and Chambers counties at each stage of HIV care, from being diagnosed with HIV to viral suppression then linkage to care. Stakeholders use this analysis to measure the extent to which PLWH have community-wide access to care and identify potential service gaps. The methodology follows the CDC definition for a diagnosis-based HIV care continuum.

Among 30,988 HIV-diagnosed individuals in the Houston EMA in 2020, 73% had receipt of care (at least one CD4/VL test in year); 56% were retained in HIV care (at least two CD4/VL tests in year, at least three months apart); and 60% maintained or reached viral load suppression (≤ 200 copies/mL).

The Houston EMA HIV Care Continuum, 2020



Methodology of CDC diagnosis-based HIV Care Continuum:

HIV Diagnosed: No. of HIV-diagnosed people residing in the Houston EMA, 2020.

Receipt of Care: No. of HIV-diagnosed people who had a care visit as documented by a CD4 or viral load in 2020.

Retained in Care: No. of HIV-diagnosed people who had at least two care visits documented by a CD4 or viral load at least 90 days apart in 2020

Virally Suppressed: No. of HIV-diagnosed people whose last viral load test of the year was ≤ 200 copies/mL.

Source: TDSHS HIV Unmet Need Project (incl. eHARS, ELR, ARIES, ADAP, Medicaid, private payer data)

Linked to care data is not available.

ADDENDUM

To provide up-to-date findings, we include 2021 data of Houston/Harris County as an addendum to our existing report for comparison since 2021 data of EMA is not available.

NEW HIV DIAGNOSES IN HOUSTON/HARRIS COUNTY (H/HC)

In 2021, 1,182 new diagnoses of HIV disease (including stage 3 HIV/formerly AIDS) were reported in Houston/Harris County, an 24% increase from 2020 (2020 total = 951). Data for the year 2020 should be interpreted with caution due to the impact of the COVID-19 pandemic on access to HIV testing, care-related services, and surveillance activities in state/local jurisdictions. The rate of new HIV and stage 3 HIV diagnoses in Houston/Harris County increased from 19.9 to 24.9, while the rate of stage 3 HIV remained approximately 6 new diagnoses for every 100,000 residents. When compared to 2020, increases in new HIV rates occurred among all groups.

Proportionally, Black/African Americans made up the majority of new HIV diagnoses in 2021 at 46%, followed by Hispanic/Latinx at 40%. Male-to-male sexual contact or MSM accounted for the most transmission risk at 72%, followed by Sex with male/Sex with female (formerly heterosexual) at 20%.

	New HIV ^b			New stage 3 HIV		
	Cases	%	Rate ^c	Cases	%	Rate ^c
Total	1182	100.0	24.90	303	100.0	6.38
Sex assigned at Birth						
Male	961	81.30	40.64	237	78.22	10.02
Female	221	18.70	9.28	66	21.78	2.77
Race/Ethnicity						
White	117	9.90	8.77	25	8.25	1.87
Black/African American	544	46.02	61.10	127	41.91	14.26
Hispanic/Latinx	469	39.68	22.69	140	46.20	6.77
Other/Multiracial	52	4.40	11.42	11	3.63	2.42
Age at Diagnosis						
0 - 24 ^d	277	23.43	16.25	37	12.21	2.17
25 - 34	445	37.65	59.64	104	34.32	13.94
35 - 44	213	18.02	31.07	71	23.43	10.36
45 - 54	131	11.08	22.11	43	14.19	7.26
55 - 64	85	7.19	16.61	34	11.22	6.64
65+	31	2.62	6.12	14	4.62	2.77
Transmission Risk^e						
Male-to-male sexual contact (MSM)	846.8	71.64	*	198.8	65.61	*
Person who injects drugs (PWID)	67	5.67	*	21	6.93	*
MSM/PWID	30.3	2.56	*	7.1	2.34	*
Sex with male/Sex with female	236.9	20.04	*	76.1	25.12	*
Perinatal transmission	**	**	*	0	0	*

^aSource: Texas eHARS, analyzed by the Houston Health Department

^bHIV = People diagnosed with HIV, regardless of stage 3 HIV status, with residence at diagnosis in Houston/Harris County

^cRate per 100,000 population. Source: 2021 American Community Survey 5-Year Estimates and 2020 U.S. Decennial Census

^dAge group 0-12 years was combined with 13-24 years because 0-12 years category had less than 5 cases and could not be reported.

^ePeople with no risk reported were recategorized into standard categories using the multiple imputation program of the Centers for Disease Control and Prevention (CDC).

**Cases less than 5 are suppressed.

*Population data are not available for risk groups; therefore, it is not possible to calculate rate by risk.

PEOPLE LIVING WITH HIV IN HOUSTON/HARRIS COUNTY (H/HC)

Data on the total number of people living with HIV (**PLWH**) in Houston/Harris County are available as of the end of calendar year 2021. At that time, there were 29,139 PLWH (regardless of progression) in Houston/Harris County. This is a prevalence rate of 614 PLWH for every 100,000 people in the jurisdiction.

Of those living with HIV in Houston/Harris County, 76% are male, 48% are Black/African Americans, 76% are people ages 35 and older, and 61% report MSM as their primary transmission risk.

People Living with HIV in Houston/Harris County by Sex assigned at Birth, Race/Ethnicity, Age, and Transmission Risk, 2021^a			
	Cases ^b	%	Rate ^c
Total	29139	100.0	613.83
Sex assigned at Birth			
Male	22282	76.47	942.36
Female	6857	23.53	287.79
Race/Ethnicity			
White	4380	15.03	328.33
Black/African American	14012	48.09	1573.73
Hispanic/Latinx	9196	31.56	444.84
Other/Multiracial	1551	5.32	340.54
Current Age (as of 12/31/2021)			
0 - 24	1145	3.93	67.17
25 - 34	5944	20.40	796.64
35 - 44	6746	23.15	983.90
45 - 54	6680	22.92	1127.19
55 - 64	6050	20.76	1181.97
65+	2574	8.83	508.39
Transmission Risk^d			
Male-to-male sexual contact (MSM)	17654.8	60.59	*
Person who injects drugs (PWID)	2163.1	7.42	*
MSM/PWID	1192.6	4.09	*
Sex with male/Sex with female	7812.5	26.81	*
Perinatal transmission ^e	242	0.83	*
Other adult risk	13	0.04	*

^aSource: Texas eHARS analyzed by the Houston Health Department

^bPLWH at end of 2021 = People living with HIV, regardless of stage 3 HIV status

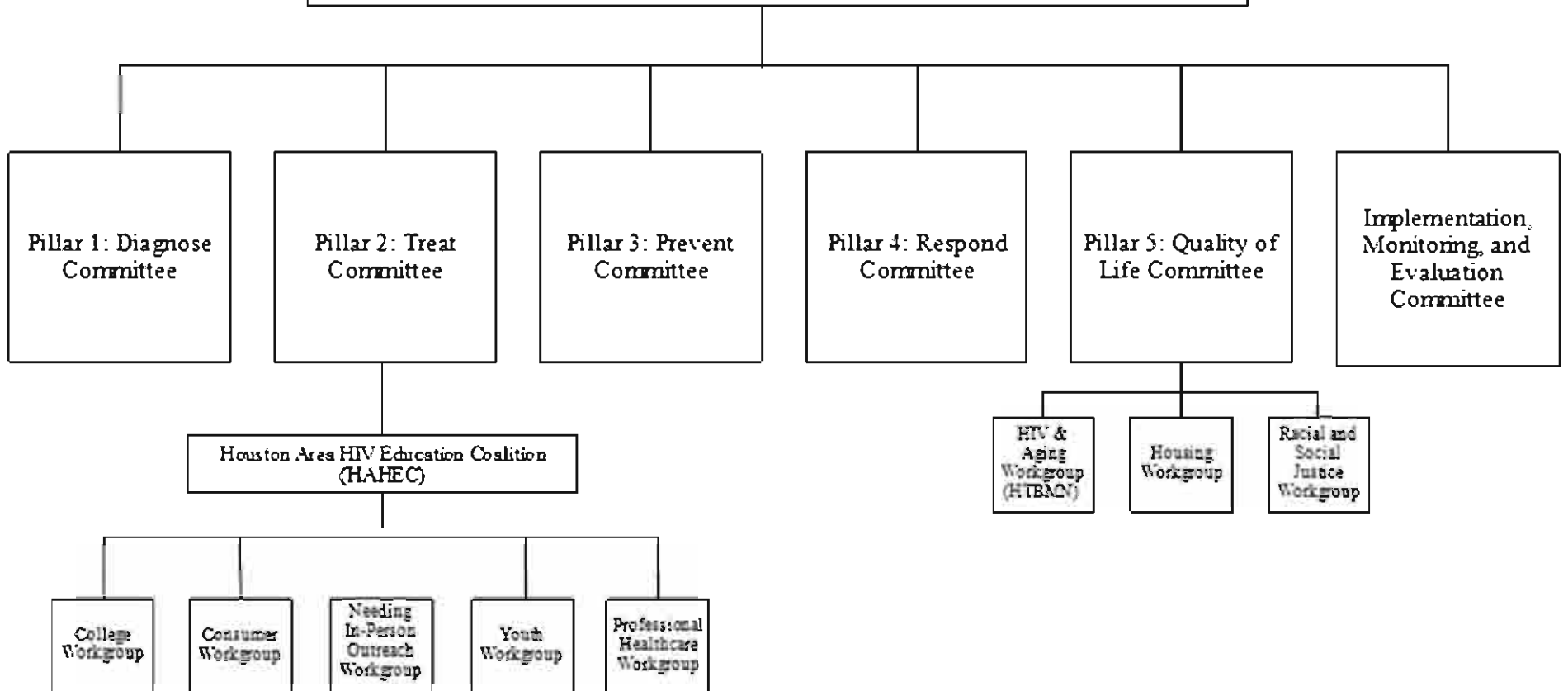
^cRate per 100,000 population. Source: 2021 American Community Survey 5-Year Estimates and 2020 U.S. Decennial Census

^dPatients with no risk reported were recategorized into standard categories using the multiple imputation or risk program of the Centers for Disease Control and Prevention (CDC).

^ePerinatal transmission doesn't include perinatal exposure w/HIV age 13+ years.

*Population data are not available for risk groups; therefore, it is not possible to calculate rate by risk.

Leadership Team



**Priority and
Allocations
Committee
Report**

Priority	Service Category	Original Allocation <i>RWPC Approved Level Funding Scenario</i>	Award Reconciliation	July Adjustments (carryover)	August 10% Rule Adjustments (f)	October Adjustments	Final Quarter Adjustments	Total Allocation	Percent of Grant Award	Amount Procured (a)	Procurement Balance	Original Date Procured	Expended YTD	Percent YTD	Percent Expected YTD
1	Outpatient/Ambulatory Primary Care	10,965,788	460,625	0	0	0	0	11,426,413	46.94%	11,426,413	0		4,171,374	37%	50%
1.a	Primary Care - Public Clinic (a)	3,927,300	182,397					4,109,697	16.88%	4,109,697	0	3/1/2023	\$1,604,066	39%	50%
1.b	Primary Care - CBO Targeted to AA (a) (e) (f)	1,064,576	49,443					1,114,019	4.58%	1,114,019	0	3/1/2023	\$603,464	54%	50%
1.c	Primary Care - CBO Targeted to Hispanic (a) (e)	910,551	42,289					952,840	3.91%	952,840	0	3/1/2023	\$648,551	68%	50%
1.d	Primary Care - CBO Targeted to White/MSM (a) (e)	1,147,924	53,314					1,201,238	4.93%	1,201,238	0	3/1/2023	\$260,634	22%	50%
1.e	Primary Care - CBO Targeted to Rural (a) (e)	1,100,000	51,088					1,151,088	4.73%	1,151,088	0	3/1/2023	\$357,810	31%	50%
1.f	Primary Care - Women at Public Clinic (a)	2,100,000	97,531					2,197,531	9.03%	2,197,531	0	3/1/2023	\$536,388	24%	50%
1.g	Primary Care - Pediatric (a.1)	15,437	-15,437					0	0.00%	0	0	3/1/2023	\$0	0%	0%
1.h	Vision	500,000	0					500,000	2.05%	500,000	0	3/1/2023	\$160,460	32%	50%
1.x	Primary Care Health Outcome Pilot	200,000	0					200,000	0.82%	200,000	0	3/1/2023	\$0	0%	50%
2	Medical Case Management	1,880,000	-97,859	0	0	0	0	1,782,141	7.32%	1,782,141	0		705,944	40%	50%
2.a	Clinical Case Management	531,025	0					531,025	2.18%	531,025	0	3/1/2023	\$286,139	54%	50%
2.b	Med CM - Public Clinic (a)	301,129	0					301,129	1.24%	301,129	0	3/1/2023	\$ 124,759	41%	50%
2.c	Med CM - Targeted to AA (a) (e)	183,663	0					183,663	0.75%	183,663	0	3/1/2023	\$84,087	46%	50%
2.d	Med CM - Targeted to H/L (a) (e)	183,665	0					183,665	0.75%	183,665	0	3/1/2023	\$26,566	14%	50%
2.e	Med CM - Targeted to W/MSM (a) (e)	66,491	0					66,491	0.27%	66,491	0	3/1/2023	\$35,030	53%	50%
2.f	Med CM - Targeted to Rural (a)	297,496	0					297,496	1.22%	297,496	0	3/1/2023	\$52,771	18%	50%
2.g	Med CM - Women at Public Clinic (a)	81,841	0					81,841	0.34%	81,841	0	3/1/2023	\$71,319	87%	50%
2.h	Med CM - Targeted to PEDI (a.1)	97,859	-97,859					0	0.00%	0	0	3/1/2023	\$0	0%	0%
2.i	Med CM - Targeted to Veterans	86,964	0					86,964	0.36%	86,964	0	3/1/2023	\$ 1,509	2%	50%
2.j	Med CM - Targeted to Youth	49,867	0					49,867	0.20%	49,867	0	3/1/2023	\$23,764	48%	50%
3	Local Pharmacy Assistance Program	2,067,104	0	0	0	0	0	2,067,104	8.49%	2,067,104	0	3/1/2023	\$824,677	40%	50%
3.a	Local Pharmacy Assistance Program-Public Clinic (a) (e)	367,104	0					367,104	1.51%	367,104	0	3/1/2023	\$96,505	26%	50%
3.b	Local Pharmacy Assistance Program-Untargeted (a) (e)	1,700,000	0					1,700,000	6.98%	1,700,000	0	3/1/2023	\$728,171	43%	50%
4	Oral Health	166,404	0	0	0	0	0	166,404	0.68%	166,404	0	3/1/2023	\$83,900	50%	50%
4.b	Oral Health - Targeted to Rural	166,404	0					166,404	0.68%	166,404	0	3/1/2023	\$83,900	50%	50%
5	Health Insurance (c)	1,383,137	223,222	0	0	0	0	1,606,359	6.60%	1,606,359	0	3/1/2023	\$803,175	50%	50%
7	Medical Nutritional Therapy (supplements)	341,395	0	0	0	0	0	341,395	1.40%	341,395	0	3/1/2023	\$167,083	49%	50%
10	Substance Abuse Services - Outpatient (c)	45,677	0	0	0	0	0	45,677	0.19%	45,677	0	3/1/2023	\$12,119	27%	50%
13	Non-Medical Case Management	1,267,002	0	0	0	0	0	1,267,002	5.20%	1,267,002	0	3/1/2023	\$679,091	54%	50%
13.a	Service Linkage targeted to Youth	110,793	0					110,793	0.46%	110,793	0	3/1/2023	\$42,113	38%	50%
13.b	Service Linkage targeted to Newly-Diagnosed/Not-in-Care	100,000	0					100,000	0.41%	100,000	0	3/1/2023	\$31,191	31%	50%
13.c	Service Linkage at Public Clinic (a)	370,000	0					370,000	1.52%	370,000	0	3/1/2023	\$194,828	53%	50%
13.d	Service Linkage embedded in CBO Pcare (a) (e)	686,209	0					686,209	2.82%	686,209	0	3/1/2023	\$410,959	60%	50%
14	Medical Transportation	424,911	0	0	0	0	0	424,911	1.75%	424,911	0		175,902	41%	50%
14.a	Medical Transportation services targeted to Urban	252,680	0					252,680	1.04%	252,680	0	3/1/2023	\$126,678	50%	50%
14.b	Medical Transportation services targeted to Rural	97,185	0					97,185	0.40%	97,185	0	3/1/2023	\$49,224	51%	50%
14.c	Transportation vouchers (bus passes & gas cards)	75,046	0					75,046	0.31%	75,046	0	3/1/2023	\$0	0%	50%
15	Emergency Financial Assistance	1,653,247	485,889	0	0	0	0	2,139,136	8.79%	2,139,136	0		1,018,729	48%	50%
15.a	EFA - Pharmacy Assistance	1,553,247	485,889					2,039,136	8.38%	2,039,136	0	3/1/2023	\$982,992	48%	50%
15.b	EFA - Other	100,000	0					100,000	0.41%	100,000	0	3/1/2023	\$35,737	36%	50%
17	Outreach	420,000	0	0	0	0	0	420,000	1.73%	420,000	0	3/1/2023	\$108,426	26%	50%
<i>FY23_RW_DIR</i>	Total Service Dollars	20,614,665	1,071,877	0	0	0	0	21,686,542	89.09%	21,686,542	0		8,750,420	40%	50%
									Unallocated	Unobligated					50%
	Part A Grant Award:	24,342,151	Carryover:	0				Total Part A: 24,342,151	0	0					
		Original Allocation	Award Reconciliation	July Adjustments (carryover)	August 10% Rule Adjustments	October Adjustments	Final Quarter Adjustments	Total Allocation	Percent	Total Expended on Services	Percent	Award Category	Award Amount	Amount Spent	Balance
	Core (must not be less than 75% of total service dollars)	16,849,505	585,988	0	0	0	0	17,435,493	80.40%	6,768,271	77.35%	Formula			0

Priority	Service Category	Original Allocation <i>RWPC Approved Level Funding Scenario</i>	Award Reconciliation	July Adjustments (carryover)	August 10% Rule Adjustments (f)	October Adjustments	Final Quarter Adjustments	Total Allocation	Percent of Grant Award	Amount Procured (a)	Procurement Balance	Original Date Procured	Expended YTD	Percent YTD	Percent Expected YTD
	Non-Core (may not exceed 25% of total service dollars)	3,765,160	485,889	0	0	0	0	4,251,049	19.60%	1,982,149	22.65%	Supplemen			0
	Total Service Dollars (does not include Admin and QM)	20,614,665	1,071,877	0	0	0	0	21,686,542		8,750,420		Carry Over	0		0
												Totals	0	0	0
	Total Admin (must be ≤ 10% of total Part A + MAI)	2,208,914	18,000	0	0	0	0	2,226,914	8.33%						
	Total QM (must be ≤ 5% of total Part A + MAI)	428,695	0	0	0	0	0	428,695	1.60%						
MAI Procurement Report															
Priority	Service Category	Original Allocation <i>RWPC Approved Level Funding Scenario</i>	Award Reconciliation	July Adjustments (carryover)	August 10% Rule Adjustments (f)	October Adjustments	Final Quarter Adjustments	Total Allocation	Percent of Grant Award	Amount Procured (a)	Procurement Balance	Date of Procurement	Expended YTD	Percent YTD	Percent Expected YTD
1	Outpatient/Ambulatory Primary Care	2,107,819	-39,764	0	0	0	0	2,068,055	86.82%	2,068,055	0		1,059,075	51%	50%
1.b (MAI)	Primary Care - CBO Targeted to African American	1,065,775	-20,106		0			1,045,669	43.90%	1,045,669	0	3/1/2023	\$566,250	54%	50%
1.c (MAI)	Primary Care - CBO Targeted to Hispanic	1,042,044	-19,658		0			1,022,386	42.92%	1,022,386	0	3/1/2023	\$492,825	48%	50%
2	Medical Case Management	320,099	-6,038	0	0	0	0	314,061	13.18%	314,061	0		\$95,738	30%	50%
2.c (MAI)	MCM - Targeted to African American	160,050	-3,019					157,031	6.59%	157,031	0	3/1/2023	\$70,410	45%	50%
2.d (MAI)	MCM - Targeted to Hispanic	160,049	-3,019					157,030	6.59%	157,030	0	3/1/2023	\$25,329	16%	50%
	Total MAI Service Funds	2,427,918	-45,802	0	0	0	0	2,382,116	100.00%	2,382,116	0		1,154,813	48%	50%
	Grant Administration	0	0	0	0	0	0	0	0.00%	0	0		0	0%	0%
	Quality Management	0	0	0	0	0	0	0	0.00%	0	0		0	0%	0%
	Total MAI Non-service Funds	0	0	0	0	0	0	0	0.00%	0	0		0	0%	0%
	Total MAI Funds	2,427,918	-45,802	0	0	0	0	2,382,116	100.00%	2,382,116	0		1,154,813	48%	50%
	MAI Grant Award	2,382,116	Carry Over:	0				Total MAI: 2,382,116							
	Combined Part A and MAI Orginial Allocation Total	25,680,192								Unallocated	Unobligated				50%
									0	0		MAI Award	2,382,116		
Footnotes:							Total Part A & MAI	26,724,267							
All	When reviewing bundled categories expenditures must be evaluated both by individual service category and by combined categories. One category may exceed 100% of available funding so long as other category offsets this overage.														
(a)	Single local service definition is multiple HRSA service categories. (1) does not include LPAP. Expenditures must be evaluated both by individual service category and by combined service categories.														
(c)	Funded under Part B and/or SS														
(e)	10% rule reallocations														

FY 2023 Ryan White Part A and MAI Service Utilization Report

Date Range 3/1/23 - 9/30/23

RW PART A SUR																			
Priority	Service Category	Goal	Unduplicated Clients Served	Male	Female	Trans gender	AA (non-Hispanic)	White (non-Hispanic)	Other (non-Hispanic)	Hispanic	0-12	13-19	20-24	25-34	35-44	45-49	50-64	65 plus	
1	Outpatient/Ambulatory Primary Care (excluding Vision)	8,643	6,781	76%	22%	2%	42%	11%	2%	44%	0%	0%	4%	28%	27%	12%	26%	3%	
1.a	Primary Care - Public Clinic (a)	2,959	2,383	73%	26%	1%	41%	9%	2%	49%	0%	0%	2%	17%	25%	15%	36%	4%	
1.b	Primary Care - CBO Targeted to AA (a)	2,417	1,801	71%	26%	4%	99%	0%	1%	0%	0%	0%	5%	37%	27%	10%	18%	2%	
1.c	Primary Care - CBO Targeted to Hispanic (a)	1,916	1,721	83%	13%	3%	0%	0%	0%	100%	0%	1%	6%	33%	29%	12%	19%	1%	
1.d	Primary Care - CBO Targeted to White and/or MSM (a)	774	528	86%	12%	1%	0%	85%	15%	0%	0%	0%	2%	27%	26%	8%	33%	4%	
1.e	Primary Care - CBO Targeted to Rural (a)	683	429	71%	29%	0%	34%	25%	1%	40%	0%	0%	4%	25%	27%	13%	28%	3%	
1.f	Primary Care - Women at Public Clinic (a)	793	627	0%	99%	1%	49%	6%	1%	44%	0%	0%	2%	12%	25%	18%	38%	6%	
1.g	Primary Care - Pediatric (a)	5	0																
1.h	Vision	2,815	1,215	74%	24%	2%	43%	13%	2%	41%	0%	0%	3%	19%	22%	12%	38%	6%	
2	Medical Case Management (f)	5,429	2,607	73%	25%	2%	0%	0%	0%	0%	0%	0%	0%	0%	0%	0%	0%	0%	
2.a	Clinical Case Management	936	474	71%	137%	2%	57%	16%	2%	26%	0%	0%	3%	22%	23%	10%	33%	8%	
2.b	Med CM - Targeted to Public Clinic (a)	569	403	93%	162%	2%	50%	12%	1%	36%	0%	0%	2%	25%	23%	12%	34%	4%	
2.c	Med CM - Targeted to AA (a)	1,625	643	72%	101%	3%	99%	0%	1%	0%	0%	0%	6%	26%	27%	10%	23%	7%	
2.d	Med CM - Targeted to H/L (a)	813	401	83%	162%	4%	0%	0%	0%	100%	0%	0%	5%	29%	27%	11%	24%	3%	
2.e	Med CM - Targeted to White and/or MSM (a)	504	215	89%	303%	1%	0%	92%	8%	0%	0%	0%	2%	21%	22%	8%	37%	10%	
2.f	Med CM - Targeted to Rural (a)	548	246	64%	265%	1%	51%	28%	3%	18%	0%	0%	3%	19%	19%	9%	41%	9%	
2.g	Med CM - Targeted to Women at Public Clinic (a)	246	186	0%	350%	0%	69%	6%	1%	24%	0%	0%	2%	24%	33%	10%	26%	5%	
2.h	Med CM - Targeted to Pedi (a)	0	0																
2.i	Med CM - Targeted to Veterans	172	31	94%	2100%	0%	74%	19%	0%	6%	0%	0%	0%	0%	0%	3%	45%	52%	
2.i	Med CM - Targeted to Youth	15	8	100%	8138%	0%	50%	25%	0%	25%	0%	13%	88%	0%	0%	0%	0%	0%	
3	Local Drug Reimbursement Program (a)	5,775	4,394	77%	20%	4%	40%	12%	2%	45%	0%	0%	4%	25%	28%	12%	28%	3%	
4	Oral Health	356	259	69%	30%	1%	38%	26%	1%	36%	0%	0%	3%	17%	25%	17%	30%	9%	
4.a	Oral Health - Untargeted (d)	NA	NA																
4.b	Oral Health - Rural Target	356	259	69%	30%	1%	38%	26%	1%	36%	0%	0%	3%	17%	25%	17%	30%	9%	
5	Mental Health Services (d)	0	NA																
6	Health Insurance	1,918	1,469	79%	19%	2%	42%	26%	3%	30%	0%	0%	2%	12%	18%	9%	41%	17%	
7	Home and Community Based Services (d)	NA	NA																
8	Substance Abuse Treatment - Outpatient	17	12	92%	8%	0%	25%	42%	8%	25%	0%	0%	0%	25%	42%	17%	17%	0%	
9	Early Medical Intervention Services (d)	NA	NA																
10	Medical Nutritional Therapy/Nutritional Supplements	546	387	76%	23%	2%	45%	17%	3%	35%	0%	0%	1%	7%	13%	9%	51%	20%	
11	Hospice Services (d)	NA	NA																
12	Outreach	1,042	500	72%	25%	3%	63%	10%	2%	25%	0%	0%	6%	31%	26%	10%	22%	4%	
13	Non-Medical Case Management	8,657	5,797																
13.a	Service Linkage Targeted to Youth	175	128	77%	23%	1%	50%	8%	2%	40%	0%	12%	88%	0%	0%	0%	0%	0%	
13.b	Service Linkage at Testing Sites	100	54	76%	24%	0%	54%	4%	0%	43%	0%	0%	0%	46%	30%	9%	11%	4%	
13.c	Service Linkage at Public Clinic Primary Care Program (a)	3,546	2,353	68%	31%	1%	52%	9%	1%	38%	0%	0%	0%	19%	24%	13%	37%	7%	
13.d	Service Linkage at CBO Primary Care Programs (a)	4,537	3,262	76%	21%	2%	48%	12%	2%	38%	0%	0%	4%	28%	27%	11%	25%	4%	
14	Transportation	2,366	1,119	71%	27%	2%	61%	10%	2%	26%	0%	0%	2%	16%	21%	11%	41%	8%	
14.a	Transportation Services - Urban	796	313	65%	33%	1%	56%	7%	3%	34%	0%	0%	3%	24%	25%	10%	28%	10%	
14.b	Transportation Services - Rural	237	103	66%	34%	0%	33%	30%	1%	36%	0%	0%	4%	17%	19%	14%	39%	7%	
14.c	Transportation vouchering	1,333	758	73%	25%	2%	68%	10%	2%	22%	0%	0%	2%	13%	19%	11%	47%	8%	
15	Linguistic Services (d)	NA	NA																
16	Emergency Financial Assistance (e)	1,830	1,243	77%	21%	2%	42%	9%	2%	48%	0%	0%	3%	24%	27%	12%	31%	2%	
17	Referral for Health Care - Non Core Service (d)	NA	NA																
Net unduplicated clients served - all categories*		12,941	12,141	75%	23%	2%	47%	13%	2%	38%	0%	0%	4%	24%	25%	11%	30%	6%	
Living AIDS cases + estimated Living HIV non-AIDS (from FY19 App) (b)		NA	30,198	30%	9%	1%	19%	5%	1%	30%	0%	0%	0%	10%	10%	4%	12%	3%	

FY 2023 Ryan White Part A and MAI Service Utilization Report

Date Range 3/1/23 - 9/30/23

RW MAI Service Utilization Report																		
Priority	Service Category MAI unduplicated served includes clients also served under Part A	Goal	Unduplicated MAI Clients Served YTD	Male	Female	Trans gender	AA (non- Hispanic)	White (non- Hispanic)	Other (non- Hispanic)	Hispanic	0-12	13-19	20-24	25-34	35-44	45-49	50-64	65 plus
	Outpatient/Ambulatory Primary Care (excluding Vision)																	
1.b	Primary Care - MAI CBO Targeted to AA (g)	1,664	1397	72%	25%	3%	99%	0%	1%	0%	0%	0%	6%	36%	27%	10%	18%	2%
1.c	Primary Care - MAI CBO Targeted to Hispanic (g)	1,380	1267	82%	14%	3%	0%	0%	0%	100%	0%	1%	5%	33%	27%	12%	20%	2%
2	Medical Case Management (f)	NA	NA															
2.c	Med CM - Targeted to AA (a)	967	422	67%	29%	4%	99%	0%	1%	0%	0%	1%	5%	28%	26%	12%	24%	5%
2.d	Med CM - Targeted to H/L(a)	735	266	83%	13%	4%	0%	0%	0%	100%	0%	0%	5%	28%	27%	10%	27%	2%
RW Part A New Client Service Utilization Report																		
Report reflects the number & demographics of clients served during the report period who did not receive services during previous 12 months																		
Priority	Service Category	Goal	Unduplicated New Clients Served YTD	Male	Female	Trans gender	AA (non- Hispanic)	White (non- Hispanic)	Other (non- Hispanic)	Hispanic	0-12	13-19	20-24	25-34	35-44	45-49	50-64	65 plus
1	Primary Medical Care	1,871	1131	19%	19%	3%	48%	10%	2%	40%	0%	1%	9%	36%	25%	10%	16%	3%
2	LPAP	954	489	83%	14%	3%	46%	10%	2%	42%	0%	1%	9%	37%	27%	10%	14%	2%
3.a	Clinical Case Management	95	52	81%	19%	0%	62%	10%	2%	27%	0%	2%	8%	19%	25%	6%	33%	8%
3.b-3.h	Medical Case Management	1,097	540	76%	21%	2%	49%	12%	1%	37%	0%	1%	8%	30%	24%	12%	20%	5%
3.i	Medical Case Management - Targeted to Veterans	33	3	67%	33%	0%	100%	0%	0%	0%	0%	0%	0%	0%	0%	33%	0%	67%
4	Oral Health	50	25	76%	24%	0%	40%	36%	0%	24%	0%	0%	8%	16%	28%	4%	36%	8%
12.a.	Non-Medical Case Management (Service Linkage)		1224	72%	27%	1%	53%	12%	1%	33%	0%	1%	7%	28%	25%	11%	23%	6%
12.c.		1,870																
12.d																		
12.b	Service Linkage at Testing Sites	92	49	71%	27%	2%	49%	4%	2%	45%	0%	6%	8%	33%	29%	8%	12%	4%
Footnotes:																		
(a)	Bundled Category																	
(b)	Age groups 13-19 and 20-24 combined together; Age groups 55-64 and 65+ combined together.																	
(d)	Funded by Part B and/or State Services																	
(e)	Total MCM served does not include Clinical Case Management																	
(f)	CBO Pcare targeted to AA (1.b) and HL (1.c) goals represent combined Part A and MAI clients served																	

2022 - 2023 DSHS State Services Service Utilization Report
9/1/2022 thru 08/31/2023 Houston HSDA
4th Quarter

Revised 9/6/2023

Funded Service	UDC		Gender				Race				Age Group							
	Goal	YTD	Male	Female	FTM	MTF	AA	White	Hisp	Other	0-12	13-19	20-24	25-34	35-44	45-49	50-64	65+
Health Insurance Premiums	925	1,534	80.40%	19.04%	0.16%	0.40%	35.00%	25.00%	30.00%	10.00%	0.00%	0.00%	1.30%	13.20%	20.40%	28.10%	29.00%	11.00%
Mental Health Services	192	104	96.30%	2.80%	0.00%	0.90%	29.80%	38.40%	31.80%	0.00%	0.00%	0.00%	1.90%	15.30%	26.26%	16.34%	32.60%	7.60%
Hospice	35	13	84.40%	15.40%	0.00%	0.00%	38.40%	38.40%	15.30%	7.90%	0.00%	0.00%	0.00%	0.00%	7.70%	30.80%	61.50%	0.00%
Non-Medical Case Management	315	24	74.84%	21.00%	0.00%	4.16%	50.00%	45.80%	0.00%	4.20%	0.00%	0.00%	4.22%	25.00%	16.66%	20.80%	29.10%	4.22%
Linguistic services	50	52	49.81%	49.81%	0.00%	0.38%	50.00%	7.60%	5.90%	36.50%	0.00%	0.00%	1.90%	5.70%	25.00%	40.40%	19.40%	7.60%
Unduplicated Clients Served By State Services Funds:	NA	1,727	77.15%	21.63%	0.04%	1.18%	40.64%	31.04%	16.60%	11.72%	0.00%	0.00%	1.86%	11.25%	19.20%	27.29%	34.32%	6.08%

Completed By: L.Ledezma

The Houston Regional HIV/AIDS Resource Group, Inc.
FY 2324 Ryan White Part B
Procurement Report
April 1, 2023 - March 31, 2024



Reflects spending through August 2023

Spending Target: 42%

Revised 9/27/23

Priority	Service Category	Original Allocation	% of Grant	Amendment*	Contractual Amount	Amendment	Contractual Amount	Date of Original	Expended YTD	Percent YTD
4	Oral Health Service-General	\$1,833,318	53%	\$0	\$1,833,318	\$0	\$1,833,318	4/1/2023	\$906,082	49%
4	Oral Health Service -Prosthodontics	\$576,750	17%	\$0	\$576,750	\$0	\$576,750	4/1/2023	\$298,952	52%
5	Health Insurance Premiums and Cost Sharing (1)	\$1,028,433	30%	\$0	\$1,028,433	\$0	\$1,028,433	4/1/2023	\$505,615	49%
		\$0	0%	\$0	\$0					
Total Houston HSDA		3,438,501	100%	0	3,438,501	\$0	\$3,438,501		1,710,649	50%

Note: Spending variances of 10% of target will be addressed:

(1) HIP- Funded by Part A, B and State Services. Provider spends grant funds by ending dates Part A -2/28; B-3/31;SS-8/31.

The Houston Regional HIV/AIDS Resource Group, Inc.
FY 2223 DSHS State Services
Procurement Report
September 1, 2022 - August 31, 2023



Chart reflects spending through August 2023

Spending Target: 100%

Revised 9/27/2023

Priority	Service Category	Original Allocation per	% of Grant	Amendments per RWPC	Contractual Amount	Amendment	Contractual Amount	Date of Original	Expended YTD	Percent YTD
5	Health Insurance Premiums and Cost Sharing (1)	\$864,506	47%	\$0	\$864,506	\$58,000	\$922,506	9/1/2022	\$1,047,774	114%
6	Mental Health Services (2)	\$300,000	16%	\$0	\$300,000	-\$45,000	\$255,000	9/1/2022	\$129,163	51%
11	Hospice	\$259,832	14%	\$0	\$259,832	\$77,000	\$336,832	9/1/2022	\$329,560	98%
13	Non Medical Case Management (4)	\$350,000	19%	\$0	\$350,000	-\$130,000	\$220,000	9/1/2022	\$189,410	86%
16	Linguistic Services (5)	\$68,000	4%	\$0	\$68,000	\$0	\$68,000	9/1/2022	\$54,944	81%
Total Houston HSDA		1,842,338	100%	\$0	\$1,842,338	-\$40,000	\$1,802,338		1,750,850	97%

Note

- (1) TRG will reallocate funds to avoid lapse in funds
- (2) TRG will reallocate funds to avoid lapse in funds
- (4) TRG will reallocate funds to avoid lapse in funds
- (5) TRG will reallocate funds to avoid lapse in funds

2023 QUARTERLY REPORT
PRIORITY AND ALLOCATIONS COMMITTEE
(Submitted October 2023)

Status of Committee Goals and Responsibilities (* means mandated by HRSA):

1. Conduct training to familiarize committee members with decision-making tools.
Status: **DONE**
2. Review the final quarter allocations made by the administrative agents.
Status: **IN PROGRESS**
3. *Improve the processes for and strengthen accountability in the FY 2024 priority-setting, allocations and subcategory allocations processes for Ryan White Parts A and B and State Services funding.
Status: **ONGOING**
4. When applicable, plan for specialty dollars like Minority AIDS Initiative (MAI) and special populations such as Women, Infants, Children and Youth (WICY) throughout the priority setting and allocation processes.
Status: **DONE**
5. *Determine the FY 2024 priorities, allocations and subcategory allocations for Ryan White Parts A and B and State Services funding.
Status: **COMPLETED**
6. *Review the FY 2023 priorities as needed.
Status: **ONGOING - COMPLETED**
7. *Review the FY 2023 allocations as needed.
Status: **ONGOING - COMPLETED**
8. Evaluate the processes used.
Status: **AS NEEDED**
9. Annually, review the status of Committee activities identified in the current Comprehensive Plan.
Status: **IN PROGRESS**

Status of Tasks on the Timeline:

RSC
Committee Chairperson

10/26/2023
Date

FY 2023 RW PART A REQUESTS FOR ALLOCATION INCREASE (OCTOBER 2023)

REVISED: 10/24/2023

Request Control Number	FY 2023 Priority Rank	HRSA Service Category	Local Service Category or Subcategory	Amount of Request	Amount Approved by RWPC	FY2022 Carryover Award	FY 2022 Final Contract Amount	Expended 2022	Percent Expended	FY 2023 Contract Amount	FY 2023 Expended YTD	FY 2023 Percent YTD	FY 2023 Percent Expected YTD	Is agency currently in compliance with contract conditions and therefore eligible for	Notes Amount approved detail:
1	1.b-1.d 2.c-2.e 3.b 13.d 15.a; 17	Outpatient/Ambulatory Health Services; Medical Case Management; Emergency Financial Assistance; Local Pharmacy Assistance; Non-Medical Case Management; Outreach	Community-based Primary Medical Care targeted to African American, Hispanic and White; Community-based Medical Case Management targeted to African American, Hispanic and White; EFA - Pharmacy; LPAP; Outreach; SLW	\$1,792,636		\$0	\$896,542	\$896,530	100%	\$958,911	\$405,500	43%	50%	Yes	
2	2.a	Medical Case Management	Clinical Case Management	\$77,000		\$63,063	\$244,328	\$382,355	134%	\$224,328	\$194,749	80%	50%	Yes	
3	1.b-1.d 2.c-2.e 3.b 13.d 15.a; 17	Outpatient/Ambulatory Health Services; Medical Case Management; Emergency Financial Assistance; Local Pharmacy Assistance; Non-Medical Case Management; Outreach	Community-based Primary Medical Care targeted to African American, Hispanic and White; Community-based Medical Case Management targeted to African American, Hispanic and White; EFA - Pharmacy; LPAP; Outreach; SLW	\$764,836		\$414,637	\$2,048,352	\$2,048,343	100%	\$2,020,920	\$1,044,597	52%	50%	Yes	

FY 2023 RW PART A REQUESTS FOR ALLOCATION INCREASE (OCTOBER 2023)

REVISED: 10/24/2023

Request Control Number	FY 2023 Priority Rank	HRSA Service Category	Local Service Category or Subcategory	Amount of Request	Amount Approved by RWPC	FY2022 Carryover Award	FY 2022 Final Contract Amount	Expended 2022	Percent Expended	FY 2023 Contract Amount	FY 2023 Expended YTD	FY 2023 Percent YTD	FY 2023 Percent Expected YTD	Is agency currently in compliance with contract conditions and therefore eligible for	Notes Amount approved detail:
4	5	Health Insurance Premium & Cost Sharing Assistance	Health Insurance Co-Payments & Co-Insurance	\$1,130,000		\$479,154	\$1,952,721	\$1,952,386	100%	\$1,606,359	\$803,175	50%	50%	Yes	
5	7	Medical Nutritional Therapy	Medical Nutritional Therapy & Supplements	\$79,000		\$0	\$341,395	\$339,519	100%	\$341,395	\$167,083	49%	50%	Yes	
				\$3,843,472		\$0	\$956,854	\$5,483,338		\$5,619,133					
Confirmed Funds Avail. for Reallocation				\$866,352											
Source of Funds Available for Reallocation:				Part A	Explanation: Unspent Admin, QM, and HIV Services for FY 23 program year (March 1-August 31, 2023)										
FY2023 Unspent Part A RWGA Admin, CQM, and Direct Services Funds															

Request for Service Category Increase
Ryan White Part A and MAI

A.	Name of Agency (not provided to RWPC)						
B.	Contract Number (not provided to RWPC)						
C.	Service Category Title (per RFP)	Pcare, MCM, SLW, LPAP, EFA, OUTRE, EHE				Control No. 1	
D.	Request for Increase under (check one):	Part A:	or	MAI:			
	Request Period (check one):	April:	July	Oct:	Final Qtr:		
E.	Amount of additional funding Requested:					\$1,792,635.81	
F.	Unit of Service: (list only those units and disbursements where an increase is requested)	a. Number of units in <u>current</u> contract:	b. Cost/unit	c. Number of <u>additional</u> units requested:	d. Total: (b x c)		
	1. Emergency Financial Assistance	2,900.48	\$40.00	863	\$34,500.00		
	2. Physician/Office Visits	672.21	\$345.00	1242	\$428,341.65		
	3. Medical Case Management	2,153.83	\$30.00	752	\$22,563.75		
	4. Service Linkage	634.80	\$25.00	658	\$16,450.00		
	5. LPAP	251.13	\$40.00	2084	\$83,370.00		
	6.		\$0.00		\$0.00		
	7.				\$0.00		
	8. Disbursements (list current amount in column a. and requested amount in column c.)	\$83,155.12	N/A	\$53,790.79	\$53,790.79		
	8. Disbursements (list current amount in column a. and requested amount in column c.) EFINA	\$348,057.75	N/A	\$1,122,274.10	\$1,122,274.10		
	8. Disbursements (list current amount in column a. and requested amount in column c.) LPAP	\$30,135.75	N/A	\$31,345.52	\$31,345.52		
	9. Total additional funding (must match E. above):					\$1,792,635.81	
G.	Number of new/additional clients to be served with requested increase.						
H.	Number of clients served under current contract - Agencies must use the CPCDMS to document numbers served. De-identified CPCDMS-generated reports will be provided to the RWPC by RWGA.	a. Number of clients served per CPCDMS	b. Percent AA (non-Hispanic)	c. Percent White (non-Hispanic)	d. Percent Hispanic (all races)	e. Percent Male	f. Percent Female
	1. Number of clients that received this service under Part A (or MAI) in FY 2022.* (March 1, 2022 - February 28, 2023) *If agency was funded for service under Part A (or MAI) in FY 2022 - if not, mark these cells as "NA"	1022	54%	13%	33%	79%	21%
	2. Number of clients that have received this service <u>under Part A</u> (or MAI) in FY 2023. a. April Request Period = Not Applicable b. July Request Period = 03/01/23 - 06/30/23 c. October Request Period = 03/01/23 - 09/30/23 d. 4th Qtr. Request Period = 03/01/23 - 11/30/23	600	56%	12%	32%	78%	22%
I.	Additional Information Provided by Requesting Agency (subject to audit by RWGA). Answer all questions that are applicable to agency's current situation.	a. Enter Number of Weeks in this column	b. How many Weeks will this be if full amount of request is received?	c. Comments (do not include agency name or identifying information):			
	1. Length of waiting time (in weeks) for an appointment for a new client:	0	0	None			

Request for Service Category Increase
Ryan White Part A and MAI

2. Length of waiting time (in weeks) for an appointment for a current client:	0	0	None
--	---	---	------

Request for Service Category Increase
Ryan White Part A and MAI

	3. Number of clients on a "waiting list" for services (per Part A SOC):	0	0	None	
	4. Number of clients unable to access services monthly (number unable to make an appointment) (per Part A SOC):	0	0	None	
J.	List all other sources and amounts of funding for similar services currently in place with agency: (As per email instructions, Section J is also to list any NP units)	a. Funding Source:	b. End Date of Contract:	c. Amount	d. Comment (50 words or less):
	1. EFA - Disbursements	Part A	2/29/24	\$742,563	Currently we have 292 units in NP Contract (March - August)
	2. Physician/Office Visits	Part A	2/29/24	\$257,326	Currently we have 598 units in NP Contract (March - August)
	3. Medical Case Management	Part A	2/29/24	\$10,968	Currently we have 365 units in NP Contract (March - August)
	4. Service Linkage	Part A	2/29/24	\$16,451	Currently we have 658 units in NP Contract (March - August)
	5. LPAP	Part A	2/29/24	\$102,552	Currently we have 1,818 units in NP Contract (March - August)
K.	Submit the following documentation at the same time as the request (budget narrative and fee-for-service budgets may be hard copy or fax):				
	Revised Budget Narrative (Table I.A.) corresponding to the revised contract total (amount in Item F.9.d. plus current contract amount).				
	This form must be submitted electronically via email by published deadline to Glenn Urbach: glenn.urbach@phs.hctx.net				

HARRIS COUNTY PUBLIC HEALTH AND ENVIRONMENTAL SERVICES - RWGA
SERVICE UTILIZATION REPORT

[Agency] █ [Grant] All [Service] ALL [Service Performer] 0
 Services performed between 3/1/23 and 8/31/23 Type Encounter

[Age Group] AgeGrp [expanded] (1) Inc, Exclude SubCat, INCLUDE

[Contract 1] 23GFN0389AANP [Sub Cats 1] All [Contract 2] 23GFN0389HNP [Sub Cats 2] All

[Contract 3] 23GFN0389WHTNP [Sub Cats 3] All

[Contract 4] 23GFN0389DRLGNP [Sub Cats 4] All [Contract 5] 23GFN0389FINANP [Sub Cats 5] All

[MHI] ALL [ShowDetail] False [Registration Type] ALL [NewClientOnly] No

*Control
 #1
 No Pay*

RACE	AGE	BIRTH GENDER							
		MALE		FEMALE		BOTH GENDERS			
		Hispanic	Non-Hisp	Hispanic	Non-Hisp	Hispanic	Non-Hisp		
AFRICAN AMERICAN	0-12	0	0	0	0	0	0	0	0
	13-19	4	1	2	0	0	4	1	2
	20-24	38	0	38	5	0	43	0	43
	25-34	202	0	199	20	0	222	0	222
	35-44	95	0	95	40	0	135	0	135
	45-54	26	0	26	29	0	55	0	55
	55-64	14	0	14	12	0	26	0	26
	65+	4	0	4	6	0	10	0	10
	SubTotals	383	0	383	112	0	495	0	495
ASIAN	0-12	0	0	0	0	0	0	0	0
	13-19	0	0	0	0	0	0	0	0
	20-24	1	0	1	0	0	1	0	1
	25-34	5	0	3	1	0	6	0	6
	35-44	3	0	3	1	0	4	0	4
	45-54	1	0	1	0	0	1	0	1
	55-64	1	0	1	0	0	1	0	1
	65+	0	0	0	0	0	0	0	0
	SubTotals	11	0	11	2	0	13	0	13
MULTI-RACE	0-12	0	0	0	0	0	0	0	0
	13-19	0	0	0	0	0	0	0	0
	20-24	1	1	0	1	0	2	1	1
	25-34	6	2	4	0	0	6	2	8
	35-44	3	1	2	0	0	3	1	4
	45-54	0	0	0	0	0	0	0	0
	55-64	0	0	0	0	0	0	0	0
	65+	0	0	0	0	0	0	0	0
	SubTotals	10	2	8	1	0	11	2	13
NATIVE AMERICAN	0-12	0	0	0	0	0	0	0	0
	13-19	0	0	0	0	0	0	0	0
	20-24	1	0	1	0	0	1	0	1
	25-34	0	0	0	0	0	0	0	0
	35-44	1	0	1	0	0	1	0	1
	45-54	1	0	1	0	0	1	0	1
	55-64	0	0	0	0	0	0	0	0
	65+	0	0	0	0	0	0	0	0
	SubTotals	2	0	2	0	0	2	0	2
WHITE	0-12	0	0	0	0	0	0	0	0
	13-19	3	0	3	0	0	3	0	3

RACE	AGE ²	BIRTH GENDER								
		MALE			FEMALE			BOTH GENDERS		
		Hispanic	Non-Hisp		Hispanic	Non-Hisp		Hispanic	Non-Hisp	
WHITE	20-24	30	27	3	2	2	0	32	29	3
	25-34	123	110	13	19	15	4	142	125	17
	35-44	61	50	11	11	11	0	72	61	11
	45-54	38	29	9	10	6	4	48	35	13
	55-64	37	23	14	5	4	1	42	27	15
	65+	5	3	2	1	1	0	6	4	2
	SubTotals:	297	245	52	48	39	9	345	284	61
ALL RACES	0-12	0	0	0	0	0	0	0	0	0
	13-19	7	4	3	0	0	0	7	4	3
	20-24	71	28	43	8	2	6	79	30	49
	25-34	336	115	221	40	15	25	376	130	246
	35-44	163	55	108	52	11	41	215	66	149
	45-54	66	29	37	39	6	33	105	35	70
	55-64	52	23	29	17	4	13	69	27	42
	65+	9	3	6	7	1	6	16	4	12
	SubTotals:	704	257	447	163	39	124	867	296	571

Clients Served This Period

Unduplicated clients:	867
Client visits: ³	3588
Spanish speaking (primary language at home) clients served:	178
Deaf/hard of hearing clients served:	9
Blind/sight impaired clients served:	17
Homeless clients served:	61
Transgender M to F clients served:	29
Transgender F to M clients served:	0
Clients served this period who live w/in Harris County:	821
Clients served this period who live outside Harris County:	46
Active substance abuse clients served:	6
Active psychiatric illness clients served:	14

Methods of Exposure (not mutually exclusive)

Perinatal Transmission	2
Hemophilia Coagulation	0
Transfusion	4
Heterosexual Contact	265
MSM (not IDU)	555
IV Drug Use (not MSM)	2
MSM/IDU	1
Multiple Exposure Categories	24
Other risk	60
Multi-Race Breakdown	
BLK,ASN	1
BLK,ASN,WHT	1
BLK,HWN,WHT	1
BLK,NTV	1
BLK,NTV,WHT	1
BLK,WHT	6

FOOTNOTES

¹ Visit = time spent per client per agency per service per day

² Age as of client max service date

³ If New Client = Yes is selected then clients were only included if they had no encounters (for the service, agency, and grant selected) in the twelve months prior to 3/1/2023; encounters (for the service, agency, and grant selected) may or may not have occurred prior to 03/01/22.

[4] Contracts, Subents, Service Performer, Grants, MAI ignored for SURTypes (Bus Voucher, Ride Share, Ending The Epidemic)

**HARRIS COUNTY PUBLIC HEALTH AND ENVIRONMENTAL SERVICES - RWGA
SERVICE UTILIZATION REPORT**

[Agency]: █████ [Grant]: All [Service]: ALL [Service Performer]: 0

Services performed between 3/1/23 and 8/31/23 | Type Encounter

[Age Group]: AgeGrp1 (expanded) [Include/Exclude SubCats]: INCLUDE

[Contract 1]: 23GEN0389AA [Sub Cats 1]: All [Contract 2]: 23GEN0389HL [Sub Cats 2]: All

[Contract 3]: 23GEN0389WHT [Sub Cats 3]: All

[Contract 4]: 23GEN0389DRUG [Sub Cats 4]: All [Contract 5]: 23GEN0389EFINA [Sub Cats 5]: All

[MAI]: ALL [ShowDetail]: False [Registration Type]: ALL [NewClientsOnly]: No ³

RACE	AGE ²	BIRTH GENDER									
		MALE			FEMALE			BOTH GENDERS			
		Hispanic	Non-Hisp		Hispanic	Non-Hisp		Hispanic	Non-Hisp		
AFRICAN AMERICAN	0-12	0	0	0	0	0	0	0	0	0	0
	13-19	1	0	1	0	0	0	1	0	1	
	20-24	26	0	26	4	0	4	30	0	30	
	25-34	138	1	137	19	0	19	157	1	156	
	35-44	57	4	53	36	1	35	93	5	88	
	45-54	16	0	16	22	0	22	38	0	38	
	55-64	10	0	10	9	0	9	19	0	19	
	65+	1	0	1	3	0	3	4	0	4	
	SubTotals:	249	5	244	93	1	92	342	6	336	
ASIAN	0-12	0	0	0	0	0	0	0	0	0	
	13-19	0	0	0	0	0	0	0	0	0	
	20-24	1	0	1	0	0	0	1	0	1	
	25-34	5	0	5	1	0	1	6	0	6	
	35-44	3	0	3	1	0	1	4	0	4	
	45-54	0	0	0	0	0	0	0	0	0	
	55-64	2	0	2	0	0	0	2	0	2	
	65+	0	0	0	0	0	0	0	0	0	
	SubTotals:	11	0	11	2	0	2	13	0	13	
MULTI-RACE	0-12	0	0	0	0	0	0	0	0	0	
	13-19	0	0	0	0	0	0	0	0	0	
	20-24	1	1	0	1	0	1	2	1	1	
	25-34	5	1	4	0	0	0	5	1	4	
	35-44	2	0	2	0	0	0	2	0	2	
	45-54	0	0	0	0	0	0	0	0	0	
	55-64	0	0	0	0	0	0	0	0	0	
	65+	0	0	0	0	0	0	0	0	0	
	SubTotals:	8	2	6	1	0	1	9	2	7	
NATIVE AMERICAN	0-12	0	0	0	0	0	0	0	0	0	
	13-19	0	0	0	0	0	0	0	0	0	
	20-24	1	0	1	0	0	0	1	0	1	
	25-34	0	0	0	0	0	0	0	0	0	
	35-44	0	0	0	0	0	0	0	0	0	
	45-54	1	0	1	0	0	0	1	0	1	
	55-64	0	0	0	0	0	0	0	0	0	
	65+	0	0	0	0	0	0	0	0	0	
	SubTotals:	2	0	2	0	0	0	2	0	2	
WHITE	0-12	0	0	0	0	0	0	0	0	0	
	13-19	2	2	0	0	0	0	2	2	0	

RACE	AGE ²	BIRTH GENDER								
		MALE			FEMALE			BOTH GENDERS		
		Hispanic	Non-Hisp		Hispanic	Non-Hisp		Hispanic	Non-Hisp	
WHITE	20-24	17	14	3	0	0	0	17	14	3
	25-34	83	73	10	16	12	4	99	85	14
	35-44	40	31	9	9	7	2	49	38	11
	45-54	25	16	9	5	3	2	30	19	11
	55-64	27	17	10	4	4	0	31	21	10
	65+	5	2	3	1	1	0	6	3	3
	SubTotals:	199	155	44	35	27	8	234	182	52
ALL RACES	0-12	0	0	0	0	0	0	0	0	0
	13-19	3	2	1	0	0	0	3	2	1
	20-24	46	15	31	5	0	5	51	15	36
	25-34	231	75	156	36	12	24	267	87	180
	35-44	102	35	67	46	8	38	148	43	105
	45-54	42	16	26	27	3	24	69	19	50
	55-64	39	17	22	13	4	9	52	21	31
	65+	6	2	4	4	1	3	10	3	7
	SubTotals:	469	162	307	131	28	103	600	190	410

Clients Served This Period

Unduplicated clients:	600
Client visits: ³	998
Spanish speaking (primary language at home) clients served:	117
Deaf/hard of hearing clients served:	4
Blind/sight impaired clients served:	16
Homeless clients served:	39
Transgender M to F clients served:	20
Transgender F to M clients served:	1
Clients served this period who live w/in Harris County:	569
Clients served this period who live outside Harris County:	31
Active substance abuse clients served:	6
Active psychiatric illness clients served:	14

Methods of Exposure (not mutually exclusive)

PerinatalTransmission	3
Hemophilia Coagulation	0
Transfusion	4
Heterosexual Contact	193
MSM (not IDU)	370
IV Drug Use (not MSM)	2
MSM/IDU	1
Multiple Exposure Categories	16
Other risk	41
<u>Multi-Race Breakdown</u>	
BLK,ASN	1
BLK,ASN,WHT	1
BLK,HWN,WHT	1
BLK,NTV,WHT	1
BLK,WHT	5

FOOTNOTES

¹ Visit = time spent per client per agency per servicee per day

² Age as of client max service date

³ If New Client = Yes is selected then clients were only included if they had no encounters (for the service, agency, and grant selected) in the twelve months prior to 3/1/2023; encounters (for the service, agency, and grant selected) may or may not have occurred prior to 03/01/22.

[4] Contracts, Subcats, Service Performer, Grants, MAI ignored for SURTypes (Bus Voucher, Ride Share, Ending The Epidemic)

HARRIS COUNTY PUBLIC HEALTH AND ENVIRONMENTAL SERVICES - RWGA
SERVICE UTILIZATION REPORT

CONTROL #1
NO PAY
OUTREACH

[Agency]: █████ [Grant]: All [Service]: ALL [Service Performer]: 0
 Services performed between 3/1/23 and 8/31/23 | Type Encounter
 [Age Group]: AgeGrp1 (expanded) [Include/Exclude SubCats]: INCLUDE
 [Contract 1]: 23GEN0389OUTRENP [Sub Cats 1]: All [Contract 2]: n/a [Sub Cats 2]: All
 [Contract 3]: n/a [Sub Cats 3]: All
 [Contract 4]: n/a [Sub Cats 4]: All [Contract 5]: n/a [Sub Cats 5]: All
 [MAI]: ALL [ShowDetail]: False [Registration Type]: ALL [NewClientsOnly]: No

RACE	AGE ²	BIRTH GENDER									
		MALE			FEMALE			BOTH GENDERS			
		Hispanic	Non-Hisp		Hispanic	Non-Hisp		Hispanic	Non-Hisp		
AFRICAN AMERICAN	0-12	0	0	0	0	0	0	0	0	0	0
	13-19	0	0	0	0	0	0	0	0	0	0
	20-24	14	0	14	1	0	1	15	0	15	
	25-34	43	0	43	8	0	8	51	0	51	
	35-44	13	0	13	6	1	5	19	1	18	
	45-54	1	0	1	10	0	10	11	0	11	
	55-64	0	0	0	1	0	1	1	0	1	
	65+	1	0	1	1	0	1	2	0	2	
	SubTotals:	72	0	72	27	1	26	99	1	98	
MULTI-RACE	0-12	0	0	0	0	0	0	0	0	0	
	13-19	0	0	0	0	0	0	0	0	0	
	20-24	0	0	0	0	0	0	0	0	0	
	25-34	1	0	1	0	0	0	1	0	1	
	35-44	0	0	0	0	0	0	0	0	0	
	45-54	0	0	0	0	0	0	0	0	0	
	55-64	0	0	0	0	0	0	0	0	0	
	65+	0	0	0	0	0	0	0	0	0	
	SubTotals:	1	0	1	0	0	0	1	0	1	
WHITE	0-12	0	0	0	0	0	0	0	0	0	
	13-19	0	0	0	0	0	0	0	0	0	
	20-24	2	2	0	0	0	0	2	2	0	
	25-34	15	11	4	2	2	0	17	13	4	
	35-44	5	3	2	3	3	0	8	6	2	
	45-54	0	0	0	1	0	1	1	0	1	
	55-64	4	1	3	1	0	1	5	1	4	
	65+	0	0	0	0	0	0	0	0	0	
	SubTotals:	26	17	9	7	5	2	33	22	11	
ALL RACES	0-12	0	0	0	0	0	0	0	0	0	
	13-19	0	0	0	0	0	0	0	0	0	
	20-24	16	2	14	1	0	1	17	2	15	
	25-34	59	11	48	10	2	8	69	13	56	
	35-44	18	3	15	9	4	5	27	7	20	
	45-54	1	0	1	11	0	11	12	0	12	
	55-64	4	1	3	2	0	2	6	1	5	
	65+	1	0	1	1	0	1	2	0	2	
	SubTotals:	99	17	82	34	6	28	133	23	110	

Clients Served This Period

Unduplicated clients:	133
Client visits: ³	232
Spanish speaking (primary language at home) clients served:	7
Deaf/hard of hearing clients served:	0
Blind/sight impaired clients served:	2
Homeless clients served:	19
Transgender M to F clients served:	6
Transgender F to M clients served:	0
Clients served this period who live w/in Harris County:	124
Clients served this period who live outside Harris County:	9
Active substance abuse clients served:	2
Active psychiatric illness clients served:	3

Methods of Exposure (not mutually exclusive)

Perinatal Transmission	3
Hemophilia Coagulation	0
Transfusion	0
Heterosexual Contact	43
MSM (not IDU)	81
IV Drug Use (not MSM)	1
MSM/IDU	0
Multiple Exposure Categories	3
Other risk	8
<u>Multi-Race Breakdown</u>	
BLK, HWN, WHT	1

FOOTNOTES

¹ Visit = time spent per client per agency per service per day

² Age as of client max service date

³ If New Client = Yes is selected then clients were only included if they had no encounters (for the service, agency, and grant selected) in the twelve months prior to 3/1/2023; encounters (for the service, agency, and grant selected) may or may not have occurred prior to 03/01/22.

[4] Contracts, Subcats, Service Performer, Grants, MAI ignored for SURTypes (Bus Voucher, Ride Share, Ending The Epidemic)

Request for Service Category Increase
Ryan White Part A and MAI

A.	Name of Agency (not provided to RWPC)							
B.	Contract Number (not provided to RWPC)							
C.	Service Category Title (per RFP)	Medical Case Management/Clinical Case Management			Control No.	2		
D.	Request for Increase under (check one):	Part A: <input checked="" type="checkbox"/>	or	MAI: <input type="checkbox"/>				
	Request Period (check one):	April: <input type="checkbox"/>	July <input type="checkbox"/>	Oct: <input type="checkbox"/>	Final Qtr: <input type="checkbox"/>			
E.	Amount of additional funding Requested:					X		
F.	Unit of Service: (list only those units and disbursements where an increase is requested)	a. Number of units in <u>current</u> contract:	b. Cost/unit	c. Number of <u>additional</u> units requested:	d. Total: (b x c)			
	1. Clinical Case Management	8489	\$40.00	1925	\$77,000.00			
	2.				\$0.00			
	3.				\$0.00			
	4.				\$0.00			
	5.				\$0.00			
	6.				\$0.00			
	7.				\$0.00			
	8. Disbursements (list current amount in column a. and requested amount in column c.)		N/A		<u>\$0.00</u>			
	9. Total additional funding (must match E. above):				\$77,000.00			
G.	Number of new/additional clients to be served with requested increase.	70						
H.	Number of clients served under current contract - Agencies must use the CPCDMS to document numbers served. De-identified CPCDMS-generated reports will be provided to the RWPC by RWGA.	a. Number of clients served per CPCDMS	b. Percent AA (non-Hispanic)	c. Percent White (non-Hispanic)	d. Percent Hispanic (all races)	e. Percent Male	f. Percent Female	
	1. Number of clients that received this service under Part A (or MAI) in FY 2022.* (March 1, 2022 - February 28, 2023) *If agency was funded for service under Part A (or MAI) in FY 2022 - if not, mark these cells as "NA"	246	58%	22%	19%	80%	20%	
	2. Number of clients that have received this service <u>under Part A</u> (or MAI) in FY 2023. a. April Request Period = Not Applicable b. July Request Period = 03/01/23 - 06/30/23 c. October Request Period = 03/01/23 - 09/30/23 d. 4th Qtr. Request Period = 03/01/23 - 11/30/23	182	58%	22%	18%	78%	22%	

Request for Service Category Increase
Ryan White Part A and MAI

I.	Additional Information Provided by Requesting Agency (subject to audit by RWGA). Answer all questions that are applicable to agency's current situation.	a. Enter Number of Weeks in this column	b. How many Weeks will this be if full amount of request is received?	c. Comments (do not include agency name or identifying information):	
	1. Length of waiting time (in weeks) for an appointment for a new client:	1	0	however, there will be a waitlist if we cannot get an increase because we will have to transfer staff to other projects. The current allocation is not sufficient to support 3 CCMs. The current allocation only supports 12.6 hours of service per CCM per week	
	2. Length of waiting time (in weeks) for an appointment for a current client:	1	0	however, there will be a waitlist if we cannot get an increase because we will have to transfer staff to other projects. The current allocation is not sufficient to support 3 CCMs. The current allocation only supports 12.6 hours of service per CCM per week	
	3. Number of clients on a "waiting list" for services (per Part A SOC):	0	0	however, there will be a waitlist if we cannot get an increase because we will have to transfer staff to other projects. The current allocation is not sufficient to support 3 CCMs. The current allocation only supports 12.6 hours of service per CCM per week	
	4. Number of clients unable to access services monthly (number unable to make an appointment) (per Part A SOC):	0	0	however, there will be a waitlist if we cannot get an increase because we will have to transfer staff to other projects. The current allocation is not sufficient to support 3 CCMs. The current allocation only supports 12.6 hours of service per CCM per week	
J.	List all other sources and amounts of funding for similar services currently in place with agency: (As per email instructions, Section J is also to list any NP units)	a. Funding Source:	b. End Date of Contract:	c. Amount	d. Comment (50 words or less):
	1. Resource Group case management for SUD consumers - non-licensed CMs	TRG	8/31/23	\$275,000	only consumers with an SUD history
K.	Submit the following documentation at the same time as the request (budget narrative and fee-for-service budgets may be hard copy or fax):				
	Revised Budget Narrative (Table I.A.) corresponding to the revised contract total (amount in Item F.9.d. plus current contract amount).				
	This form must be submitted electronically via email by published deadline to Glenn Urbach: glenn.urbach@phs.hctx.net				

Control #2

HARRIS COUNTY PUBLIC HEALTH AND ENVIRONMENTAL SERVICES - RWGA
SERVICE UTILIZATION REPORT

[Agency] █████ [Grant] RW1 [Service] ALL [Service Performer] 0
 Services performed between 1/1/22 and 1/28/23 Type Encounter
 [Age Group] AgeGrp1 (expanded) [Include/Exclude Sub-Cats] INCLUDE
 [Contract 1] 22GFN0503 [Sub-Cats 1] All [Contract 2] n/a [Sub-Cat-2] All
 [Contract 3] n/a [Sub-Cats 3] All
 [Contract 4] n/a [Sub-Cats 4] All [Contract 5] n/a [Sub-Cats 5] All
 [MHI] ALL [ShowData] 0 [Registration Type] ALL [New/Ret-Only] No

RACE	AGE?	BIRTH GENDER								
		MALE			FEMALE			BOTH GENDERS		
		Hispanic	Non-Hisp		Hispanic	Non-Hisp		Hispanic	Non-Hisp	
AFRICAN AMERICAN	0-12	0	0	0	0	0	0	0	0	0
	13-19	1	0	0	0	0	0	1	0	0
	20-24	3	0	0	0	0	0	3	0	0
	25-34	14	0	13	1	0	1	15	1	14
	35-44	24	0	24	7	0	7	31	0	31
	45-54	22	1	21	12	0	12	34	1	33
	55-64	38	0	38	11	0	11	49	0	49
	65+	7	0	7	5	0	5	12	0	12
	Sub Totals:	109	2	107	39	0	39	145	2	143
ASIAN	0-12	0	0	0	0	0	0	0	0	0
	13-19	0	0	0	0	0	0	0	0	0
	20-24	0	0	0	0	0	0	0	0	0
	25-34	0	0	0	0	0	0	0	0	0
	35-44	0	0	0	0	0	0	0	0	0
	45-54	0	0	0	0	0	0	0	0	0
	55-64	1	0	1	0	0	0	1	0	1
	65+	0	0	0	0	0	0	0	0	0
	Sub Totals:	1	0	1	0	0	0	1	0	1
MULTI-RACE	0-12	0	0	0	0	0	0	0	0	0
	13-19	0	0	0	0	0	0	0	0	0
	20-24	0	0	0	0	0	0	0	0	0
	25-34	1	1	0	0	0	0	1	1	0
	35-44	0	0	0	0	0	0	0	0	0
	45-54	0	0	0	0	0	0	0	0	0
	55-64	0	0	0	0	0	0	0	0	0
	65+	0	0	0	0	0	0	0	0	0
	Sub Totals:	1	1	0	0	0	0	1	1	0
NATIVE AMERICAN	0-12	0	0	0	0	0	0	0	0	0
	13-19	0	0	0	0	0	0	0	0	0
	20-24	0	0	0	0	0	0	0	0	0
	25-34	0	0	0	0	0	0	0	0	0
	35-44	0	0	0	0	0	0	0	0	0
	45-54	0	0	0	0	0	0	0	0	0
	55-64	2	1	1	0	0	0	2	1	1
	65+	0	0	0	0	0	0	0	0	0
	Sub Totals:	2	1	1	0	0	0	2	1	1
WHITE	0-12	0	0	0	0	0	0	0	0	0
	13-19	0	0	0	1	0	0	1	0	0

RACE	AGE ²	BIRTH GENDER								
		MALE			FEMALE			BOTH GENDERS		
		Hispanic	Non-Hisp		Hispanic	Non-Hisp		Hispanic	Non-Hisp	
WHITE	20-24	0	0	0	0	0	0	0	0	0
	25-34	8	7	1	0	0	0	8	7	1
	35-44	8	5	3	4	3	1	12	8	4
	45-54	22	9	13	1	1	0	23	10	13
	55-64	33	11	22	5	3	2	38	14	24
	65+	13	2	11	2	0	2	15	2	13
	SubTotals:	84	34	50	13	8	5	97	42	55
ALL RACES	0-12	0	0	0	0	0	0	0	0	0
	13-19	1	0	1	1	1	0	2	1	1
	20-24	3	0	3	0	0	0	3	0	3
	25-34	23	9	14	1	0	1	24	9	15
	35-44	32	5	27	11	3	8	43	8	35
	45-54	44	10	34	13	1	12	57	11	46
	55-64	74	12	62	16	3	13	90	15	75
	65+	20	2	18	7	0	7	27	2	25
	SubTotals:	197	38	159	49	8	41	246	46	200

Clients Served This Period

Unduplicated clients:	246
Client visits: ³	3041
Spanish speaking (primary language at home) clients served:	19
Deaf/hard of hearing clients served:	5
Blind/sight impaired clients served:	5
Homeless clients served:	33
Transgender M to F clients served:	7
Transgender F to M clients served:	0
Clients served this period who live w/in Harris County:	242
Clients served this period who live outside Harris County:	4
Active substance abuse clients served:	2
Active psychiatric illness clients served:	8

Methods of Exposure (not mutually exclusive)

PerinatalTransmission	1
Hemophilia Coagulation	0
Transfusio	1
Heterosexual Contact	63
MSM (not IDU)	112
IV Drug Use (not MSM)	7
MSM/IDU	3
Multiple Exposure Categories	10
Other risk	58
Multi-Race Breakdown	
BLK,WHT	1

FOOTNOTES

¹ Visit = time spent per client per agency per service per day

² Age as of client max service date

³ If New Client = Yes is selected then clients were only included if they had no encounters (for the service, agency, and grant selected) in the twelve months prior to 3/1/2022; encounters (for the service, agency, and grant selected) may or may not have occurred prior to 03/01/21.

[4] Contracts, Subcats, Service Performer, Grants, MAI ignored for SURTypes (Bus Voucher, Ride Share, Ending The Epidemic)

CONTROL #2

HARRIS COUNTY PUBLIC HEALTH AND ENVIRONMENTAL SERVICES - RWGA
SERVICE UTILIZATION REPORT

[Agency]: █████ [Grant] RW1 [Service] ALL [Service Performer] 0
 Services performed between 3/1/25 and 6/30/25 Type Encounter
 [Age Group] AgeGrp1 (expanded)-Include Levelside SubCars] INCLUDE
 [Contract 1] 23GEN0375 [Sub-Cats 1] All [Contract 2] n/a [Sub-Cats 2] All
 [Contract 3] n/a [Sub-Cats 3] All
 [Contract 4] n/a [Sub-Cats 4] All [Contract 5] n/a [Sub-Cats 5] All
 [MHI] ALL [ShowDetail]: True [Registration Type] ALL [NewClientsOnly] No

RACE	AGE ¹	BIRTH GENDER								
		MALE			FEMALE			BOTH GENDERS		
		Hispanic	Non-Hisp		Hispanic	Non-Hisp		Hispanic	Non-Hisp	
AFRICAN AMERICAN	0-12	0	0	0	0	0	0	0	0	0
	13-19	0	0	0	0	0	0	0	0	0
	20-24	1	0	1	0	0	0	1	0	1
	25-34	12	0	12	1	0	1	13	0	13
	35-44	16	0	16	1	0	1	17	0	17
	45-54	10	0	10	12	0	12	22	0	22
	55-64	27	0	27	12	0	12	39	0	39
	65+	9	0	9	5	0	5	14	0	14
	SubTotals:	75	0	75	31	0	31	106	0	106
ASIAN	0-12	0	0	0	0	0	0	0	0	0
	13-19	0	0	0	0	0	0	0	0	0
	20-24	0	0	0	0	0	0	0	0	0
	25-34	0	0	0	0	0	0	0	0	0
	35-44	0	0	0	0	0	0	0	0	0
	45-54	0	0	0	0	0	0	0	0	0
	55-64	0	0	0	0	0	0	0	0	0
	65+	0	0	0	1	0	1	1	0	1
	SubTotals:	0	0	0	1	0	1	1	0	1
MULTI-RACE	0-12	0	0	0	0	0	0	0	0	0
	13-19	0	0	0	0	0	0	0	0	0
	20-24	0	0	0	0	0	0	0	0	0
	25-34	2	1	3	0	0	0	2	1	3
	35-44	0	0	0	0	0	0	0	0	0
	45-54	0	0	0	0	0	0	0	0	0
	55-64	0	0	0	0	0	0	0	0	0
	65+	1	1	2	0	0	0	1	1	2
	SubTotals:	3	2	5	0	0	0	3	2	5
NATIVE AMERICAN	0-12	0	0	0	0	0	0	0	0	0
	13-19	0	0	0	0	0	0	0	0	0
	20-24	0	0	0	0	0	0	0	0	0
	25-34	0	0	0	0	0	0	0	0	0
	35-44	1	1	2	0	0	0	1	1	2
	45-54	0	0	0	0	0	0	0	0	0
	55-64	2	0	2	0	0	0	2	0	2
	65+	0	0	0	0	0	0	0	0	0
	SubTotals:	3	1	4	0	0	0	3	0	3
WHITE	0-12	0	0	0	0	0	0	0	0	0
	13-19	0	0	0	0	0	0	0	0	0

RACE	AGE ²	BIRTH GENDER								
		MALE			FEMALE			BOTH GENDERS		
		Hispanic	Non-Hisp		Hispanic	Non-Hisp		Hispanic	Non-Hisp	
WHITE	20-24	0	0	0	0	0	0	0	0	0
	25-34	2	1	1	0	0	0	2	1	1
	35-44	5	4	1	1	1	0	6	5	1
	45-54	18	5	13	1	1	0	19	6	13
	55-64	27	12	15	5	3	2	32	15	17
	65+	9	2	7	1	0	1	10	2	8
	SubTotals:		61	24	37	8	5	3	69	29
ALL RACES	0-12	0	0	0	0	0	0	0	0	0
	13-19	0	0	0	0	0	0	0	0	0
	20-24	1	0	1	0	0	0	1	0	1
	25-34	16	2	14	1	0	1	17	2	15
	35-44	22	5	17	2	1	1	24	6	18
	45-54	28	5	23	13	1	12	41	6	35
	55-64	56	13	43	17	3	14	73	16	57
	65+	19	3	16	7	0	7	26	3	23
SubTotals:		142	28	114	40	5	35	182	33	149

Clients Served This Period

Unduplicated clients:	182
Client visits: ³	1516
Spanish speaking (primary language at home) clients served:	12
Deaf/hard of hearing clients served:	5
Blind/sight impaired clients served:	2
Homeless clients served:	24
Transgender M to F clients served:	6
Transgender F to M clients served:	0
Clients served this period who live w/in Harris County:	178
Clients served this period who live outside Harris County:	4
Active substance abuse clients served:	1
Active psychiatric illness clients served:	6

Methods of Exposure (not mutually exclusive)

PerinatalTransmission	0
Hemophilia Coagulation	0
Transfusion	3
Heterosexual Contact	52
MSM (not IDU)	72
IV Drug Use (not MSM)	6
MSM/IDU	2
Multiple Exposure Categories	12
Other risk	50
<u>Multi-Race Breakdown</u>	
BLK,NTV	1
BLK,WHT	2

FOOTNOTES

¹ Visit = time spent per client per agency per service per day

² Age as of client max service date

³ If New Client = Yes is selected then clients were only included if they had no encounters (for the service, agency, and grant selected) in the twelve months prior to 3/1/2023; encounters (for the service, agency, and grant selected) may or may not have occurred prior to 03/01/22.

[4] Contracts, Subcats, Service Performer, Grants, MAI ignored for SURTypes (Bus Voucher, Ride Share, Ending The Epidemic)

Request for Service Category Increase
Ryan White Part A and MAI

A.	Name of Agency (not provided to RWPC)						
B.	Contract Number (not provided to RWPC)						
C.	Service Category Title (per RFP)	URBAN PCARE				Control No.	3
D.	Request for Increase under (check one):	Part A: <input checked="" type="checkbox"/>	or	MAI:			
	Request Period (check one):	April:	July:	Oct: <input checked="" type="checkbox"/>	Final Qtr:		
E.	Amount of additional funding Requested:						
F.	Unit of Service: (list only those units and disbursements where an increase is requested)	a. Number of units in <u>current</u> contract:	b. Cost/unit	c. Number of <u>additional</u> units requested:	d. Total: (b x c)		
	1 INFEC/PHEXT	4418.84	\$275.00	509	\$139,975.00		
	2 NUTRITION	314.4	\$150.00	401	\$60,150.00		
	3 LPAP TRANSACTIONS	2088.9665	\$30.00	3686	\$110,580.00		
	4				\$0.00		
	5				\$0.00		
	6. LPAP MEDS Disbursements (list current amount in column a. and requested amount in column c.)	\$170,087.00	N/A	\$ 44,193.29	<u>\$44,193.29</u>		
	7. EFINA MEDS Disbursements (list current amount in column a. and requested amount in column c.)	\$269,666.30	N/A	\$ 359,937.57	<u>\$359,937.57</u>		
	8. DIAG Disbursements (list current amount in column a. and requested amount in column c.)	\$93.08	N/A	\$50,000.00	<u>\$50,000.00</u>		
	9. Total additional funding (must match E. above):					\$764,835.86	
G.	Number of new/additional clients to be served with requested increase.	110					
H.	Number of clients served under current contract - Agencies must use the CPCDMS to document numbers served. De-identified CPCDMS-generated reports will be provided to the RWPC by RWGA.	a. Number of clients served per CPCDMS	b. Percent AA (non-Hispanic)	c. Percent White (non-Hispanic)	d. Percent Hispanic (all races)	e. Percent Male	f. Percent Female
	1. Number of clients that received this service under Part A (or MAI) in FY 2022.* (March 1, 2022 - February 28, 2023) *If agency was funded for service under Part A (or MAI) in FY 2022 - if not, mark these cells as "NA"	2640	61%	7%	29%	75%	25%

Request for Service Category Increase
Ryan White Part A and MAI

2. Number of clients that have received this service <u>under Part A</u> (or MAI) in FY 2023. a. April Request Period = Not Applicable b. July Request Period = 03/01/23 - 06/30/23 c. October Request Period = 03/01/23 - 09/30/23 d. 4th Qtr. Request Period = 03/01/23 - 11/30/23	1927	55%	7%	35%	78%	22%
--	------	-----	----	-----	-----	-----

Request for Service Category Increase
Ryan White Part A and MAI

I.	Additional Information Provided by Requesting Agency (subject to audit by RWGA). Answer all questions that are applicable to agency's current situation.	a. Enter Number of Weeks in this column	b. How many Weeks will this be if full amount of request is received?	c. Comments (do not include agency name or identifying information):	
	1. Length of waiting time (in weeks) for an appointment for a new client:	1-2weeks	0-1 week	The demand for same-day appointments for new patients is rising steadily. Daily, newly diagnosed or out-of-care patients are linked to care, but we still have a limited number of same-day appointment spaces for new patients. Each month, we see an average of 20 to 25 new patients or return to care patients. With additional funding, we could lower new patient appointment wait times from the current 1-2 weeks to 0-1 week. We are currently holding \$859,005.14 in unbilled services that we are unable to bill for. EFINA Meds NP = \$259,937.57 Nutrition NP \$51150 (341 units) Medial Visits = \$292875 (1065 units) LPAP Transactions = \$55830 (1861 units) LPAP Med = \$44193.29 Diagnostics = \$24,532.48	
	2. Length of waiting time (in weeks) for an appointment for a current client:	1-1.5 weeks	0 weeks	With a funding increase, existing patients could be seen within the same week.	
	3. Number of clients on a "waiting list" for services (per Part A SOC):	0	0	There is currently no waiting list, as we have been able to continue scheduling all patients for requested appointments	
	4. Number of clients unable to access services monthly (number unable to make an appointment) (per Part A SOC):	0	0	There are no clients who are unable to access services on a monthly basis.	
J.	List all other sources and amounts of funding for similar services currently in place with agency: (As per email instructions, Section J is also to list any NP units)	a. Funding Source:	b. End Date of Contract:	c. Amount	d. Comment (50 words or less):
	1.Ryan White Part A 23GEN0416NP	RWGA	2/28/24	\$732,126	\$859,005.14 in no pay for services that have been delivered and cannot be billed
	2.				
	3.				

Request for Service Category Increase
Ryan White Part A and MAI

4.				
K.	Submit the following documentation at the same time as the request (budget narrative and fee-for-service budgets may be hard copy or fax):			
	Revised Budget Narrative (Table I.A.) corresponding to the revised contract total (amount in Item F.9.d. plus current contract amount).			
	This form must be submitted electronically via email by published deadline to Glenn Urbach: glenn.urbach@phs.hctx.net			

CONTROL
#3

HARRIS COUNTY PUBLIC HEALTH AND ENVIRONMENTAL SERVICES RWGA
SERVICE UTILIZATION REPORT

[Agency] █ [Grant] All [Service] ALL [Service Performer] 0
Services performed between 5/1/22 and 2/28/23 - Type Encounter

[Age Group] AgeGrp [Expanded] [Include/Exclude Sub-Cats] INCLUDE

[Contract 1] 22GEN0593AA [Sub-Cats 1] All [Contract 2] 22GEN0593HI [Sub-Cats 2] All

[Contract 3] 22GEN0593WHIT [Sub-Cats 3] All

[Contract 4] 22GEN0593LFTNA [Sub-Cats 4] All [Contract 5] 22GEN0593DRUG [Sub-Cats 5] All

[MHI] ALL [ShowDetail] False [Registration Type] ALL [New/Churn/Only] No

RACE	AGE*	BIRTH GENDER								
		MALE			FEMALE			BOTH GENDERS		
		Hispanic	Non-Hisp		Hispanic	Non-Hisp		Hispanic	Non-Hisp	
AFRICAN AMERICAN	0-12	0	0	0	0	0	0	0	0	0
	13-19	4	0	4	2	2	0	6	2	4
	20-24	62	4	66	13	0	13	75	4	79
	25-34	438	4	442	90	5	85	528	19	547
	35-44	309	5	314	150	7	142	459	15	474
	45-54	171	6	177	157	3	154	318	9	327
	55-64	124	1	125	81	1	80	205	2	203
	65+	36	1	37	22	0	22	58	0	58
	SubTotals	1,144	38	1,182	513	14	501	1,659	52	1,607
ASIAN	0-12	0	0	0	0	0	0	0	0	0
	13-19	0	0	0	0	0	0	0	0	0
	20-24	0	0	0	0	0	0	0	0	0
	25-34	12	0	12	0	0	0	12	0	12
	35-44	8	0	8	3	0	3	11	0	11
	45-54	7	0	7	1	0	1	8	0	8
	55-64	5	0	5	0	0	0	5	0	5
	65+	0	0	0	1	0	1	1	0	1
	SubTotals	42	0	42	5	0	5	47	0	47
MULTI-RACE	0-12	0	0	0	0	0	0	0	0	0
	13-19	1	0	1	0	0	0	1	0	1
	20-24	0	0	0	0	0	0	0	0	0
	25-34	8	3	5	4	0	1	12	3	9
	35-44	4	0	4	1	0	1	5	0	5
	45-54	2	0	2	2	1	1	4	1	3
	55-64	4	0	3	0	0	0	4	1	3
	65+	0	0	0	0	0	0	0	0	0
	SubTotals	19	3	15	7	1	6	26	5	21
NATIVE AMERICAN	0-12	0	0	0	0	0	0	0	0	0
	13-19	0	0	0	0	0	0	0	0	0
	20-24	0	0	0	0	0	0	0	0	0
	25-34	3	0	3	1	0	1	4	0	4
	35-44	5	1	3	2	0	2	5	0	5
	45-54	1	0	1	0	0	0	1	0	1
	55-64	0	0	0	1	0	1	1	0	1
	65+	0	0	0	0	0	0	0	0	0
	SubTotals	7	1	6	4	0	4	11	1	10
PAC ISLAND HAWAII	0-12	0	0	0	0	0	0	0	0	0
	13-19	0	0	0	0	0	0	0	0	0

RACE	AGE ²	BIRTH GENDER								
		MALE			FEMALE			BOTH GENDERS		
		Hispanic	Non-Hisp		Hispanic	Non-Hisp		Hispanic	Non-Hisp	
PAC.ISLND/HAWAII	20-24	0	0	0	0	0	0	0	0	0
	25-34	0	0	0	0	0	0	0	0	0
	35-44	1	0	1	0	0	0	1	0	1
	45-54	0	0	0	0	0	0	0	0	0
	55-64	0	0	0	0	0	0	0	0	0
	65+	1	0	1	1	0	1	2	0	2
	SubTotals:	2	0	2	1	0	1	3	0	3
WHITE	0-12	0	0	0	0	0	0	0	0	0
	13-19	0	0	0	0	0	0	0	0	0
	20-24	42	37	5	1	1	0	43	38	5
	25-34	252	218	34	18	14	4	270	232	38
	35-44	233	195	38	43	34	9	276	229	47
	45-54	137	101	36	47	30	17	184	131	53
	55-64	93	58	35	20	15	5	113	73	40
	65+	12	6	6	6	2	4	18	8	10
	SubTotals:	769	615	154	135	96	39	904	711	193
ALL RACES	0-12	0	0	0	0	0	0	0	0	0
	13-19	5	0	5	2	2	0	7	2	5
	20-24	104	41	63	14	1	13	118	42	76
	25-34	713	235	478	113	19	94	826	254	572
	35-44	558	208	350	199	37	162	757	245	512
	45-54	318	107	211	207	34	173	525	141	384
	55-64	226	60	166	102	16	86	328	76	252
	65+	49	7	42	30	2	28	79	9	70
	SubTotals:	1,973	658	1,315	667	111	556	2,640	769	1,871

Clients Served This Period

Unduplicated clients:	2640
Client visits: ³	12170
Spanish speaking (primary language at home) clients served:	482
Deaf/hard of hearing clients served:	15
Blind/sight impaired clients served:	16
Homeless clients served:	167
Transgender M to F clients served:	51
Transgender F to M clients served:	2
Clients served this period who live w/in Harris County:	2561
Clients served this period who live outside Harris County:	79
Active substance abuse clients served:	15
Active psychiatric illness clients served:	25

Methods of Exposure (not mutually exclusive)

Perinatal Transmission	22
Hemophilia Coagulation	1
Transfusion	16
Heterosexual Contact	981
MSM (not IDU)	1336
IV Drug Use (not MSM)	21
MSM/IDU	4
Multiple Exposure Categories	90
Other risk	322
Multi-Race Breakdown	
ASN,WHT	2
BLK,HWN	1
BLK,NTV	9
BLK,WHT	10
NTV,WHT	4

HARRIS COUNTY PUBLIC HEALTH AND ENVIRONMENTAL SERVICES - RWGA
SERVICE UTILIZATION REPORT

CONTROL
 #3

[Agency]: [Grant]: All [Service]: ALL [Service Period]: 0
 Services performed between 3/1/23 and 9/30/23 Type Encounter
 [Age Group]: AgeGrp (expanded) [Include/Exclude subcats]: INCLUDE
 [Contract 1]: 23GEN0416AA [Sub Cats 1]: All [Contract 2]: 23GEN0416HU [Sub Cats 2]: All
 [Contract 3]: 23GEN0416WHT [Sub Cats 3]: All
 [Contract 4]: 23GEN0416DRUG [Sub Cats 4]: All [Contract 5]: 23GEN0416EFINA [Sub Cats 5]: All
 [MHI]: ALL [ShowDetail]: Full [Registration Type]: ALL [NewClientsOnly]: No

RACE	AGE	BIRTH GENDER								
		MALE			FEMALE			BOTH GENDERS		
		Hispanic	Non-Hisp		Hispanic	Non-Hisp		Hispanic	Non-Hisp	
AFRICAN AMERICAN	0-12	0	0	0	0	0	0	0	0	0
	13-19	1	0	1	0	0	0	1	0	1
	20-24	33	1	32	5	0	5	38	1	37
	25-34	293	8	285	46	3	43	339	11	328
	35-44	235	10	225	95	2	93	330	12	318
	45-54	121	7	114	104	1	103	225	8	217
	55-64	74	2	72	48	7	41	122	2	120
	65+	28	1	27	14	6	8	42	1	41
	Sub Totals	785	29	756	317	6	311	1,097	15	1,082
ASIAN	0-12	0	0	0	0	0	0	0	0	0
	13-19	0	0	0	0	0	0	0	0	0
	20-24	0	0	0	0	0	0	0	0	0
	25-34	8	0	8	0	0	0	8	0	8
	35-44	5	0	5	1	0	1	6	0	6
	45-54	5	0	5	0	0	0	5	0	5
	55-64	3	0	3	0	0	0	3	0	3
	65+	0	0	0	0	0	0	0	0	0
	Sub Totals	21	0	21	1	0	1	22	0	22
MULTI-RACE	0-12	0	0	0	0	0	0	0	0	0
	13-19	1	0	1	0	0	0	1	0	1
	20-24	1	0	1	0	0	0	1	0	1
	25-34	8	2	6	2	0	2	10	2	8
	35-44	2	0	2	0	0	0	2	0	2
	45-54	2	0	2	1	1	0	3	1	2
	55-64	2	1	1	0	0	0	2	1	1
	65+	1	0	1	0	0	0	1	0	1
	Sub Totals	17	3	14	3	1	2	20	4	16
NATIVE AMERICAN	0-12	0	0	0	0	0	0	0	0	0
	13-19	0	0	0	0	0	0	0	0	0
	20-24	0	0	0	0	0	0	0	0	0
	25-34	1	0	1	1	0	1	2	0	2
	35-44	1	0	1	1	1	1	2	0	2
	45-54	0	0	0	0	0	0	0	0	0
	55-64	0	0	0	1	0	1	1	0	1
	65+	0	0	0	0	0	0	0	0	0
	Sub Totals	2	0	2	3	1	2	5	0	5
PAC ISLAND HAWAII	0-12	0	0	0	0	0	0	0	0	0
	13-19	0	0	0	0	0	0	0	0	0

RACE	AGE ²	BIRTH GENDER								
		MALE			FEMALE			BOTH GENDERS		
		Hispanic	Non-Hisp		Hispanic	Non-Hisp		Hispanic	Non-Hisp	
PAC.ISLND/HAWAII	20-24	0	0	0	0	0	0	0	0	0
	25-34	0	0	0	0	0	0	0	0	0
	35-44	0	0	0	0	0	0	0	0	0
	45-54	1	0	1	0	0	0	1	0	1
	55-64	0	0	0	0	0	0	0	0	0
	65+	1	0	1	1	0	1	2	0	2
	SubTotals:	2	0	2	1	0	1	3	0	3
WHITE	0-12	0	0	0	0	0	0	0	0	0
	13-19	2	2	0	1	1	0	3	3	0
	20-24	31	30	1	3	2	1	34	32	2
	25-34	220	197	23	17	11	6	237	208	29
	35-44	202	177	25	32	27	5	234	204	30
	45-54	122	92	30	42	26	16	164	118	46
	55-64	74	54	20	15	11	4	89	65	24
	65+	17	10	7	2	1	1	19	11	8
	SubTotals:	668	562	106	112	79	33	780	641	139
ALL RACES	0-12	0	0	0	0	0	0	0	0	0
	13-19	4	2	2	1	1	0	5	3	2
	20-24	65	31	34	8	2	6	73	33	40
	25-34	530	207	323	66	14	52	596	221	375
	35-44	445	187	258	129	29	100	574	216	358
	45-54	251	99	152	147	28	119	398	127	271
	55-64	153	57	96	64	11	53	217	68	149
	65+	47	11	36	17	1	16	64	12	52
	SubTotals:	1,495	594	901	432	86	346	1,927	680	1,247

Clients Served This Period

Unduplicated clients:	1927
Client visits: ³	6395
Spanish speaking (primary language at home) clients served:	447
Deaf/hard of hearing clients served:	8
Blind/sight impaired clients served:	8
Homeless clients served:	109
Transgender M to F clients served:	36
Transgender F to M clients served:	0
Clients served this period who live w/in Harris County:	1899
Clients served this period who live outside Harris County:	28
Active substance abuse clients served:	9
Active psychiatric illness clients served:	16

Methods of Exposure (not mutually exclusive)

Perinatal Transmission	10
Hemophilia Coagulation	1
Transfusion	11
Heterosexual Contact	694
MSM (not IDU)	1029
IV Drug Use (not MSM)	12
MSM/IDU	0
Multiple Exposure Categories	62
Other risk	215
<u>Multi-Race Breakdown</u>	
ASN,WHT	1
BLK,NTV	6
BLK,NTV,WHT	1
BLK,WHT	10
NTV,WHT	2

RACE	AGE ²	BIRTH GENDER								
		MALE			FEMALE			BOTH GENDERS		
		Hispanic	Non-Hisp		Hispanic	Non-Hisp		Hispanic	Non-Hisp	
WHITE	20-24	37	35	2	2	2	0	39	37	2
	25-34	180	168	12	12	10	2	192	178	14
	35-44	161	151	10	29	28	1	190	179	11
	45-54	93	80	13	24	20	4	117	100	17
	55-64	54	41	13	10	9	1	64	50	14
	65+	6	5	1	3	2	1	9	7	2
	SubTotals:	531	480	51	80	71	9	611	551	60
ALL RACES	0-12	0	0	0	0	0	0	0	0	0
	13-19	5	0	5	2	2	0	7	2	5
	20-24	64	38	26	6	2	4	70	40	30
	25-34	458	180	278	55	15	40	513	195	318
	35-44	338	161	177	112	30	82	450	191	259
	45-54	184	84	100	104	24	80	288	108	180
	55-64	109	44	65	42	10	32	151	54	97
	65+	16	6	10	8	2	6	24	8	16
	SubTotals:	1,174	513	661	329	85	244	1,503	598	905

Clients Served This Period

Unduplicated clients:	1503
Client visits: ³	2935
Spanish speaking (primary language at home) clients served:	389
Deaf/hard of hearing clients served:	4
Blind/sight impaired clients served:	4
Homeless clients served:	81
Transgender M to F clients served:	29
Transgender F to M clients served:	0
Clients served this period who live w/in Harris County:	1446
Clients served this period who live outside Harris County:	57
Active substance abuse clients served:	3
Active psychiatric illness clients served:	6

Methods of Exposure (not mutually exclusive)

Perinatal Transmission	12
Hemophilia Congulation	1
Transfusion	10
Heterosexual Contact	535
MSM (not IDU)	815
IV Drug Use (not MSM)	12
MSM/IDU	0
Multiple Exposure Categories	54
Other risk	166
Multi-Race Breakdown	
ASN,WHT	2
BLK,NTV	5
BLK,WHT	8
NTV,WHT	1

FOOTNOTES

¹ Visit = time spent per client per agency per service per day

² Age as of client max service date

³ If New Client = Yes is selected then clients were only included if they had no encounters (for the service, agency, and grant selected) in the twelve months prior to 3/1/2022; encounters (for the service, agency, and grant selected) may or may not have occurred prior to 03/01/21.

[4] Contracts, Subcats, Service Performer, Grants, MAI ignored for SURTypes (Bus Voucher, Ride Share, Ending The Epidemic)

RACE	AGE ²	BIRTH GENDER								
		MALE			FEMALE			BOTH GENDERS		
		Hispanic	Non-Hisp		Hispanic	Non-Hisp		Hispanic	Non-Hisp	
PAC.ISLND/HAWAII	20-24	0	0	0	0	0	0	0	0	0
	25-34	0	0	0	0	0	0	0	0	0
	35-44	0	0	0	0	0	0	0	0	0
	45-54	0	0	0	0	0	0	0	0	0
	55-64	0	0	0	0	0	0	0	0	0
	65+	1	0	1	1	0	1	2	0	2
	SubTotals:	1	0	1	1	0	1	2	0	2
WHITE	0-12	0	0	0	0	0	0	0	0	0
	13-19	2	2	0	1	1	0	3	3	0
	20-24	26	25	1	2	1	1	28	26	2
	25-34	190	181	9	12	8	4	202	189	13
	35-44	170	153	17	28	23	5	198	176	22
	45-54	98	85	13	32	22	10	130	107	23
	55-64	51	42	9	18	13	5	69	55	14
	65+	11	8	3	1	1	0	12	9	3
	SubTotals:	548	496	52	94	69	25	642	565	77
ALL RACES	0-12	0	0	0	0	0	0	0	0	0
	13-19	5	2	3	2	2	0	7	4	3
	20-24	55	26	29	5	1	4	60	27	33
	25-34	458	193	265	63	11	52	521	204	317
	35-44	376	164	212	120	25	95	496	189	307
	45-54	202	88	114	127	24	103	329	112	217
	55-64	114	45	69	60	13	47	174	58	116
	65+	25	9	16	14	1	13	39	10	29
	SubTotals:	1,235	527	708	391	77	314	1,626	604	1,022

Clients Served This Period

Unduplicated clients:	1626
Client visits: ³	4408
Spanish speaking (primary language at home) clients served:	396
Deaf/hard of hearing clients served:	7
Blind/sight impaired clients served:	8
Homeless clients served:	103
Transgender M to F clients served:	33
Transgender F to M clients served:	0
Clients served this period who live w/in Harris County:	1599
Clients served this period who live outside Harris County:	27
Active substance abuse clients served:	6
Active psychiatric illness clients served:	15

Methods of Exposure (not mutually exclusive)

Perinatal Transmission	11
Hemophilia Coagulation	1
Transfusion	10
Heterosexual Contact	602
MSM (not IDU)	861
IV Drug Use (not MSM)	9
MSM/IDU	1
Multiple Exposure Categories	55
Other risk	176

Multi-Race Breakdown

ASN,WHT	1
BLK,NTV	4
BLK,WHT	10
NTV,WHT	3

FOOTNOTES

¹ Visit = time spent per client per agency per service per day

² Age as of client max service date

³ If New Client = Yes is selected then clients were only included if they had no encounters (for the service, agency, and grant selected) in the twelve months prior to 3/1/2023; encounters (for the service, agency, and grant selected) may or may not have occurred prior to 03/01/22.

[4] Contracts, Subcats, Service Performer, Grants, MAL ignored for SURT types (Bus Voucher, Ride Share, Funding The Epidemic)

HARRIS COUNTY PUBLIC HEALTH AND ENVIRONMENTAL SERVICES - RWGA SERVICE UTILIZATION REPORT

[Agency]: ~~PHU~~ [Gran]: All [Service]: ALL [Service Performer]: 0

Services performed between 3/1/23 and 9/30/23 * Type Encounter

[Age Group]: AgeGrp1 (expanded) [Include/Exclude SubCats]: INCLUDE

[Contract 1]: 23GEN0416AANP [Sub Cats 1]: All [Contract 2]: 23GEN0416HLNP [Sub Cats 2]: All

[Contract 3]: 23GEN0416WHITNP [Sub Cats 3]: All

[Contract 4]: 23GEN0416DRUGNP [Sub Cats 4]: All [Contract 5]: 23GEN0416EFINANP [Sub Cats 5]: All

[MAlt]: ALL [ShowDetail]: False [Registration Type]: ALL [NewClientsOnly]: No *

CONTROL
#3
NO PAY

RACE	AGE ¹	BIRTH GENDER									
		MALE			FEMALE			BOTH GENDERS			
		Hispanic	Non-Hisp		Hispanic	Non-Hisp		Hispanic	Non-Hisp		
AFRICAN AMERICAN	0-12	0	0	0	0	0	0	0	0	0	0
	13-19	2	0	2	1	1	0	3	1	2	
	20-24	28	1	27	3	0	3	31	1	30	
	25-34	254	8	246	49	3	46	303	11	292	
	35-44	199	11	188	90	2	88	289	13	276	
	45-54	98	3	95	94	1	93	192	4	188	
	55-64	59	2	57	41	0	41	100	2	98	
	65+	13	1	12	12	0	12	25	1	24	
	SubTotals:	653	26	627	290	7	283	943	33	910	
ASIAN	0-12	0	0	0	0	0	0	0	0	0	
	13-19	0	0	0	0	0	0	0	0	0	
	20-24	0	0	0	0	0	0	0	0	0	
	25-34	6	0	6	0	0	0	6	0	6	
	35-44	3	0	3	1	0	1	4	0	4	
	45-54	4	0	4	0	0	0	4	0	4	
	55-64	2	0	2	0	0	0	2	0	2	
	65+	0	0	0	0	0	0	0	0	0	
	SubTotals:	15	0	15	1	0	1	16	0	16	
MULTI-RACE	0-12	0	0	0	0	0	0	0	0	0	
	13-19	1	0	1	0	0	0	1	0	1	
	20-24	1	0	1	0	0	0	1	0	1	
	25-34	7	4	3	1	0	1	8	4	4	
	35-44	3	0	3	0	0	0	3	0	3	
	45-54	2	0	2	1	1	0	3	1	2	
	55-64	2	1	1	0	0	0	2	1	1	
	65+	0	0	0	0	0	0	0	0	0	
	SubTotals:	16	5	11	2	1	1	18	6	12	
NATIVE AMERICAN	0-12	0	0	0	0	0	0	0	0	0	
	13-19	0	0	0	0	0	0	0	0	0	
	20-24	0	0	0	0	0	0	0	0	0	
	25-34	1	0	1	1	0	1	2	0	2	
	35-44	1	0	1	1	0	1	2	0	2	
	45-54	0	0	0	0	0	0	0	0	0	
	55-64	0	0	0	1	0	1	1	0	1	
	65+	0	0	0	0	0	0	0	0	0	
	SubTotals:	2	0	2	3	0	3	5	0	5	
PAC ISLAND/HAWAII	0-12	0	0	0	0	0	0	0	0	0	
	13-19	0	0	0	0	0	0	0	0	0	

RACE	AGE ²	BIRTH GENDER								
		MALE			FEMALE			BOTH GENDERS		
		Hispanic	Non-Hisp		Hispanic	Non-Hisp		Hispanic	Non-Hisp	
PAC.ISLND/HAWAII	20-24	0	0	0	0	0	0	0	0	0
	25-34	0	0	0	0	0	0	0	0	0
	35-44	0	0	0	0	0	0	0	0	0
	45-54	0	0	0	0	0	0	0	0	0
	55-64	0	0	0	0	0	0	0	0	0
	65+	1	0	1	1	0	1	2	0	2
	SubTotals:	1	0	1	1	0	1	2	0	2
WHITE	0-12	0	0	0	0	0	0	0	0	0
	13-19	2	2	0	1	1	0	3	3	0
	20-24	26	25	1	2	1	1	28	26	2
	25-34	190	181	9	12	8	4	202	189	13
	35-44	170	153	17	28	23	5	198	176	22
	45-54	98	85	13	32	22	10	130	107	23
	55-64	51	42	9	18	13	5	69	55	14
	65+	11	8	3	1	1	0	12	9	3
	SubTotals:	548	496	52	94	69	25	642	565	77
ALL RACES	0-12	0	0	0	0	0	0	0	0	0
	13-19	5	2	3	2	2	0	7	4	3
	20-24	55	26	29	5	1	4	60	27	33
	25-34	458	193	265	63	11	52	521	204	317
	35-44	376	164	212	120	25	95	496	189	307
	45-54	202	88	114	127	24	103	329	112	217
	55-64	114	45	69	60	13	47	174	58	116
	65+	25	9	16	14	1	13	39	10	29
	SubTotals:	1,235	527	708	391	77	314	1,626	604	1,022

Clients Served This Period

Unduplicated clients:	1626
Client visits: ³	4408
Spanish speaking (primary language at home) clients served:	396
Deaf/hard of hearing clients served:	7
Blind/sight impaired clients served:	8
Homeless clients served:	103
Transgender M to F clients served:	33
Transgender F to M clients served:	0
Clients served this period who live w/in Harris County:	1599
Clients served this period who live outside Harris County:	27
Active substance abuse clients served:	6
Active psychiatric illness clients served:	15

Methods of Exposure (not mutually exclusive)

Perinatal Transmission	11
Hemophilia Coagulation	1
Transfusion	10
Heterosexual Contact	602
MSM (not IDU)	861
IV Drug Use (not MSM)	9
MSM/IDU	1
Multiple Exposure Categories	55
Other risk	176
Multi-Race Breakdown	
ASN,WHT	1
BLK,NTV	4
BLK,WHT	10
NTV,WHT	3

FOOTNOTES

- ¹ Visit = time spent per client per agency per service per day
- ² Age as of client max service date
- ³ If New Client = Yes is selected then clients were only included if they had no encounters (for the service, agency, and grant selected) in the twelve months prior to 3/1/2023; encounters (for the service, agency, and grant selected) may or may not have occurred prior to 03/01/22.
- [4] Contracts, Subcats, Service Performer, Grants, MAI ignored for SURT types (Bus Voucher, Ride Share, Funding The Epidemic)

Request for Service Category Increase
Ryan White Part A and MAI

A.	Name of Agency (not provided to RWPC)						
B.	Contract Number (not provided to RWPC)						
C.	Service Category Title (per RFP)	Health Insurance Premium & Cost Sharing Assistance	Control No.	4			
D.	Request for Increase under (check one):	Part A: X	or	MAI:			
	Request Period (check one):	April:	August:	Oct: X	Final Qtr:		
E.	Amount of additional funding Requested:	\$1,130,000.00					
F.	Unit of Service: (list only those units and disbursements where an increase is requested)	a. Number of units in current contract:	b. Cost/unit	c. Number of additional units requested:	d. Total: (b x c)		
	1. Insurance Units	6425.1273	\$30.00	15233	\$456,990.00		
	2.				\$0.00		
	3.				\$0.00		
	4.				\$0.00		
	5.				\$0.00		
	6.				\$0.00		
	7.				\$0.00		
	8. Transactions (list current amount in column a. and requested amount in column c.)	\$1,892,759.18	N/A	\$673,010.00	\$673,010.00		
	9. Total additional funding (must match E. above):					\$1,130,000.00	
G.	Number of new/additional clients to be served with requested increase.						
H.	Number of clients served under current contract - Agencies must use the CPCDMS to document numbers served. De-identified CPCDMS-generated reports will be provided to the RWPC by RWGA.	a. Number of clients served per CPCDMS	b. Percent AA (non-Hispanic)	c. Percent White (non-Hispanic)	d. Percent Hispanic (all races)	e. Percent Male	f. Percent Female
	1. Number of clients that received this service under Part A (or MAI) in FY 2022.* (March 1, 2022 - February 28, 2023) *If agency was funded for service under Part A (or MAI) in FY 2022 - if not, mark these cells as "NA"	1776	42%	25%	33%	81%	19%
	2. Number of clients that have received this service under Part A (or MAI) in FY 2023. a. April Request Period = Not Applicable b. August Request Period = 03/01/23 - 06/30/23 c. October Request Period = 03/01/23 - 09/30/23 d. 4th Qtr. Request Period = 03/01/23 - 11/30/23	1815	42%	25%	33%	81%	19%

Request for Service Category Increase
Ryan White Part A and MAI

I.	Additional Information Provided by Requesting Agency (subject to audit by RWGA). Answer all questions that are applicable to agency's current situation.	a. Enter Number of Weeks in this column	b. How many Weeks will this be if full amount of request is received?	c. Comments (do not include agency name or identifying information):	
	1. Length of waiting time (in weeks) for an appointment for a new client:	4	3	The agency has a large number of Ryan White patients seeking services referenced in this Request for Service Category Increase Form. The agency is requesting funding in order to sufficiently meet the continued demands for new Ryan White patients.	
	2. Length of waiting time (in weeks) for an appointment for a current client:	3	2	The agency has a large number of Ryan White patients seeking services referenced in this Request for Service Category Increase Form. The agency is requesting funding in order to sufficiently meet the continued demands for existing Ryan White patients.	
	3. Number of clients on a "waiting list" for services (per Part A SOC):	0	0	The agency does not maintain a waiting list. The agency offers a limited number of same day appointment slots for patients.	
	3. Number of clients unable to access services monthly (number unable to make an appointment) (per Part A SOC):	0	0	The agency offers a limited number of same day appointment slots for patients.	
J.	List all other sources and amounts of funding for similar services currently in place with agency:	a. Funding Source:	b. End Date of Contract:	c. Amount	d. Comment (50 words or less):
	1. DSHS State Services	The Resource Group	8/31/24	\$892,101	
	2. Ryan White Part B	The Resource Group	3/31/24	\$1,028,433	
	3. HINS Units & Transactions	RWA	2/28/24	\$797,947	Back bill @ 08/31/23; Units \$152,070; Transactions \$645,877
	4.				
K.	Submit the following documentation at the same time as the request (budget narrative and fee-for-service budgets may be hard copy or fax):				
	Revised Budget Narrative (Table I.A.) corresponding to the revised contract total (amount in Item F.9.d. plus current contract amount).				
	This form must be submitted electronically via email by published deadline to Glenn Urbach: glenn.urbach@phs.hctx.net				

CONTROL #4

HARRIS COUNTY PUBLIC HEALTH AND ENVIRONMENTAL SERVICES - RWGA
SERVICE UTILIZATION REPORT

[Agency] ██████ [Grant] All [Service] ALL [service Performer] All
 Services performed between 3/1/12 and 2/28/17 Type Encounter
 [Age Group] AgeGrpt (expanded) [Include/Exclude Non-Cats] INCLUDE
 [Contract 1] 22GFN0498 [Sub-Cats 1] All [Contract 2] 22GFN0498NP [Sub-Cats 2] All
 [Contract 3] n/a [Sub-Cats 3] All
 [Contract 4] n/a [Sub-Cats 4] All [Contract 5] n/a [Sub-Cats 5] All
 [MHI] ALL [ShowDetail] False [Reasons for Type] ALL [NewClientOnly] No

RACE	AGE	BIRTH GENDER									
		MALE			FEMALE			BOTH GENDERS			
		Hispanic	Non-Hisp		Hispanic	Non-Hisp		Hispanic	Non-Hisp		
AFRICAN AMERICAN	0-12	0	0	0	0	0	0	0	0	0	0
	13-19	1	0	1	0	0	0	1	0	1	
	20-24	13	1	17	1	0	1	14	1	17	
	25-34	104	2	102	23	0	23	127	2	125	
	35-44	120	5	115	81	2	83	171	7	184	
	45-54	102	3	98	69	0	69	171	4	177	
	55-64	133	1	132	69	0	69	202	1	201	
	65+	49	1	48	33	0	33	82	1	81	
	Sub Totals:	522	14	508	246	2	244	768	16	752	
ASIAN	0-12	0	0	0	0	0	0	0	0	0	
	13-19	0	0	0	0	0	0	0	0	0	
	20-24	2	0	2	0	0	0	2	0	2	
	25-34	12	0	12	0	0	0	12	0	12	
	35-44	7	0	7	2	0	2	9	0	9	
	45-54	9	0	9	1	0	1	10	0	10	
	55-64	5	0	5	0	0	0	5	0	5	
	65+	3	0	3	1	0	1	4	0	4	
	Sub Totals:	38	0	38	4	0	4	42	0	42	
MULTI-RACE	0-12	0	2	0	0	1	0	0	0	0	
	13-19	0	0	0	0	0	0	0	0	0	
	20-24	0	0	0	0	0	0	0	0	0	
	25-34	4	2	2	4	0	4	5	2	5	
	35-44	3	1	2	0	0	0	3	1	2	
	45-54	3	1	2	0	0	0	3	0	2	
	55-64	1	0	1	0	0	0	1	0	1	
	65+	1	0	1	0	0	0	1	0	1	
	Sub Totals:	12	4	8	4	0	4	13	2	9	
NATIVE AMERICAN	0-12	0	0	0	0	0	0	0	0	0	
	13-19	0	0	0	0	0	0	0	0	0	
	20-24	0	0	0	0	0	0	0	0	0	
	25-34	0	0	0	0	0	0	0	0	0	
	35-44	0	0	0	0	0	0	0	0	0	
	45-54	1	0	1	1	0	0	2	0	1	
	55-64	1	0	1	1	1	0	2	0	1	
	65+	0	0	0	0	0	0	0	0	0	
	Sub Totals:	2	0	2	2	1	0	4	0	2	
PAC ISLAND HAWAII	0-17	0	0	0	0	0	0	0	0	0	
	17-19	0	0	0	0	0	0	0	0	0	

RACE	AGE ²	BIRTH GENDER								
		MALE			FEMALE			BOTH GENDERS		
		Hispanic	Non-Hisp		Hispanic	Non-Hisp		Hispanic	Non-Hisp	
PAC.ISLND/HAWAII	20-24	0	0	0	0	0	0	0	0	0
	25-34	0	0	0	0	0	0	0	0	0
	35-44	0	0	0	0	0	0	0	0	0
	45-54	1	0	1	0	0	0	1	0	1
	55-64	2	1	1	0	0	0	2	1	1
	65+	0	0	0	0	0	0	0	0	0
	SubTotals:	3	1	2	0	0	0	3	1	2
WHITE	0-12	0	0	0	0	0	0	0	0	0
	13-19	0	0	0	0	0	0	0	0	0
	20-24	11	10	1	0	0	0	11	10	1
	25-34	117	85	32	1	0	1	118	85	33
	35-44	138	96	42	14	11	3	152	107	45
	45-54	207	118	89	20	14	6	227	132	95
	55-64	235	100	135	28	14	14	263	114	149
	65+	156	42	114	19	11	8	175	53	122
	SubTotals:	864	451	413	82	50	32	946	501	445
ALL RACES	0-12	0	0	0	0	0	0	0	0	0
	13-19	1	0	1	0	0	0	1	0	1
	20-24	26	11	15	1	0	1	27	11	16
	25-34	237	89	148	25	0	25	262	89	173
	35-44	268	102	166	67	13	54	335	115	220
	45-54	323	123	200	91	15	76	414	138	276
	55-64	377	102	275	98	15	83	475	117	358
	65+	209	43	166	53	11	42	262	54	208
	SubTotals:	1,441	470	971	335	54	281	1,776	524	1,252

Clients Served This Period

Unduplicated clients:	1776
Client visits: ³	13060
Spanish speaking (primary language at home) clients served:	174
Deaf/hard of hearing clients served:	11
Blind/sight impaired clients served:	12
Homeless clients served:	83
Transgender M to F clients served:	34
Transgender F to M clients served:	1
Clients served this period who live w/in Harris County:	1558
Clients served this period who live outside Harris County:	218
Active substance abuse clients served:	2
Active psychiatric illness clients served:	13

Methods of Exposure (not mutually exclusive)

Perinatal Transmission	10
Hemophilia Coagulation	1
Transfusion	12
Heterosexual Contact	384
MSM (not IDU)	820
IV Drug Use (not MSM)	23
MSM/IDU	6
Multiple Exposure Categories	45
Other risk	492
Multi-Race Breakdown	
ASN,WHT	1
BLK,NTV	2
BLK,NTV,WHT	1
BLK,WHT	6
HWN,WHT	1
NTV,WHT	2

RACE	AGE ²	BIRTH GENDER								
		MALE			FEMALE			BOTH GENDERS		
		Hispanic	Non-Hisp		Hispanic	Non-Hisp		Hispanic	Non-Hisp	
PAC.ISLND/HAWAII	20-24	0	0	0	0	0	0	0	0	0
	25-34	0	0	0	0	0	0	0	0	0
	35-44	0	0	0	0	0	0	0	0	0
	45-54	1	0	1	0	0	0	1	0	1
	55-64	1	0	1	0	0	0	1	0	1
	65+	0	0	0	0	0	0	0	0	0
	SubTotals:	2	0	2	0	0	0	2	0	2
WHITE	0-12	0	0	0	0	0	0	0	0	0
	13-19	0	0	0	0	0	0	0	0	0
	20-24	13	9	4	1	1	0	14	10	4
	25-34	99	65	34	2	1	1	101	66	35
	35-44	149	100	49	13	11	2	162	111	51
	45-54	198	120	78	18	13	5	216	133	83
	55-64	246	117	129	31	21	10	277	138	139
	65+	181	44	137	16	9	7	197	53	144
	SubTotals:	886	455	431	81	56	25	967	511	456
ALL RACES	0-12	0	0	0	0	0	0	0	0	0
	13-19	0	0	0	1	0	1	1	0	1
	20-24	31	10	21	2	1	1	33	11	22
	25-34	217	68	149	14	1	13	231	69	162
	35-44	277	106	171	60	13	47	337	119	218
	45-54	303	126	177	110	17	93	413	143	270
	55-64	395	117	278	99	21	78	494	138	356
	65+	248	47	201	58	9	49	306	56	250
	SubTotals:	1,471	474	997	344	62	282	1,815	536	1,279

Clients Served This Period

Unduplicated clients:	1815
Client visits: ³	12291
Spanish speaking (primary language at home) clients served:	197
Deaf/hard of hearing clients served:	15
Blind/sight impaired clients served:	19
Homeless clients served:	74
Transgender M to F clients served:	29
Transgender F to M clients served:	1
Clients served this period who live w/in Harris County:	1584
Clients served this period who live outside Harris County:	231
Active substance abuse clients served:	2
Active psychiatric illness clients served:	18

Methods of Exposure (not mutually exclusive)

Perinatal Transmission	11
Hemophilia Coagulation	2
Transfusion	13
Heterosexual Contact	402
MSM (not IDU)	816
IV Drug Use (not MSM)	21
MSM/IDU	3
Multiple Exposure Categories	44
Other risk	523

Multi-Race Breakdown

ASN,WHT	1
BLK,NTV	4
BLK,WHf	5
HWN,WHT	1
NTV,WHf	2

Request for Service Category Increase
Ryan White Part A and MAI

A.	Name of Agency (not provided to RWPC)						
B.	Contract Number (not provided to RWPC)						
C.	Service Category Title (per RFP)	Medical Nutritional Therapy & Nutritional Supplements	Control No.	5			
D.	Request for Increase under (check one):	Part A: X	or	MAI:			
	Request Period (check one):	April:	August:	Oct: X	Final Qtr:		
E.	Amount of additional funding Requested:	\$79,000.00					
F.	Unit of Service: (list only those units and disbursements where an increase is requested)	a. Number of units in <u>current</u> contract:	b. Cost/unit	c. Number of <u>additional</u> units requested:	d. Total: (b x c)		
	1. Counseling	877.8729	\$70.00	43	\$3,000.00		
	2.				\$0.00		
	3.				\$0.00		
	4.				\$0.00		
	5.				\$0.00		
	6.				\$0.00		
	7.				\$0.00		
	8. Supplements (list current amount in column a. and requested amount in column c.)	\$228,734.65	N/A	\$76,000.00	\$76,000.00		
	9. Total additional funding (must match E. above):					\$79,000.00	
G.	Number of new/additional clients to be served with requested increase.						
H.	Number of clients served under current contract - Agencies must use the CPCDMS to document numbers served. De-identified CPCDMS-generated reports will be provided to the RWPC by RWGA.	a. Number of clients served per CPCDMS	b. Percent AA (non-Hispanic)	c. Percent White (non-Hispanic)	d. Percent Hispanic (all races)	e. Percent Male	f. Percent Female
	1. Number of clients that received this service under Part A (or MAI) in FY 2022.* (March 1, 2022 - February 28, 2023) *If agency was funded for service under Part A (or MAI) in FY 2022 - if not, mark these cells as "NA"	505	44%	19%	37%	78%	22%
	2. Number of clients that have received this service under Part A (or MAI) in FY 2023. a. April Request Period = Not Applicable b. August Request Period = 03/01/23 - 06/30/23 c. October Request Period = 03/01/23 - 09/30/23 d. 4th Qtr. Request Period = 03/01/23 - 11/30/23	417	44%	18%	38%	77%	23%

Request for Service Category Increase
Ryan White Part A and MAI

I.	Additional Information Provided by Requesting Agency (subject to audit by RWGA). Answer all questions that are applicable to agency's current situation.	a. Enter Number of Weeks in this column	b. How many Weeks will this be if full amount of request is received?	c. Comments (do not include agency name or identifying information):	
	1. Length of waiting time (in weeks) for an appointment for a new client:	4	3	The agency has a large number of Ryan White patients seeking services referenced in this Request for Service Category Increase Form. The agency is requesting funding in order to sufficiently meet the continued demands for new Ryan White patients.	
	2. Length of waiting time (in weeks) for an appointment for a current client:	3	2	The agency has a large number of Ryan White patients seeking services referenced in this Request for Service Category Increase Form. The agency is requesting funding in order to sufficiently meet the continued demands for existing Ryan White patients.	
	3. Number of clients on a "waiting list" for services (per Part A SOC):	0	0	The agency does not maintain a waiting list. The agency offers a limited number of same day appointment slots for patients.	
	3. Number of clients unable to access services monthly (number unable to make an appointment) (per Part A SOC):	0	0	The agency offers a limited number of same day appointment slots for patients.	
J.	List all other sources and amounts of funding for similar services currently in place with agency:	a. Funding Source:	b. End Date of Contract:	c. Amount	d. Comment (50 words or less):
	1.				
	2.				
	3.				
	4.				
K.	Submit the following documentation at the same time as the request (budget narrative and fee-for-service budgets may be hard copy or fax):				
	Revised Budget Narrative (Table I.A.) corresponding to the revised contract total (amount in Item F.9.d. plus current contract amount).				
	This form must be submitted electronically via email by published deadline to Glenn Urbach: glenn.urbach@phs.hctx.net				

CONTROL #5

HARRIS COUNTY PUBLIC HEALTH AND ENVIRONMENTAL SERVICES - RWGA
SERVICE UTILIZATION REPORT

[Agency] [Grant] All [Service] ALL [Service Preference] 0
services performed between 1/1/22 and 2/28/23 Type Encounter
[Age Group] AgeGrp [Expanded] [Include/Exclude Subcat] INCLUDE
[Contract 1] 22GEN0499 [Sub Cats 1] All [Contract 2] 22GEN0499NP [Sub Cats 2] All
[Contract 3] n/a [Sub Cats 3] All
[Contract 4] n/a [Sub Cats 4] All [Contract 5] n/a [Sub Cats 5] All
[MAI] ALL [ShowDetail] False [Registration Type] ALL [New/returnOnly] No

RACE	AGE	BIRTH GENDER								
		MALE		FEMALE		BOTH GENDERS				
		Hispanic	Non-Hisp	Hispanic	Non-Hisp	Hispanic	Non-Hisp			
AFRICAN AMERICAN	0-12	0	0	0	0	0	0	0	0	0
	13-19	1	0	1	0	0	2	1	0	1
	20-24	2	0	2	0	0	2	0	0	2
	25-34	14	0	14	3	0	17	0	0	17
	35-44	33	1	32	13	0	46	2	0	44
	45-54	23	0	23	29	2	52	0	0	48
	55-64	50	0	50	28	1	78	0	0	78
	65+	18	0	18	12	0	30	0	0	30
	Sub Totals:	141	2	139	66	3	137	2	0	135
ASIAN	0-12	0	0	0	0	0	0	0	0	0
	13-19	0	0	0	0	0	0	0	0	0
	20-24	0	0	0	0	0	0	0	0	0
	25-34	1	0	1	0	0	1	0	0	1
	35-44	2	0	2	0	0	2	0	0	2
	45-54	5	0	5	3	0	8	0	0	8
	55-64	1	0	1	0	0	1	0	0	1
	65+	2	0	2	0	0	2	0	0	2
	Sub Totals:	11	0	11	3	0	14	0	0	14
MULTI-RACE	0-12	0	0	0	0	0	0	0	0	0
	13-19	0	0	0	0	0	0	0	0	0
	20-24	0	0	0	0	0	0	0	0	0
	25-34	1	1	0	0	0	1	1	0	0
	35-44	0	0	0	0	0	0	0	0	0
	45-54	2	1	1	1	0	3	1	0	1
	55-64	0	0	0	0	0	0	0	0	0
	65+	0	0	0	0	0	0	0	0	0
	Sub Totals:	3	2	1	1	0	4	2	0	1
NATIVE AMERICAN	0-12	0	0	0	0	0	0	0	0	0
	13-19	0	0	0	0	0	0	0	0	0
	20-24	0	0	0	0	0	0	0	0	0
	25-34	0	0	0	0	0	0	0	0	0
	35-44	0	0	0	0	0	0	0	0	0
	45-54	0	0	0	0	0	0	0	0	0
	55-64	1	0	1	0	0	1	0	0	1
	65+	2	0	2	0	0	2	0	0	2
	Sub Totals:	3	0	3	0	0	3	0	0	3
WHITE	0-12	0	0	0	0	0	0	0	0	0
	13-19	0	0	0	0	0	0	0	0	0

RACE	AGE ²	BIRTH GENDER								
		MALE			FEMALE			BOTH GENDERS		
		Hispanic	Non-Hisp		Hispanic	Non-Hisp		Hispanic	Non-Hisp	
WHITE	20-24	2	2	0	0	0	0	2	2	0
	25-34	23	21	2	1	1	0	24	22	2
	35-44	43	29	14	2	1	1	45	30	15
	45-54	58	38	20	8	4	4	66	42	24
	55-64	71	44	27	7	5	2	78	49	29
	65+	37	13	24	5	3	2	42	16	26
	SubTotals:		234	147	87	23	14	9	257	161
ALL RACES	0-12	0	0	0	0	0	0	0	0	0
	13-19	1	0	1	0	0	0	1	0	1
	20-24	4	2	2	0	0	0	4	2	2
	25-34	39	22	17	4	1	3	43	23	20
	35-44	78	30	48	15	2	13	93	32	61
	45-54	88	40	48	41	8	33	129	48	81
	55-64	123	44	79	35	6	29	158	50	108
	65+	59	15	44	18	3	15	77	18	59
	SubTotals:		392	153	239	113	20	93	505	173

Clients Served This Period

Unduplicated clients:	505
Client visits: ³	1257
Spanish speaking (primary language at home) clients served:	86
Deaf/hard of hearing clients served:	12
Blind/sight impaired clients served:	11
Homeless clients served:	37
Transgender M to F clients served:	9
Transgender F to M clients served:	0
Clients served this period who live w/in Harris County:	466
Clients served this period who live outside Harris County:	39
Active substance abuse clients served:	4
Active psychiatric illness clients served:	6

Methods of Exposure (not mutually exclusive)

PerinatalTransmission	2
Hemophilia Coagulation	0
Transfusion	4
Heterosexual Contact	131
MSM (not IDU)	191
IV Drug Use (not MSM)	7
MSM/IDU	2
Multiple Exposure Categories	14
Other risk	152
<u>Multi-Race Breakdown</u>	
ASN,WHT	1
BLK,NTV	1
BLK,WHT	2

FOOTNOTES

¹ Visit = time spent per client per agency per service per day

² Age as of client max service date

³ If New Client = Yes is selected then clients were only included if they had no encounters (for the service, agency, and grant selected) in the twelve months prior to 3/1/2022; encounters (for the service, agency, and grant selected) may or may not have occurred prior to 03/01/21.

[4] Contracts, Subcats, Service Performer, Grants, MAI ignored for SURTypes (Bus Voucher, Ride Share, Ending The Epidemic)

CONTROL #5

HARRIS COUNTY PUBLIC HEALTH AND ENVIRONMENTAL SERVICES - RWGA
SERVICE UTILIZATION REPORT

[Agency] 00000 [Grant] All - Service | ALL [Service Parameter] 0
 Services performed between: 1/22 and 9/30/21 Type Encounter:
 [Age Group] AgeGrp1 (expanded) [Include Exclude Subjects] INCLUDE
 [Contract 1] 23GEN0366 [Sub Care 1] All [Contract 2] 23GEN0366NP [Sub Care 2] All
 [Contract 3] n/a [Sub Care 3] All
 [Contract 4] n/a [Sub Care 4] All [Contract 5] n/a [Sub Care 5] All
 [MVA] ALL [Show Detail] False [Registration Type] ALL [Show Demographics] No

BIRTH GENDER

RACE	AGE ¹	MALE		FEMALE		BOTH GENDERS	
		Hispanic	Non-Hisp	Hispanic	Non-Hisp	Hispanic	Non-Hisp
AFRICAN AMERICAN	0-12	0	0	0	0	0	0
	13-19	1	0	0	0	1	0
	20-24	1	0	1	0	2	0
	25-34	13	0	2	0	15	0
	35-44	14	1	10	1	24	1
	45-54	22	1	16	1	38	1
	55-64	43	0	26	1	69	1
	65+	23	0	17	0	40	0
	SubTotals:	117	2	72	3	189	5
ASIAN	0-12	0	0	0	0	0	0
	13-19	0	0	0	0	0	0
	20-24	0	0	0	0	0	0
	25-34	1	0	0	0	1	0
	35-44	1	0	0	0	1	0
	45-54	4	0	2	0	6	0
	55-64	1	0	0	0	1	0
	65+	3	0	0	0	3	0
	SubTotals:	10	0	2	0	12	0
MULTI-RACE	0-12	0	0	0	0	0	0
	13-19	0	0	0	0	0	0
	20-24	0	0	0	0	0	0
	25-34	0	0	0	0	0	0
	35-44	0	0	0	0	0	0
	45-54	2	1	1	0	3	1
	55-64	0	0	0	0	0	0
	65+	0	0	0	0	0	0
	SubTotals:	2	1	1	0	3	1
NATIVE AMERICAN	0-12	0	0	0	0	0	0
	13-19	0	0	0	0	0	0
	20-24	0	0	0	0	0	0
	25-34	0	0	0	0	0	0
	35-44	0	0	0	0	0	0
	45-54	0	0	0	0	0	0
	55-64	1	0	0	0	1	0
	65+	2	0	0	0	2	0
	SubTotals:	3	0	0	0	3	0
WHITE	0-12	0	0	0	0	0	0
	13-19	0	0	0	0	0	0

RACE	AGE ²	BIRTH GENDER								
		MALE			FEMALE			BOTH GENDERS		
		Hispanic	Non-Hisp		Hispanic	Non-Hisp		Hispanic	Non-Hisp	
WHITE	20-24	2	2	0	0	0	0	2	2	0
	25-34	13	11	2	1	1	0	14	12	2
	35-44	25	13	12	3	3	0	28	16	12
	45-54	47	32	15	5	4	1	52	36	16
	55-64	72	47	25	6	4	2	78	51	27
	65+	31	14	17	5	4	1	36	18	18
	SubTotals:		190	119	71	20	16	4	210	135
ALL RACES	0-12	0	0	0	0	0	0	0	0	0
	13-19	1	0	1	0	0	0	1	0	1
	20-24	3	2	1	1	0	1	4	2	2
	25-34	27	11	16	3	1	2	30	12	18
	35-44	40	14	26	13	4	9	53	18	35
	45-54	75	34	41	24	6	18	99	40	59
	55-64	117	47	70	32	5	27	149	52	97
	65+	59	16	43	22	4	18	81	20	61
SubTotals:		322	124	198	95	20	75	417	144	273

Clients Served This Period

Unduplicated clients:	417
Client visits: ³	726
Spanish speaking (primary language at home) clients served:	81
Deaf/hard of hearing clients served:	8
Blind/sight impaired clients served:	5
Homeless clients served:	22
Transgender M to F clients served:	7
Transgender F to M clients served:	0
Clients served this period who live w/in Harris County:	391
Clients served this period who live outside Harris County:	26
Active substance abuse clients served:	2
Active psychiatric illness clients served:	9

Methods of Exposure (not mutually exclusive)

PerinatalTransmission	1
Hemophilia Coagulation	0
Transfusion	3
Heterosexual Contact	103
MSM (not IDU)	159
IV Drug Use (not MSM)	7
MSM/IDU	1
Multiple Exposure Categories	11
Other risk	128
<u>Multi-Race Breakdown</u>	
ASN,WHT	1
BLK,NTV	1
BLK,WHT	1

FOOTNOTES

- ¹ Visit = time spent per client per agency per service per day
- ² Age as of client max service date
- ³ If New Client = Yes is selected then clients were only included if they had no encounters (for the service, agency, and grant selected) in the twelve months prior to 3/1/2023; encounters (for the service, agency, and grant selected) may or may not have occurred prior to 03/01/22.
- [4] Contracts, Subcats, Service Performer, Grants, MA] ignored for SURTypes (Bus Voucher, Ride Share, Ending The Epidemic)

MOTIONS WHICH ARE USUALLY MADE AT THE NOVEMBER PRIORITIES AND ALLOCATIONS COMMITTEE MEETING

The following is proposed, updated language using text that was approved in November 2021

PROPOSED LANGUAGE:

THIS MOTION MAY NOT BE NEEDED IN 2023:

Item: Ryan White Part A - FY 2023 Carryover Funds

Recommended Action: Motion: If there are FY 2023 Ryan White Part A carryover funds, it is the intent of the committee to recommend allocating the full amount to Outpatient/Ambulatory Primary Medical Care.

Item: FY 2023 Unspent Funds

Recommended Action: Motion: In the final quarter of the FY 2023 Ryan White Part A, Part B and State Services grant years, after implementing the year end Council-approved reallocation of unspent funds and utilizing the existing 10% reallocation rule to the extent feasible, Ryan White Grant Administration (RWGA) may reallocate any remaining unspent funds as necessary to ensure the Houston EMA has less than 5% unspent Formula funds and no unspent Supplemental funds. The Resource Group (TRG) may reallocate any remaining unspent funds as necessary to ensure no funds are returned to the Texas Department of State Health Services. RWGA and TRG must inform the Council of these shifts no later than the next scheduled Ryan White Planning Council Steering Committee meeting.

2023 QUARTERLY REPORT
PRIORITY AND ALLOCATIONS COMMITTEE
(Submitted October 2023)

Status of Committee Goals and Responsibilities (* means mandated by HRSA):

1. Conduct training to familiarize committee members with decision-making tools.
Status: **DONE**
2. Review the final quarter allocations made by the administrative agents.
Status: **IN PROGRESS**
3. *Improve the processes for and strengthen accountability in the FY 2024 priority-setting, allocations and subcategory allocations processes for Ryan White Parts A and B and State Services funding.
Status: **ONGOING**
4. When applicable, plan for specialty dollars like Minority AIDS Initiative (MAI) and special populations such as Women, Infants, Children and Youth (WICY) throughout the priority setting and allocation processes.
Status: **DONE**
5. *Determine the FY 2024 priorities, allocations and subcategory allocations for Ryan White Parts A and B and State Services funding.
Status: **COMPLETED**
6. *Review the FY 2023 priorities as needed.
Status: **ONGOING - COMPLETED**
7. *Review the FY 2023 allocations as needed.
Status: **ONGOING - COMPLETED**
8. Evaluate the processes used.
Status: **AS NEEDED**
9. Annually, review the status of Committee activities identified in the current Comprehensive Plan.
Status: **IN PROGRESS**

Status of Tasks on the Timeline:

RSC

Committee Chairperson

10/26/2023

Date

Operations Committee Report

**Members Eligible to Run for
Chair of the
2024 Ryan White Planning Council**
(as of 10-20-23)

According to Council Policy 500.01 regarding election of officers: “Ryan White Part A, B and State Services funded providers/employees/subcontractors/Board Members and/or employees/subcontractors of the Grantees for these entities shall not be eligible to run for office of Chair of the Ryan White Planning Council. Candidates will have served as an appointed member of the RWPC for the preceding twelve (12) months and, if needed, have been reappointed by the CEO. One of the three officers must be a self-identified HIV positive person. “Nominations for all three positions: Council Chair, Vice Chair and Secretary, must be submitted to the Director of the Office of Support before the end of the November Steering Committee or at the December Council meeting, which is the day of the election.

Eligible To Run for Chair (* must be reappointed):

Not Eligible To Run for Chair

Servando Arellano	Kevin Aloysius (Legacy Community Health)*
Skeet Boyle	Titan Capri* (contractor with the Office of Support)*
Caleb Brown	Megan Rowe (City of Houston)
Johanna Castillo	Shital Patel -conflicted (Harris Health System)*
Tony Crawford	Oscar Perez -conflicted (Avenue 360)*
Evelio Salinas Escamilla*	Imran Shaikh -conflicted (City of Houston)
Kathryn Fergus	Steven Vargas (contractor with the Office of Support)*
Kenia Gallardo	
Peta-gay Ledbetter	
Cecilia Ligons*	
Josh Mica	
Rodney Mills	
Diana Morgan	
Allen Murray	
Tana Pradia*	
Paul Richards	
Pete Rodriguez	
Ryan Rose	
Evelio Salinas Escamilla	
Robert Sliepka	
Carol Suazo	
Crystal Starr	

SLATE OF NOMINEES

As of Thursday, October 19, 2023, the following people have been nominated and accepted the nomination to run for an officer position on the 2024 Ryan White Planning Council:

Chair:

Skeet Boyle

Crystal Starr

Vice Chair:

Skeet Boyle

Ryan Rose

Secretary:

Skeet Boyle

Ryan Rose